



SZABO SCANDIC

Part of Europa Biosite

Produktinformation



Forschungsprodukte & Biochemikalien



Zellkultur & Verbrauchsmaterial



Diagnostik & molekulare Diagnostik



Laborgeräte & Service

Weitere Information auf den folgenden Seiten!
See the following pages for more information!



Lieferung & Zahlungsart

siehe unsere [Liefer- und Versandbedingungen](#)

Zuschläge

- Mindermengenzuschlag
- Trockeneiszuschlag
- Gefahrgutzuschlag
- Expressversand

SZABO-SCANDIC HandelsgmbH

Quellenstraße 110, A-1100 Wien

T. +43(0)1 489 3961-0

F. +43(0)1 489 3961-7

mail@szabo-scandic.com

www.szabo-scandic.com

[linkedin.com/company/szaboscandic](https://www.linkedin.com/company/szaboscandic) 

CBR1 purified MaxPab mouse polyclonal antibody (B01P) MaxPab®

Catalog # : H00000873-B01P

規格 : [50 ug]

[List All](#)

Specification

Product Description: Mouse polyclonal antibody raised against a full-length human CBR1 protein.

Immunogen: CBR1 (NP_001748.1, 1 a.a. ~ 277 a.a) full-length human protein.

Sequence:
 MSSGIHVALVTGGNKGIGLAIVRDLRFLSGDVLTARDVTRGQAAVQQ
 LQAEGLSPRFHQLDIDDLQSIRALRDFLRKEYGGDLVNVNAGIAFKVAD
 PTPFHIQAEVTMKTNFFGTRDVCPELLIKPQGRVNVSSIMSVRALKS
 CSPQLQQKFRSETITEELVGLMKNFVEDTKKGVHQKEGWSSAYGVT
 KIGVTVLSRIHARKLSEQRKGDKILLNACCPGWVRTDMAGPKATKSPEEG
 AETPVYLALLPPDAEGPHGQFVSEKRVEQW

Host: Mouse

Reactivity: Human

Quality Control Testing: Antibody reactive against mammalian transfected lysate.

Storage Buffer: In 1x PBS, pH 7.4

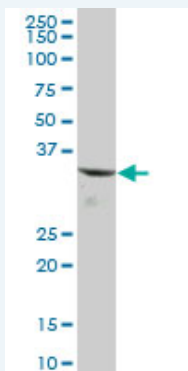
Storage Instruction: Store at -20°C or lower. Aliquot to avoid repeated freezing and thawing.

MSDS:  [Download](#)

Datasheet:  [Download](#)

Applications

Western Blot (Tissue lysate)



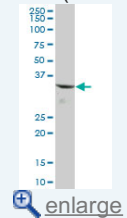
CBR1 MaxPab polyclonal antibody. Western Blot analysis of CBR1 expression in human liver.

 [Protocol Download](#)

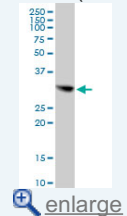
Western Blot (Cell lysate)

Application Image

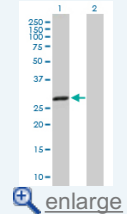
Western Blot (Tissue lysate)

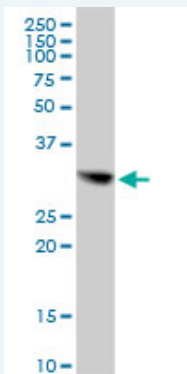


Western Blot (Cell lysate)



Western Blot (Transfected lysate)

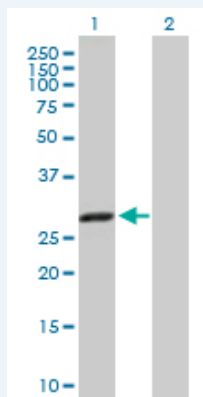




CBR1 MaxPab polyclonal antibody. Western Blot analysis of CBR1 expression in HeLa.

 [Protocol Download](#)

Western Blot (Transfected lysate)



Western Blot analysis of CBR1 expression in transfected 293T cell line ([H00000873-T01](#)) by CBR1 MaxPab polyclonal antibody.

Lane 1: CBR1 transfected lysate(30.47 KDa).

Lane 2: Non-transfected lysate.

 [Protocol Download](#)

Gene Information

Entrez GeneID: [873](#)

GeneBank [NM_001757.2](#)

Accession#:

Protein [NP_001748.1](#)

Accession#:

Gene Name: CBR1

Gene Alias: CBR,SDR21C1,hCBR1

Gene carbonyl reductase 1

Description:

Omim ID: [114830](#)

Gene Ontology: [Hyperlink](#)

Gene Summary: Carbonyl reductase is one of several monomeric, NADPH-dependent oxidoreductases having wide specificity for carbonyl compounds. This enzyme is widely distributed in human tissues. Another carbonyl reductase gene, CRB3, lies close to this gene on chromosome 21q. [provided by RefSeq]

Other Designations: carbonyl reductase (NADPH) 1,prostaglandin 9-ketoreductase,prostaglandin-E(2) 9-reductase,short chain

Gene Pathway

[Arachidonic acid metabolism](#) [Metabolic pathways](#)

Related Disease

[Breast cancer](#) [Breast Neoplasms](#) [Genetic Predisposition to Disease](#) [Lung Neoplasms](#)
[Pulmonary Disease, Chronic Obstructive](#) [Urinary Bladder Neoplasms](#) [Werner syndrome](#)

[服務條款](#) | [隱私權政策](#) | [著作及商標](#) | [網站地圖](#)

©2016 亞諾法生技股份有限公司 Abnova Corporation. 版權所有.