



# SZABO SCANDIC

Part of Europa Biosite

## Produktinformation



Forschungsprodukte & Biochemikalien



Zellkultur & Verbrauchsmaterial



Diagnostik & molekulare Diagnostik



Laborgeräte & Service

Weitere Information auf den folgenden Seiten!  
See the following pages for more information!



### Lieferung & Zahlungsart

siehe unsere [Liefer- und Versandbedingungen](#)

### Zuschläge

- Mindermengenzuschlag
- Trockeneiszuschlag
- Gefahrgutzuschlag
- Expressversand

### SZABO-SCANDIC HandelsgmbH

Quellenstraße 110, A-1100 Wien

T. +43(0)1 489 3961-0

F. +43(0)1 489 3961-7

[mail@szabo-scandic.com](mailto:mail@szabo-scandic.com)

[www.szabo-scandic.com](http://www.szabo-scandic.com)

[linkedin.com/company/szaboscandic](https://www.linkedin.com/company/szaboscandic) 

## CBR1 purified MaxPab rabbit polyclonal antibody (D01P) MaxPab®

Catalog # : H00000873-D01P

規格 : [ 100 ug ]

[List All](#)

### Specification

**Product Description:** Rabbit polyclonal antibody raised against a full-length human CBR1 protein.

**Immunogen:** CBR1 (NP\_001748.1, 1 a.a. ~ 277 a.a) full-length human protein.

**Sequence:**  
 MSSGIHVALVTGGNKGIGLAIVRDLRFLSGDVLTARDVTRGQAAVQQ  
 LQAEGLSPRFHQLDIDDLQSIRALRDFLRKEYGGDLVNVNAGIAFKVAD  
 PTPFHIQAEVTMKTNFFGTRDVCPELLIKPQGRVNVSSIMSVRALKS  
 CSPELQQKFRSETITEEELVGLMNKFVEDTKKGVHQKEGWSSAYGVT  
 KIGVTVLSRIHARKLSEQRKGDKILLNACCPGWVRTDMAGPKATKSPEEG  
 AETPVYLALLPPDAEGPHGQFVSEKRVEQW

**Host:** Rabbit

**Reactivity:** Human

**Quality Control Testing:** Antibody reactive against mammalian transfected lysate.

**Storage Buffer:** In 1x PBS, pH 7.4

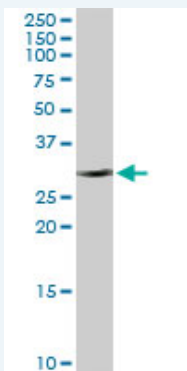
**Storage Instruction:** Store at -20°C or lower. Aliquot to avoid repeated freezing and thawing.

**MSDS:**  [Download](#)

**Datasheet:**  [Download](#)

### Applications

#### Western Blot (Tissue lysate)



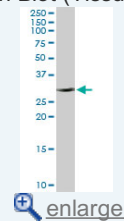
CBR1 MaxPab rabbit polyclonal antibody. Western Blot analysis of CBR1 expression in human liver.

 [Protocol Download](#)

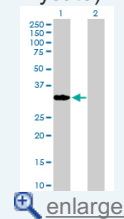
#### Western Blot (Transfected lysate)

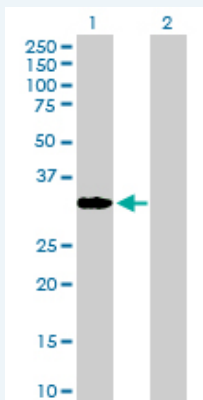
### Application Image

#### Western Blot (Tissue lysate)



#### Western Blot (Transfected lysate)





Western Blot analysis of CBR1 expression in transfected 293T cell line ([H00000873-T01](#)) by CBR1 MaxPab polyclonal antibody.

Lane 1: CBR1 transfected lysate(30.40 KDa).  
Lane 2: Non-transfected lysate.

 [Protocol Download](#)

### Gene Information

**Entrez GeneID:** [873](#)

**GeneBank Accession#:** [NM\\_001757.2](#)

**Protein Accession#:** [NP\\_001748.1](#)

**Gene Name:** CBR1

**Gene Alias:** CBR,SDR21C1,hCBR1

**Gene Description:** carbonyl reductase 1

**Omim ID:** [114830](#)

**Gene Ontology:** [Hyperlink](#)

**Gene Summary:** Carbonyl reductase is one of several monomeric, NADPH-dependent oxidoreductases having wide specificity for carbonyl compounds. This enzyme is widely distributed in human tissues. Another carbonyl reductase gene, CRB3, lies close to this gene on chromosome 21q. [provided by RefSeq]

**Other Designations:** carbonyl reductase (NADPH) 1,prostaglandin 9-ketoreductase,prostaglandin-E(2) 9-reductase,short chain dehydrogenase/reductase family 21C, member 1

### Gene Pathway

[Arachidonic acid metabolism](#) [Metabolic pathways](#)

### Related Disease

[Breast cancer](#) [Breast Neoplasms](#) [Genetic Predisposition to Disease](#) [Lung Neoplasms](#) [Pulmonary Disease](#), [Chronic Obstructive](#) [Urinary Bladder Neoplasms](#) [Werner syndrome](#)