



SZABO SCANDIC

Part of Europa Biosite

Produktinformation



Forschungsprodukte & Biochemikalien



Zellkultur & Verbrauchsmaterial



Diagnostik & molekulare Diagnostik



Laborgeräte & Service

Weitere Information auf den folgenden Seiten!
See the following pages for more information!



Lieferung & Zahlungsart

siehe unsere [Liefer- und Versandbedingungen](#)

Zuschläge

- Mindermengenzuschlag
- Trockeneiszuschlag
- Gefahrgutzuschlag
- Expressversand

SZABO-SCANDIC HandelsgmbH

Quellenstraße 110, A-1100 Wien

T. +43(0)1 489 3961-0

F. +43(0)1 489 3961-7

mail@szabo-scandic.com

www.szabo-scandic.com

[linkedin.com/company/szaboscandic](https://www.linkedin.com/company/szaboscandic) 

CBR1 monoclonal antibody (M02), clone 4D12-1G8

Catalog # : H00000873-M02

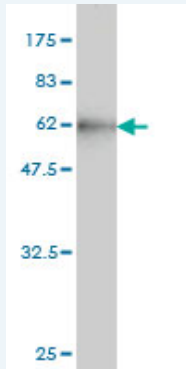
規格 : [100 ug]

[List All](#)

Specification

Product Description:	Mouse monoclonal antibody raised against a full length recombinant CBR1.
Immunogen:	CBR1 (AAH02511.1, 1 a.a. ~ 277 a.a) full-length recombinant protein with GST tag. MW of the GST tag alone is 26 KDa.
Sequence:	MSSGIHVALVTGGNKIGLAIVRDLCLRLFSGDVLTARDVTRGQAAVQQ LQAEGLSPRFHQLDIDDLQSIRALRDFLRKEYGGLDVLVNNAGIAFKVAD PTPFHIQAEVTMKTNFFGTRDVCTELLPLIKPQGRVVNVSSIMSVRALKS CSPQLQKFRSETITEELVGLMKNKFVEDTKKGVHQKEGWSSAYGVT KIGVTVLSRIHARKLSEQRKGDKILLNACCPGWVRTDMAGPKATKSPEEG AETPVYLALLPPDAEGPHGQFVSEKRVEQW
Host:	Mouse
Reactivity:	Human
Isotype:	IgG1 Kappa

Quality Control Testing: Antibody Reactive Against Recombinant Protein.



Western Blot detection against Immunogen (56.21 KDa) .

Storage Buffer: In 1x PBS, pH 7.4

Storage Instruction: Store at -20°C or lower. Aliquot to avoid repeated freezing and thawing.

MSDS: [Download](#)

Datasheet: [Download](#)

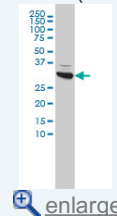
Publication Reference

1. [Functional characterization of the promoter of human carbonyl reductase 1 \(CBR1\). Role of XRE elements in mediating induction of CBR1 by ligands of the aryl hydrocarbon receptor.](#)
Lakhman SS, Chen X, Gonzalez-Covarrubias V, Schuetz EG, Blanco JG. Mol Pharmacol. 2007 Sep;72(3):734-43. Epub 2007 Jun 14.

Applications

Application Image

Western Blot (Cell lysate)

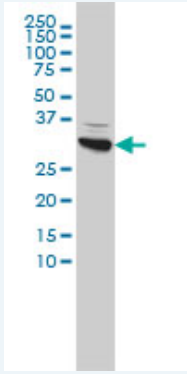


Western Blot (Recombinant protein)

Sandwich ELISA (Recombinant protein)

ELISA

Western Blot (Cell lysate)



CBR1 monoclonal antibody (M02), clone 4D12-1G8 Western Blot analysis of CBR1 expression in HeLa (Cat # L013V1).

 [Protocol Download](#)

Western Blot (Recombinant protein)

 [Protocol Download](#)

Sandwich ELISA (Recombinant protein)

Detection limit for recombinant GST tagged CBR1 is approximately 10ng/ml as a capture antibody.

 [Protocol Download](#)

ELISA

Gene Information

Entrez GeneID: [873](#)

GeneBank Accession#: [BC002511](#)

Protein Accession#: [AAH02511.1](#)

Gene Name: CBR1

Gene Alias: CBR,SDR21C1,hCBR1

Gene Description: carbonyl reductase 1

Omim ID: [114830](#)

Gene Ontology: [Hyperlink](#)

Gene Summary: Carbonyl reductase is one of several monomeric, NADPH-dependent oxidoreductases having wide specificity for carbonyl compounds. This enzyme is widely distributed in human tissues. Another carbonyl reductase gene, CRB3, lies close to this gene on chromosome 21q. [provided by RefSeq]

Other Designations: carbonyl reductase (NADPH) 1,prostaglandin 9-ketoreductase,prostaglandin-E(2) 9-reductase,short chain dehydrogenase/reductase family 21C, member 1

Gene Pathway

[Arachidonic acid metabolism](#) [Metabolic pathways](#)

Related Disease

[Breast cancer](#) [Breast Neoplasms](#) [Genetic Predisposition to Disease](#) [Lung Neoplasms](#) [Pulmonary Disease](#), [Chronic Obstructive](#) [Urinary Bladder Neoplasms](#) [Werner syndrome](#)

[服務條款](#) | [隱私權政策](#) | [著作及商標](#) | [網站地圖](#)

©2016 亞諾法生技股份有限公司 Abnova Corporation. 版權所有.