



# SZABO SCANDIC

Part of Europa Biosite

## Produktinformation



Forschungsprodukte & Biochemikalien



Zellkultur & Verbrauchsmaterial



Diagnostik & molekulare Diagnostik



Laborgeräte & Service

Weitere Information auf den folgenden Seiten!  
See the following pages for more information!



### Lieferung & Zahlungsart

siehe unsere [Liefer- und Versandbedingungen](#)

### Zuschläge

- Mindermengenzuschlag
- Trockeneiszuschlag
- Gefahrgutzuschlag
- Expressversand

### SZABO-SCANDIC HandelsgmbH

Quellenstraße 110, A-1100 Wien

T. +43(0)1 489 3961-0

F. +43(0)1 489 3961-7

[mail@szabo-scandic.com](mailto:mail@szabo-scandic.com)

[www.szabo-scandic.com](http://www.szabo-scandic.com)

[linkedin.com/company/szaboscandic](https://www.linkedin.com/company/szaboscandic) 

## CBR1 293T Cell Transient Overexpression Lysate(Denatured)

Catalog # : H00000873-T01

規格 : [ 100 uL ]

List All

### Specification

**Transfected Cell Line:** 293T

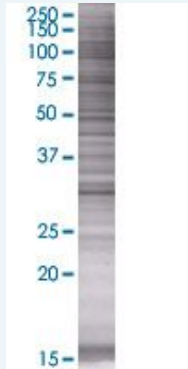
**Plasmid:** pCMV-CBR1 full-length

**Host:** Human

**Theoretical MW (kDa):** 30.58

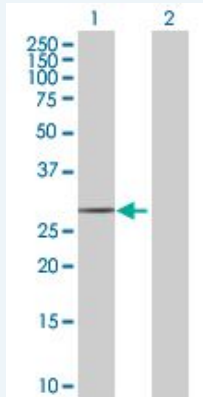
**Quality Control Testing:** Transient overexpression cell lysate was tested with Anti-CBR1 antibody (H00000873-B01) by Western Blots.

#### SDS-PAGE Gel



CBR1 transfected lysate.

#### Western Blot



Lane 1: CBR1 transfected lysate ( 30.58 KDa)

Lane 2: Non-transfected lysate.

**Storage Buffer:** 1X Sample Buffer (50 mM Tris-HCl, 2% SDS, 10% glycerol, 300 mM 2-mercaptoethanol, 0.01% Bromophenol blue)

**Storage Instruction:** Store at -80°C. Aliquot to avoid repeated freezing and thawing.

**MSDS:**  [Download](#)

### Applications

## Western Blot

### Gene Information

Entrez GeneID: [873](#)

GeneBank Accession#: [NM\\_001757.2](#)

Protein Accession#: [NP\\_001748.1](#)

Gene Name: CBR1

Gene Alias: CBR,SDR21C1,hCBR1

Gene Description: carbonyl reductase 1

Omim ID: [114830](#)

Gene Ontology: [Hyperlink](#)

**Gene Summary:** Carbonyl reductase is one of several monomeric, NADPH-dependent oxidoreductases having wide specificity for carbonyl compounds. This enzyme is widely distributed in human tissues. Another carbonyl reductase gene, CRB3, lies close to this gene on chromosome 21q. [provided by RefSeq]

**Other Designations:** carbonyl reductase (NADPH) 1,prostaglandin 9-ketoreductase,prostaglandin-E(2) 9-reductase,short chain dehydrogenase/reductase family 21C, member 1

### Gene Pathway

[Arachidonic acid metabolism](#) [Metabolic pathways](#)

### Related Disease

[Breast cancer](#) [Breast Neoplasms](#) [Genetic Predisposition to Disease](#) [Lung Neoplasms](#) [Pulmonary Disease, Chronic Obstructive](#) [Urinary Bladder Neoplasms](#) [Werner syndrome](#)

[服務條款](#) | [隱私權政策](#) | [著作及商標](#) | [網站地圖](#)

©2016 亞諾法生技股份有限公司 Abnova Corporation. 版權所有.