



SZABO SCANDIC

Part of Europa Biosite

Produktinformation



Forschungsprodukte & Biochemikalien



Zellkultur & Verbrauchsmaterial



Diagnostik & molekulare Diagnostik



Laborgeräte & Service

Weitere Information auf den folgenden Seiten!
See the following pages for more information!



Lieferung & Zahlungsart

siehe unsere [Liefer- und Versandbedingungen](#)

Zuschläge

- Mindermengenzuschlag
- Trockeneiszuschlag
- Gefahrgutzuschlag
- Expressversand

SZABO-SCANDIC HandelsgmbH

Quellenstraße 110, A-1100 Wien

T. +43(0)1 489 3961-0

F. +43(0)1 489 3961-7

mail@szabo-scandic.com

www.szabo-scandic.com

[linkedin.com/company/szaboscandic](https://www.linkedin.com/company/szaboscandic) 

CBR3 monoclonal antibody (M05), clone 1G8

Catalog # : H00000874-M05

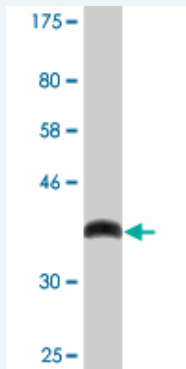
規格 : [100 ug]

[List All](#)

Specification

Product Description:	Mouse monoclonal antibody raised against a partial recombinant CBR3.
Immunogen:	CBR3 (NP_001227, 180 a.a. ~ 277 a.a) partial recombinant protein with GST tag. MW of the GST tag alone is 26 KDa.
Sequence:	KNEVHEREGWPNSPYGVSKLGVTVLSRILARRLDEKRAKADRILVNACCP GPVKTDMDGKDSIRTVEEGAETPVYLALLPPDATEPQQQLVHDKVQNW
Host:	Mouse
Reactivity:	Human
Isotype:	IgG1 Kappa

Quality Control Testing: Antibody Reactive Against Recombinant Protein.



Western Blot detection against Immunogen (36.52 KDa) .

Storage Buffer: In 1x PBS, pH 7.4

Storage Instruction: Store at -20°C or lower. Aliquot to avoid repeated freezing and thawing.

MSDS: [Download](#)

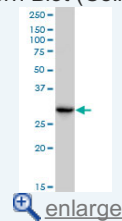
Datasheet: [Download](#)

Applications

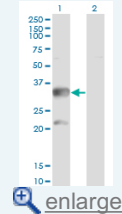
Western Blot (Cell lysate)

Application Image

Western Blot (Cell lysate)

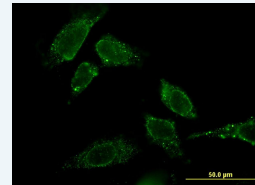


Western Blot (Transfected lysate)

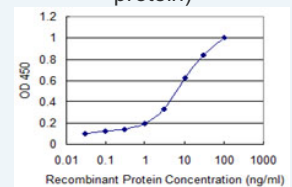


Western Blot (Recombinant protein)

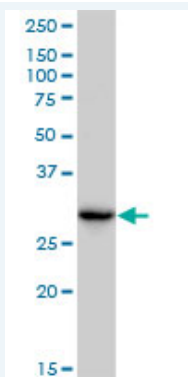
Immunofluorescence



Sandwich ELISA (Recombinant protein)



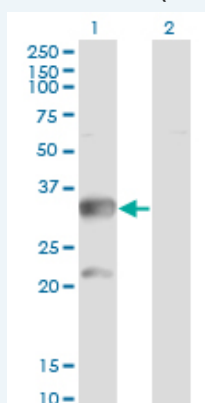
ELISA



CBR3 monoclonal antibody (M05), clone 1G8. Western Blot analysis of CBR3 expression in HepG2(Cat # L019V1).

 [Protocol Download](#)


Western Blot (Transfected lysate)




Western Blot analysis of CBR3 expression in transfected 293T cell line by CBR3 monoclonal antibody (M05), clone 1G8.

Lane 1: CBR3 transfected lysate (Predicted MW: 30.9 KDa).

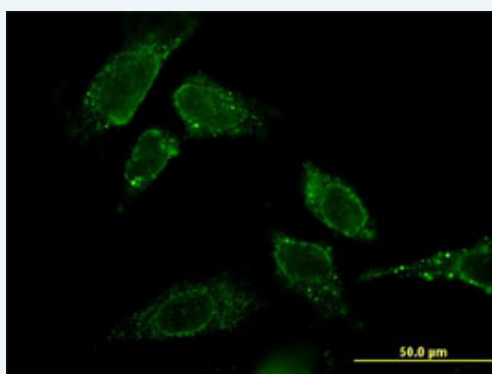
Lane 2: Non-transfected lysate.


 [Protocol Download](#)

Western Blot (Recombinant protein)


 [Protocol Download](#)

Immunofluorescence

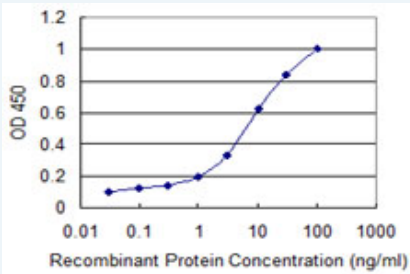


 [enlarge this image](#)


Immunofluorescence of monoclonal antibody to CBR3 on HeLa cell . [antibody concentration 10 ug/ml]

 [Protocol Download](#)

Sandwich ELISA (Recombinant protein)



Detection limit for recombinant GST tagged CBR3 is 0.3 ng/ml as a capture antibody.

 [Protocol Download](#)

ELISA

Gene Information

Entrez GeneID: [874](#)

GeneBank [NM_001236](#)

Accession#:

Protein [NP_001227](#)

Accession#:

Gene Name: CBR3

Gene Alias: SDR21C2,hCBR3

Gene carbonyl reductase 3

Description:

Omim ID: [603608](#)

Gene Ontology: [Hyperlink](#)

Gene Summary: Carbonyl reductase 3 catalyzes the reduction of a large number of biologically and pharmacologically active carbonyl compounds to their corresponding alcohols. The enzyme is classified as a monomeric NADPH-dependent oxidoreductase. CBR3 contains three exons spanning 11.2 kilobases and is closely linked to another carbonyl reductase gene - CBR1. [provided by RefSeq]

Other NADPH-dependent carbonyl reductase 3,carbonyl reductase (NADPH)

Designations: 3,short chain dehydrogenase/reductase family 21C, member 2

Gene Pathway

[Arachidonic acid metabolism](#) [Metabolic pathways](#)

Related Disease

[Breast cancer](#) [Breast Neoplasms](#) [Carcinoma](#) [Genetic Predisposition to Disease](#)

[Lung Neoplasms](#) [Neoplasms](#) [Obesity](#) [Ovarian Failure](#), [Premature](#)

[Polycystic Ovary Syndrome](#) [Puberty](#), [Delayed Puberty](#), [Precocious](#)

[Pulmonary Disease](#), [Chronic Obstructive](#) [Thrombophilia](#) [Tobacco Use Disorder](#)

[Urinary Bladder Neoplasms](#) [Werner syndrome](#)