



SZABO SCANDIC

Part of Europa Biosite

Produktinformation



Forschungsprodukte & Biochemikalien



Zellkultur & Verbrauchsmaterial



Diagnostik & molekulare Diagnostik



Laborgeräte & Service

Weitere Information auf den folgenden Seiten!
See the following pages for more information!



Lieferung & Zahlungsart

siehe unsere [Liefer- und Versandbedingungen](#)

Zuschläge

- Mindermengenzuschlag
- Trockeneiszuschlag
- Gefahrgutzuschlag
- Expressversand

SZABO-SCANDIC HandelsgmbH

Quellenstraße 110, A-1100 Wien

T. +43(0)1 489 3961-0

F. +43(0)1 489 3961-7

mail@szabo-scandic.com

www.szabo-scandic.com

[linkedin.com/company/szaboscandic](https://www.linkedin.com/company/szaboscandic) 

CBS (Human) Matched Antibody Pair

Catalog # : H00000875-AP11

規格 : [1 Set]

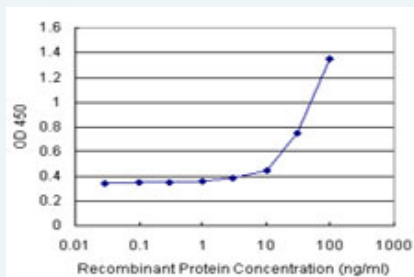
[List All](#)

Specification

Product Description: This antibody pair set comes with matched antibody pair to detect and quantify protein level of human CBS.

Reactivity: Human

Quality Control Testing: Standard curve using recombinant protein (H00000875-P01) as an analyte.



Sandwich ELISA detection sensitivity ranging from 3 ng/ml to 100 ng/ml.

Supplied Product: Antibody pair set content:
 1. Capture antibody: rabbit MaxPab® affinity purified polyclonal anti-CBS (100 ug)
 2. Detection antibody: mouse monoclonal anti-CBS, IgG1 Kappa (20 ug)
 *Reagents are sufficient for at least 1-2 x 96 well plates using recommended protocols.

Storage Instruction: Store reagents of the antibody pair set at -20°C or lower. Please aliquot to avoid repeated freeze thaw cycle. Reagents should be returned to -20°C storage immediately after use.

MSDS:  [Download](#)

Applications

ELISA Pair (Recombinant protein)

 [Protocol Download](#)

Gene Information

Entrez GeneID: [875](#)

Gene Name: CBS

Gene Alias: HIP4

Gene Description: cystathionine-beta-synthase

Omim ID: [236200](#)

Gene Ontology: [Hyperlink](#)

Gene Summary: The protein encoded by this gene acts as a homotetramer to catalyze the conversion of homocysteine to cystathionine, the first step in the transsulfuration pathway. The encoded protein is allosterically activated by adenosyl-methionine and uses pyridoxal phosphate as a cofactor. Defects in this gene can cause cystathionine beta-synthase deficiency (CBS), which can lead to homocystinuria. [provided by RefSeq]

Other Designations: OTTHUMP00000109416, OTTHUMP00000109418, beta-thionase, cystathionine beta-synthase, methylcysteine synthase, serine sulfhydrase

Gene Pathway

[Cysteine and methionine metabolism](#) [Glycine, serine and threonine metabolism](#)
[Metabolic pathways](#) [Selenoamino acid metabolism](#)

Related Disease

[Abnormalities](#) [Adenocarcinoma](#) [Alzheimer Disease](#) [Alzheimer disease](#)
[Aortic Aneurysm, Abdominal](#) [Arterial Occlusive Diseases](#) [Arteriosclerosis](#) [Atherosclerosis](#)
[Attention](#) [Brain Infarction](#) [Brain Ischemia](#) [Brain Neoplasms](#) [Breast cancer](#) [Breast Neoplasms](#)
[Calcinosis](#) [Carcinoma](#) [Carcinoma, Squamous Cell](#) [Cardiovascular Diseases](#)
[Carotid Artery, Internal, Dissection](#)

... see more

[服務條款](#) | [隱私權政策](#) | [著作及商標](#) | [網站地圖](#)

©2016 亞諾法生技股份有限公司 Abnova Corporation. 版權所有.