



SZABO SCANDIC

Part of Europa Biosite

Produktinformation



Forschungsprodukte & Biochemikalien



Zellkultur & Verbrauchsmaterial



Diagnostik & molekulare Diagnostik



Laborgeräte & Service

Weitere Information auf den folgenden Seiten!
See the following pages for more information!



Lieferung & Zahlungsart

siehe unsere [Liefer- und Versandbedingungen](#)

Zuschläge

- Mindermengenzuschlag
- Trockeneiszuschlag
- Gefahrgutzuschlag
- Expressversand

SZABO-SCANDIC HandelsgmbH

Quellenstraße 110, A-1100 Wien

T. +43(0)1 489 3961-0

F. +43(0)1 489 3961-7

mail@szabo-scandic.com

www.szabo-scandic.com

[linkedin.com/company/szaboscandic](https://www.linkedin.com/company/szaboscandic)

CBS purified MaxPab mouse polyclonal antibody (B01P) MaxPab®

Catalog # : H00000875-B01P

規格 : [50 ug]

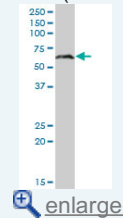
[List All](#)

Specification

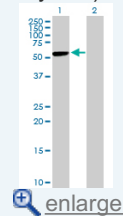
Product Description:	Mouse polyclonal antibody raised against a full-length human CBS protein.
Immunogen:	CBS (NP_000062.1, 1 a.a. ~ 551 a.a) full-length human protein.
Sequence:	MPSETPQAEVGP TGCPHRSGPHSAKGSLEKGS PEDKEAKEPLWIRPDA PSRCTWQLGRPASESPHHHTAPAKSPKILPDILKKIGDTPMVRINKIGKKF GLKCELLAKCEFFNAGGSVKDRISLRMIEDAERDGTLPKPGDTIIIEPTSGNT GIGLALAAAVRGYRCIIVMPEKMSSEKVDVLRALGAEIVRTPTNARFDSPE SHVGVAVRLKNEIPNSHILDQYRNASNPLAHYDTTADEILQQCDGKLDML VASVGTGGTITGIARKLKEKCPGCRIGVDPEGSILAEPEELNQTEQTTYE VEGIGYDFIPTVLDRTVVDKWFKSNDEEAFTFARMLIAQEGLLCGGSAG STVAVAVKAAQELQEGQRCVILPDSVRNYMTKFLSDRWMLQKGFLE EDLTEKKPWWWHLRVQELGLSAPLTVLPTITCGHTIEILREKGFDAQPVV DEAGVILGMVTLGNMLSSLLAGKVQPSDQVGKVIYKQFKQIRLTDLGRLL SHILEMDHFALVHEQIQYHSTGKSSQRQMVFGVVT AIDLLNFVAAQERD QK
Host:	Mouse
Reactivity:	Human
Quality Control Testing:	Antibody reactive against mammalian transfected lysate.
Storage Buffer:	In 1x PBS, pH 7.4
Storage Instruction:	Store at -20°C or lower. Aliquot to avoid repeated freezing and thawing.
MSDS:	Download
Datasheet:	Download

Application Image

Western Blot (Tissue lysate)

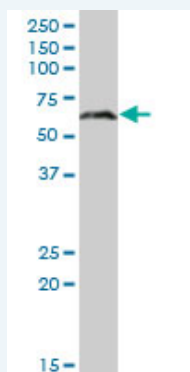


Western Blot (Transfected lysate)



Applications

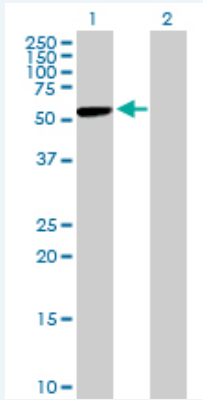
Western Blot (Tissue lysate)



CBS MaxPab polyclonal antibody. Western Blot analysis of CBS expression in human liver.

[Protocol Download](#)

Western Blot (Transfected lysate)



Western Blot analysis of CBS expression in transfected 293T cell line ([H00000875-T01](#)) by CBS MaxPab polyclonal antibody.

Lane 1: CBS transfected lysate(60.61 KDa).

Lane 2: Non-transfected lysate.

 [Protocol Download](#)

Gene Information

Entrez GeneID: [875](#)

GeneBank [NM_000071.1](#)
Accession#:

Protein [NP_000062.1](#)
Accession#:

Gene Name: CBS

Gene Alias: HIP4

Gene [cystathionine-beta-synthase](#)
Description:

Omim ID: [236200](#)

Gene Ontology: [Hyperlink](#)

Gene Summary: The protein encoded by this gene acts as a homotetramer to catalyze the conversion of homocysteine to cystathionine, the first step in the transsulfuration pathway. The encoded protein is allosterically activated by adenosyl-methionine and uses pyridoxal phosphate as a cofactor. Defects in this gene can cause cystathionine beta-synthase deficiency (CBS), which can lead to homocystinuria. [provided by RefSeq]

Other Designations: OTTHUMP00000109416,OTTHUMP00000109418,beta-thionase,cystathionine beta-synthase,methylcysteine synthase,serine sulfhydrase

Gene Pathway

[Cysteine and methionine metabolism](#) [Glycine, serine and threonine metabolism](#)
[Metabolic pathways](#) [Selenoamino acid metabolism](#)

Related Disease

[Abnormalities](#) [Adenocarcinoma](#) [Alzheimer Disease](#) [Alzheimer disease](#)
[Aortic Aneurysm, Abdominal](#) [Arterial Occlusive Diseases](#) [Arteriosclerosis](#) [Atherosclerosis](#)
[Attention](#) [Brain Infarction](#) [Brain Ischemia](#) [Brain Neoplasms](#) [Breast cancer](#) [Breast Neoplasms](#)
[Calcinosis](#) [Carcinoma](#) [Carcinoma, Squamous Cell](#) [Cardiovascular Diseases](#)
[Carotid Artery, Internal, Dissection](#)

... see more

[服務條款](#) | [隱私權政策](#) | [著作及商標](#) | [網站地圖](#)

©2016 亞諾法生技股份有限公司 Abnova Corporation. 版權所有.