



SZABO SCANDIC

Part of Europa Biosite

Produktinformation



Forschungsprodukte & Biochemikalien



Zellkultur & Verbrauchsmaterial



Diagnostik & molekulare Diagnostik



Laborgeräte & Service

Weitere Information auf den folgenden Seiten!
See the following pages for more information!



Lieferung & Zahlungsart

siehe unsere [Liefer- und Versandbedingungen](#)

Zuschläge

- Mindermengenzuschlag
- Trockeneiszuschlag
- Gefahrgutzuschlag
- Expressversand

SZABO-SCANDIC HandelsgmbH

Quellenstraße 110, A-1100 Wien

T. +43(0)1 489 3961-0

F. +43(0)1 489 3961-7

mail@szabo-scandic.com

www.szabo-scandic.com

[linkedin.com/company/szaboscandic](https://www.linkedin.com/company/szaboscandic) 

CBS purified MaxPab rabbit polyclonal antibody (D01P) MaxPab®

Catalog # : H00000875-D01P

規格 : [100 ug]

[List All](#)

Specification

| | |
|---------------------------------|--|
| Product Description: | Rabbit polyclonal antibody raised against a full-length human CBS protein. |
| Immunogen: | CBS (NP_000062.1, 1 a.a. ~ 551 a.a) full-length human protein. |
| Sequence: | MPSETPQAEVGP TGCPHRSGPHSAKGSLEKGSPEDEKEAKEPLWIRPDA PSRCTWQLGRPAESP HHHTAPAKSPKILPDILKKIGDTPMVRINKIGKKF GLKCELLAKCEFFNAGGSVKDRISLRMIEDAERDGT LKPGDTIIIEPTSGNT GIGLALAAAVRGYRCIIVMPEKMSSEKVDVLRALGAEIVRTP TNARFDSPE SHVGVAVWRLKNEIPNSHILDQYRNASNPLAHYD TTADEILQQCDGKLDML VASVGTGGTITGIARKLKEKCPGCRIGVDPEGSILAEPEELNQTEQT TTYE VEGIGYDFIPTVLDRTVVDKWFKSNDEEAF TFARMLIAQEGLLCGGSAG STVAVAVKAAQELQEQRCVILPDSVRNYMTKFLSDRWMLQKGF LKE EDLTEKKPWWWHLRVQELGLSAPLTVLPTITCGHTIEILREKGF DQAPVV DEAGVILGMVTLGNMLSSLLAGKVQPSDQVGKVIYKQFKQIRL TDTLGR L SHILEMDHFALVHEQIQYHSTGKSSQRQMVFGVVT AIDLLNFVAAQERD QK |
| Host: | Rabbit |
| Reactivity: | Human, Mouse |
| Quality Control Testing: | Antibody reactive against mammalian transfected lysate. |
| Storage Buffer: | In 1x PBS, pH 7.4 |
| Storage Instruction: | Store at -20°C or lower. Aliquot to avoid repeated freezing and thawing. |
| MSDS: | Download |
| Datasheet: | Download |

Publication Reference

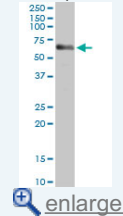
- Selectivity of commonly used pharmacological inhibitors for cystathionine beta synthase (CBS) and cystathionine gamma lyase (CSE).
Asimakopoulou A, Panopoulos P, Chasapis CT, Coletta C, Zhou Z, Cirino G, Giannis A, Szabo C, Spyroulias GA, Papapetropoulos ABr J Pharmacol. 2013 Mar 14. doi: 10.1111/bph.12171.
- Promoter demethylation of cystathionine-β-synthetase gene contributes to inflammatory pain in rats.
Qi F, Zhou Y, Xiao Y, Tao J, Gu J, Jiang X, Xu GY.Pain. 2013 Jan;154(1):34-45. doi: 10.1016/j.pain.2012.07.031. Epub 2012 Dec 25.

Applications

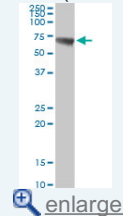
Western Blot (Tissue lysate)

Application Image

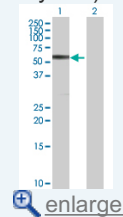
Western Blot (Tissue lysate)

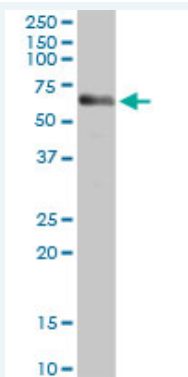


Western Blot (Tissue lysate)



Western Blot (Transfected lysate)

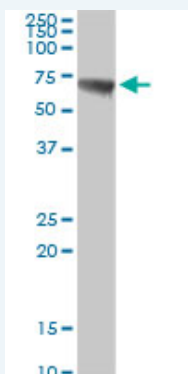




CBS MaxPab rabbit polyclonal antibody. Western Blot analysis of CBS expression in human pancreas.

[Protocol Download](#)

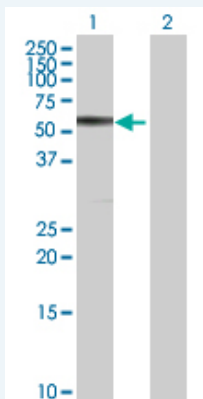
Western Blot (Tissue lysate)



CBS MaxPab rabbit polyclonal antibody. Western Blot analysis of CBS expression in mouse kidney.

[Protocol Download](#)

Western Blot (Transfected lysate)



Western Blot analysis of CBS expression in transfected 293T cell line (H00000875-T01) by CBS MaxPab polyclonal antibody.

Lane 1: CBS transfected lysate(60.60 KDa).

Lane 2: Non-transfected lysate.

[Protocol Download](#)

Gene Information

Entrez GeneID: [875](#)

GeneBank [NM_000071.1](#)
Accession#:

Protein [NP_000062.1](#)
Accession#:

Gene Name: CBS

Gene Alias: HIP4

Gene Description: cystathionine-beta-synthase

Omim ID: [236200](#)

Gene Ontology: [Hyperlink](#)

Gene Summary: The protein encoded by this gene acts as a homotetramer to catalyze the conversion of homocysteine to cystathionine, the first step in the transsulfuration pathway. The encoded protein is allosterically activated by adenosyl-methionine and uses pyridoxal phosphate as a cofactor. Defects in this gene can cause cystathionine beta-synthase deficiency (CBS), which can lead to homocystinuria. [provided by RefSeq]

Other Designations: OTTHUMP00000109416,OTTHUMP00000109418,beta-thionase,cystathionine beta-synthase,methylcysteine synthase,serine sulfhydrase

Gene Pathway

[Cysteine and methionine metabolism](#) [Glycine, serine and threonine metabolism](#)
[Metabolic pathways](#) [Selenoamino acid metabolism](#)

Related Disease

[Abnormalities](#) [Adenocarcinoma](#) [Alzheimer Disease](#) [Alzheimer disease](#)
[Aortic Aneurysm, Abdominal](#) [Arterial Occlusive Diseases](#) [Arteriosclerosis](#) [Atherosclerosis](#)
[Attention](#) [Brain Infarction](#) [Brain Ischemia](#) [Brain Neoplasms](#) [Breast cancer](#) [Breast Neoplasms](#)
[Calcinosis](#) [Carcinoma](#) [Carcinoma, Squamous Cell](#) [Cardiovascular Diseases](#)
[Carotid Artery, Internal, Dissection](#)

... see more

[服務條款](#) | [隱私權政策](#) | [著作及商標](#) | [網站地圖](#)

©2016 亞諾法生技股份有限公司 Abnova Corporation. 版權所有.