



SZABO SCANDIC

Part of Europa Biosite

Produktinformation



Forschungsprodukte & Biochemikalien



Zellkultur & Verbrauchsmaterial



Diagnostik & molekulare Diagnostik



Laborgeräte & Service

Weitere Information auf den folgenden Seiten!
See the following pages for more information!



Lieferung & Zahlungsart

siehe unsere [Liefer- und Versandbedingungen](#)

Zuschläge

- Mindermengenzuschlag
- Trockeneiszuschlag
- Gefahrgutzuschlag
- Expressversand

SZABO-SCANDIC HandelsgmbH

Quellenstraße 110, A-1100 Wien

T. +43(0)1 489 3961-0

F. +43(0)1 489 3961-7

mail@szabo-scandic.com

www.szabo-scandic.com

[linkedin.com/company/szaboscandic](https://www.linkedin.com/company/szaboscandic) 

CBS monoclonal antibody (M06), clone 6A9

Catalog # : H00000875-M06

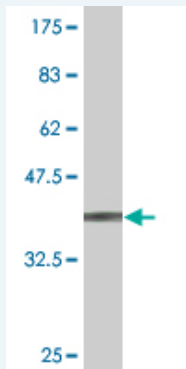
規格 : [100 ug]

[List All](#)

Specification

Product Description:	Mouse monoclonal antibody raised against a partial recombinant CBS.
Immunogen:	CBS (NP_000062, 1 a.a. ~ 100 a.a) partial recombinant protein with GST tag. MW of the GST tag alone is 26 KDa.
Sequence:	MPSETPQAEVGPTGCPHRSGPHSAKGSLEKGSPEDEKEAKEPLWIRPDA PSRCTWQLGRPASESPHHHTAPAKSPKILPDILKKIGDTPMVRINKIGKKF G
Host:	Mouse
Reactivity:	Human
Isotype:	IgG1 Kappa

Quality Control Testing: Antibody Reactive Against Recombinant Protein.



Western Blot detection against Immunogen (36.74 KDa) .

Storage Buffer: In 1x PBS, pH 7.4

Storage Instruction: Store at -20°C or lower. Aliquot to avoid repeated freezing and thawing.

MSDS: [Download](#)

Datasheet: [Download](#)

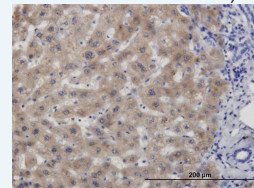
Publication Reference

- [Sex-specific dysregulation of cysteine oxidation and the methionine and folate cycles in female cystathionine gamma-lyase null mice: a serendipitous model of the methylfolate trap.](#)
Jiang H, Hurt KJ, Breen K, Stabler SP, Allen RH, Orlicky DJ, Maclean KN. *Biol Open*. 2015 Aug 14;4(9):1154-62.
- [Purification and characterization of cystathionine \[gamma\]-synthase bearing a cobalt protoporphyrin.](#)
Majtan T, Freeman KM, Smith AT, Burstyn JN, Kraus JP. *Arch Biochem Biophys*. 2011 Jan 22. [Epub ahead of print]

Application Image

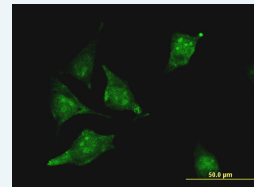
Western Blot (Recombinant protein)

Immunohistochemistry (Formalin/PFA-fixed paraffin-embedded sections)



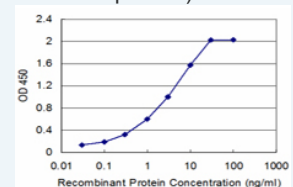
[enlarge](#)

Immunofluorescence



[enlarge](#)

Sandwich ELISA (Recombinant protein)



[enlarge](#)

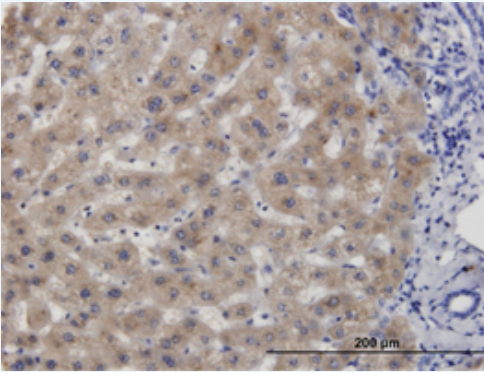
ELISA


Applications

Western Blot (Recombinant protein)

 [Protocol Download](#)

Immunohistochemistry (Formalin/PFA-fixed paraffin-embedded sections)

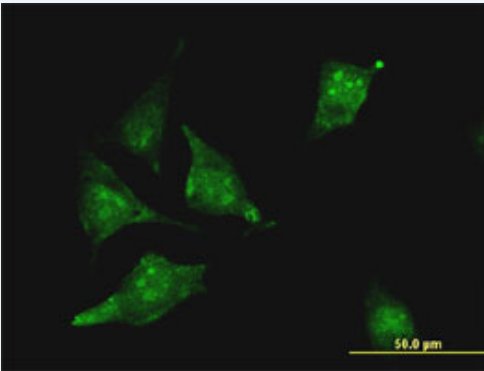



 [enlarge this image](#)

Immunoperoxidase of monoclonal antibody to CBS on formalin-fixed paraffin-embedded human liver. [antibody concentration 3 ug/ml]

 [Protocol Download](#)

Immunofluorescence

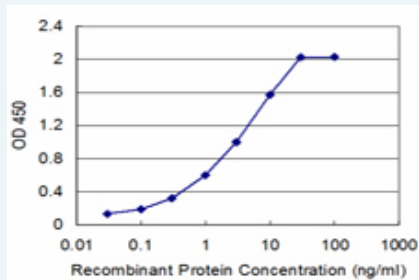


 [enlarge this image](#)

Immunofluorescence of monoclonal antibody to CBS on HeLa cell . [antibody concentration 20 ug/ml]

 [Protocol Download](#)

Sandwich ELISA (Recombinant protein)



Detection limit for recombinant GST tagged CBS is approximately 0.03ng/ml as a capture antibody.

 [Protocol Download](#)

ELISA

Gene Information

Entrez GeneID: [875](#)

GeneBank [NM_000071](#)

Accession#:

Protein [NP_000062](#)

Accession#:

Gene Name: CBS

Gene Alias: HIP4

Gene Description: cystathionine-beta-synthase

Omim ID: [236200](#)

Gene Ontology: [Hyperlink](#)

Gene Summary: The protein encoded by this gene acts as a homotetramer to catalyze the conversion of homocysteine to cystathionine, the first step in the transsulfuration pathway. The encoded protein is allosterically activated by adenosyl-methionine and uses pyridoxal phosphate as a cofactor. Defects in this gene can cause cystathionine beta-synthase deficiency (CBS), which can lead to homocystinuria. [provided by RefSeq]

Other Designations: OTTHUMP00000109416,OTTHUMP00000109418,beta-thionase,cystathionine beta-synthase,methylcysteine synthase,serine sulfhydrase

Gene Pathway

[Cysteine and methionine metabolism](#) [Glycine, serine and threonine metabolism](#)
[Metabolic pathways](#) [Selenoamino acid metabolism](#)

Related Disease

[Abnormalities](#) [Adenocarcinoma](#) [Alzheimer Disease](#) [Alzheimer disease](#)
[Aortic Aneurysm](#), [Abdominal Arterial Occlusive Diseases](#) [Arteriosclerosis](#) [Atherosclerosis](#)
[Attention Brain Infarction](#) [Brain Ischemia](#) [Brain Neoplasms](#) [Breast cancer](#) [Breast Neoplasms](#)
[Calcinosis](#) [Carcinoma](#) [Carcinoma, Squamous Cell](#) [Cardiovascular Diseases](#)
[Carotid Artery, Internal, Dissection](#)

... see more

[服務條款](#) | [隱私權政策](#) | [著作及商標](#) | [網站地圖](#)

©2016 亞諾法生技股份有限公司 Abnova Corporation. 版權所有.