



SZABO SCANDIC

Part of Europa Biosite

Produktinformation



Forschungsprodukte & Biochemikalien



Zellkultur & Verbrauchsmaterial



Diagnostik & molekulare Diagnostik



Laborgeräte & Service

Weitere Information auf den folgenden Seiten!
See the following pages for more information!



Lieferung & Zahlungsart

siehe unsere [Liefer- und Versandbedingungen](#)

Zuschläge

- Mindermengenzuschlag
- Trockeneiszuschlag
- Gefahrgutzuschlag
- Expressversand

SZABO-SCANDIC HandelsgmbH

Quellenstraße 110, A-1100 Wien

T. +43(0)1 489 3961-0

F. +43(0)1 489 3961-7

mail@szabo-scandic.com

www.szabo-scandic.com

[linkedin.com/company/szaboscandic](https://www.linkedin.com/company/szaboscandic) 

CBS monoclonal antibody (M07), clone 5F7

Catalog # : H00000875-M07

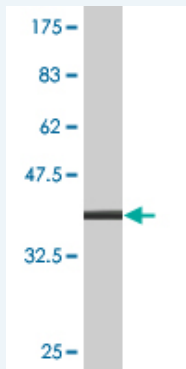
規格 : [100 ug]

[List All](#)

Specification

Product Description:	Mouse monoclonal antibody raised against a partial recombinant CBS.
Immunogen:	CBS (NP_000062, 1 a.a. ~ 100 a.a) partial recombinant protein with GST tag. MW of the GST tag alone is 26 KDa.
Sequence:	MPSETPQAEVGPTGCPHRSGPHSAKGSLEKGSPEDEKEAKEPLWIRPDA PSRCTWQLGRPASESPHHHTAPAKSPKILPDILKKIGDTPMVRINKIGKKF G
Host:	Mouse
Reactivity:	Human
Isotype:	IgG1 Kappa

Quality Control Testing: Antibody Reactive Against Recombinant Protein.



Western Blot detection against Immunogen (36.74 KDa) .

Storage Buffer: In 1x PBS, pH 7.4

Storage Instruction: Store at -20°C or lower. Aliquot to avoid repeated freezing and thawing.

MSDS: [Download](#)

Datasheet: [Download](#)

Applications

Western Blot (Recombinant protein)

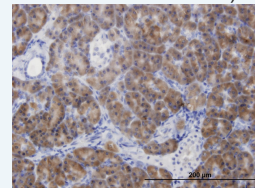
[Protocol Download](#)

Immunohistochemistry (Formalin/PFA-fixed paraffin-embedded sections)

Application Image

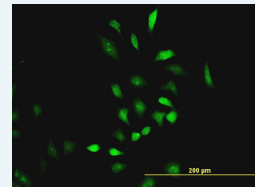
Western Blot (Recombinant protein)

Immunohistochemistry (Formalin/PFA-fixed paraffin-embedded sections)



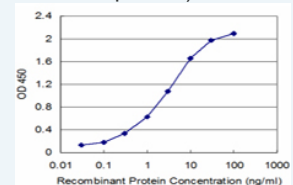
[enlarge](#)

Immunofluorescence



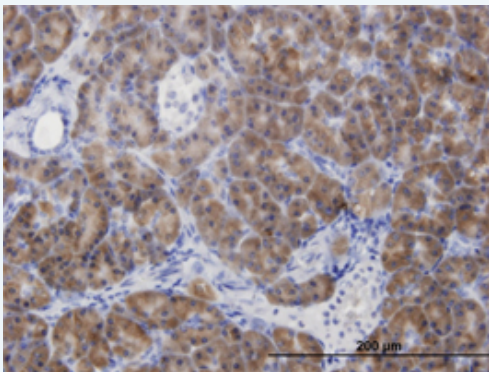
[enlarge](#)

Sandwich ELISA (Recombinant protein)



[enlarge](#)

ELISA

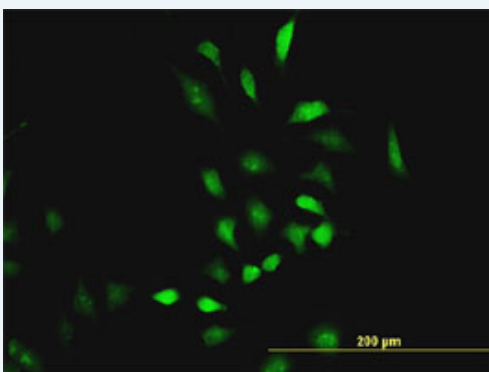


[enlarge this image](#)

Immunoperoxidase of monoclonal antibody to CBS on formalin-fixed paraffin-embedded human pancreas. [antibody concentration 3 ug/ml]

[Protocol Download](#)

Immunofluorescence

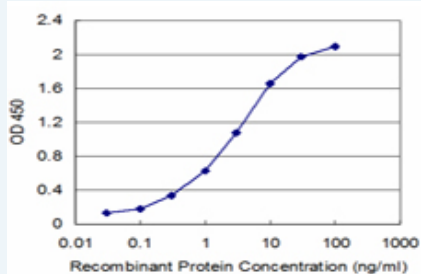


[enlarge this image](#)

Immunofluorescence of monoclonal antibody to CBS on HeLa cell . [antibody concentration 15 ug/ml]

[Protocol Download](#)

Sandwich ELISA (Recombinant protein)



Detection limit for recombinant GST tagged CBS is approximately 0.03ng/ml as a capture antibody.

[Protocol Download](#)

ELISA

Gene Information

Entrez GeneID: [875](#)

GeneBank Accession#: [NM_000071](#)

Protein Accession#: [NP_000062](#)

Gene Name: CBS

Gene Alias: HIP4

Gene Description: cystathionine-beta-synthase

Omim ID: [236200](#)

Gene Ontology: [Hyperlink](#)

Gene Summary: The protein encoded by this gene acts as a homotetramer to catalyze the conversion of homocysteine to cystathionine, the first step in the transsulfuration pathway. The encoded protein is allosterically activated by adenosyl-methionine and uses pyridoxal phosphate as a cofactor. Defects in this gene can cause cystathionine beta-synthase deficiency (CBS), which can lead to homocystinuria. [provided by RefSeq]

Other Designations: OTTHUMP00000109416, OTTHUMP00000109418, beta-thionase, cystathionine beta-synthase, methylcysteine synthase, serine sulfhydrase

Gene Pathway

[Cysteine and methionine metabolism](#) [Glycine, serine and threonine metabolism](#)
[Metabolic pathways](#) [Selenoamino acid metabolism](#)

Related Disease

[Abnormalities](#) [Adenocarcinoma](#) [Alzheimer Disease](#) [Alzheimer disease](#)
[Aortic Aneurysm, Abdominal](#) [Arterial Occlusive Diseases](#) [Arteriosclerosis](#) [Atherosclerosis](#)
[Attention](#) [Brain Infarction](#) [Brain Ischemia](#) [Brain Neoplasms](#) [Breast cancer](#) [Breast Neoplasms](#)
[Calcinosis](#) [Carcinoma](#) [Carcinoma, Squamous Cell](#) [Cardiovascular Diseases](#)
[Carotid Artery, Internal, Dissection](#)

... see more

[服務條款](#) | [隱私權政策](#) | [著作及商標](#) | [網站地圖](#)

©2016 亞諾法生技股份有限公司 Abnova Corporation. 版權所有.