



SZABO SCANDIC

Part of Europa Biosite

Produktinformation



Forschungsprodukte & Biochemikalien



Zellkultur & Verbrauchsmaterial



Diagnostik & molekulare Diagnostik



Laborgeräte & Service

Weitere Information auf den folgenden Seiten!
See the following pages for more information!



Lieferung & Zahlungsart

siehe unsere [Liefer- und Versandbedingungen](#)

Zuschläge

- Mindermengenzuschlag
- Trockeneiszuschlag
- Gefahrgutzuschlag
- Expressversand

SZABO-SCANDIC HandelsgmbH

Quellenstraße 110, A-1100 Wien

T. +43(0)1 489 3961-0

F. +43(0)1 489 3961-7

mail@szabo-scandic.com

www.szabo-scandic.com

[linkedin.com/company/szaboscandic](https://www.linkedin.com/company/szaboscandic) 

CCBL1 MaxPab mouse polyclonal antibody (B01) MaxPab®

Catalog # : H00000883-B01

規格 : [50 uL]

[List All](#)

Specification

Product Description: Mouse polyclonal antibody raised against a full-length human CCBL1 protein.

Immunogen: CCBL1 (AAH33685, 1 a.a. ~ 374 a.a) full-length human protein.

Sequence:
 MAKQLQARRLDGIDYNPWVEFVKLASEHDVNLGQGFPDFPPDFAVE
 AFQHAVSGDFMLNQYTKTFVIIIPEFFDCYEPMTMMAGGRPVFVSLKPGP
 IQNGELGSSSNWQLDPMELAGKFTSRTKALVLNTPNNPLGKVSREELE
 LVASLCQQHDVVCITDEVYQWMVYDGHQHISIASLPGMWERTLTIGSAG
 KTFSATGWKVGWVLGPDHIMKHLRTVHQNSVFHCPTQSQAAVAESFER
 EQLLFRQPSSYFVQFPQAMQRCRDHMIRSLQSVGLKPIIPQGSYFLITDIS
 DFKRKMPDLPGAVDEPYDRRFVKWMIKNGLVAIPVSIFYSVPHQKHFDH
 YIRFCFVKDEATLQAMDEKLRKWKVELWP

Host: Mouse

Reactivity: Human

Quality Control Testing: Antibody reactive against mammalian transfected lysate.

Storage Buffer: No additive

Storage Instruction: Store at -20°C or lower. Aliquot to avoid repeated freezing and thawing.

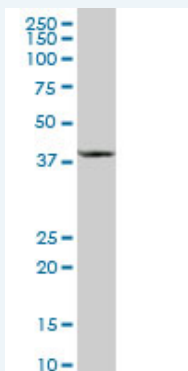
Note: For IHC and IF applications, antibody purification with Protein A will be needed prior to use.

MSDS:  [Download](#)


Datasheet:  [Download](#)

Applications

Western Blot (Tissue lysate)

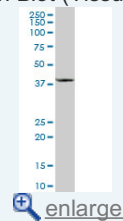


CCBL1 MaxPab polyclonal antibody. Western Blot analysis of CCBL1 expression in human liver.

 [Protocol Download](#)

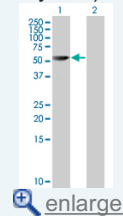
Application Image

Western Blot (Tissue lysate)



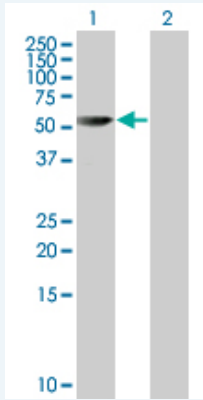
 [enlarge](#)

Western Blot (Transfected lysate)



 [enlarge](#)


Western Blot (Transfected lysate)



Western Blot analysis of CCBL1 expression in transfected 293T cell line ([H00000883-T01](#)) by CCBL1 MaxPab polyclonal antibody.

Lane 1: CCBL1 transfected lysate(41.25 KDa).

Lane 2: Non-transfected lysate.

 [Protocol Download](#)

Gene Information

Entrez GeneID: [883](#)

GeneBank [BC033685](#)
Accession#:

Protein [AAH33685](#)
Accession#:

Gene Name: CCBL1

Gene Alias: FLJ95217, GTK, KAT1, KATI, MGC29624

Gene Description: cysteine conjugate-beta lyase, cytoplasmic

Omim ID: [600547](#)

Gene Ontology: [Hyperlink](#)

Gene Summary: This gene encodes a cytosolic enzyme that is responsible for the metabolism of cysteine conjugates of certain halogenated alkenes and alkanes. This metabolism can form reactive metabolites leading to nephrotoxicity and neurotoxicity. Increased levels of this enzyme have been linked to schizophrenia. Multiple transcript variants that encode different isoforms have been identified for this gene. [provided by RefSeq]

Other Designations: OTTHUMP00000022311, beta-lysase, kidney, cysteine conjugate-beta lyase; cytoplasmic (glutamine transaminase K, kyneurenine aminotransferase), cytoplasmic cysteine conjugate-beta lyase, glutamine transaminase K, glutamine-phenylpyruvate aminotransferase, kyneure