



SZABO SCANDIC

Part of Europa Biosite

Produktinformation



Forschungsprodukte & Biochemikalien



Zellkultur & Verbrauchsmaterial



Diagnostik & molekulare Diagnostik



Laborgeräte & Service

Weitere Information auf den folgenden Seiten!
See the following pages for more information!



Lieferung & Zahlungsart

siehe unsere [Liefer- und Versandbedingungen](#)

Zuschläge

- Mindermengenzuschlag
- Trockeneiszuschlag
- Gefahrgutzuschlag
- Expressversand

SZABO-SCANDIC HandelsgmbH

Quellenstraße 110, A-1100 Wien

T. +43(0)1 489 3961-0

F. +43(0)1 489 3961-7

mail@szabo-scandic.com

www.szabo-scandic.com

[linkedin.com/company/szaboscandic](https://www.linkedin.com/company/szaboscandic) 

CCBL1 purified MaxPab mouse polyclonal antibody (B01P) MaxPab®

Catalog # : H00000883-B01P

規格 : [50 ug]

[List All](#)

Specification

| | |
|---------------------------------|---|
| Product Description: | Mouse polyclonal antibody raised against a full-length human CCBL1 protein. |
| Immunogen: | CCBL1 (AAH33685, 1 a.a. ~ 374 a.a) full-length human protein. |
| Sequence: | MAKQLQARRLDGIDYNPWVEFVKLASEHDVNLGQGFPDFPPDFAVE AFQHAVSGDFMLNQYTKTFVIIIPEFFDCYEPMTMMAGGRPVFVSLKPGP IQNGELGSSSNWQLDPMELAGKFTSRTKALVLNTPNNPLGKVSREELE LVASLCQQHDVVCITDEVYQWMVYDGHQHSIASLPGMWERTLTIGSAG KTFSATGWKVGWVLGPDHIMKHLRTVHQNSVFHCPTQSQAAVAESFER EQLLFRQPSSYFVQFPQAMQRCRDHMIRSLQSVGLKPIIPQGSYFLITDIS DFKRKMPDLPGAVDEPYDRRFVKWMIKNGLVAIPVSIFYSVPHQKHFDH YIRFCFVKDEATLQAMDEKLRKWKVELWP |
| Host: | Mouse |
| Reactivity: | Human |
| Quality Control Testing: | Antibody reactive against mammalian transfected lysate. |

Storage Buffer: In 1x PBS, pH 7.4

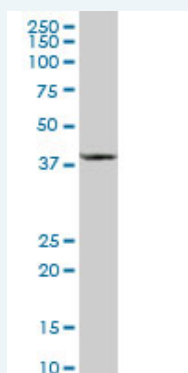
Storage Instruction: Store at -20°C or lower. Aliquot to avoid repeated freezing and thawing.

MSDS: [Download](#)

Datasheet: [Download](#)

Applications

Western Blot (Tissue lysate)



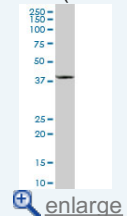
CCBL1 MaxPab polyclonal antibody. Western Blot analysis of CCBL1 expression in human liver.

[Protocol Download](#)

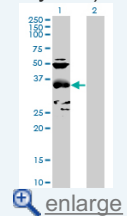
Western Blot (Transfected lysate)

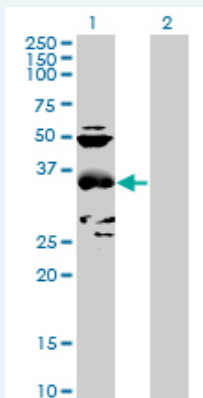
Application Image

Western Blot (Tissue lysate)



Western Blot (Transfected lysate)






Western Blot analysis of CCBL1 expression in transfected 293T cell line ([H00000883-T01](#)) by CCBL1 MaxPab polyclonal antibody.

Lane 1: CCBL1 transfected lysate(41.25 KDa).

Lane 2: Non-transfected lysate.

 [Protocol Download](#)

Gene Information

Entrez GeneID: [883](#)

GeneBank [BC033685](#)

Accession#:

Protein [AAH33685](#)

Accession#:

Gene Name: CCBL1

Gene Alias: FLJ95217,GTK,KAT1,KATI,MGC29624

Gene cysteine conjugate-beta lyase, cytoplasmic

Description:

Omim ID: [600547](#)

Gene Ontology: [Hyperlink](#)

Gene Summary: This gene encodes a cytosolic enzyme that is responsible for the metabolism of cysteine conjugates of certain halogenated alkenes and alkanes. This metabolism can form reactive metabolites leading to nephrotoxicity and neurotoxicity. Increased levels of this enzyme have been linked to schizophrenia. Multiple transcript variants that encode different isoforms have been identified for this gene. [provided by RefSeq]

Other Designations: OTTHUMP00000022311,beta-lysase, kidney,cysteine conjugate-beta lyase; cytoplasmic (glutamine transaminase K, kyneurenine aminotransferase),cytoplasmic cysteine conjugate-beta lyase,glutamine transaminase K,glutamine-phenylpyruvate aminotransferase,kyneure