



# SZABO SCANDIC

Part of Europa Biosite

## Produktinformation



Forschungsprodukte & Biochemikalien



Zellkultur & Verbrauchsmaterial



Diagnostik & molekulare Diagnostik



Laborgeräte & Service

Weitere Information auf den folgenden Seiten!  
See the following pages for more information!



### Lieferung & Zahlungsart

siehe unsere [Liefer- und Versandbedingungen](#)

### Zuschläge

- Mindermengenzuschlag
- Trockeneiszuschlag
- Gefahrgutzuschlag
- Expressversand

### SZABO-SCANDIC HandelsgmbH

Quellenstraße 110, A-1100 Wien

T. +43(0)1 489 3961-0

F. +43(0)1 489 3961-7

[mail@szabo-scandic.com](mailto:mail@szabo-scandic.com)

[www.szabo-scandic.com](http://www.szabo-scandic.com)

[linkedin.com/company/szaboscandic](https://www.linkedin.com/company/szaboscandic) 

## CCBL1 MaxPab mouse polyclonal antibody (B02) MaxPab®

Catalog # : H00000883-B02

規格 : [ 50 uL ]

[List All](#)

### Specification

**Product Description:** Mouse polyclonal antibody raised against a full-length human CCBL1 protein.

**Immunogen:** CCBL1 (AAH21262.1, 1 a.a. ~ 250 a.a) full-length human protein.

**Sequence:** MAKQLQARRLDGIDYNPWVEFVKLASEHDVNLGQGFPDFPPDFAVE  
AFQHAVSGDFMLNQYTKTFGYPLTKILASFFGELLGQEIDPLRNLVTV  
GGYGALFTAFQALVDEGDEVIIIEPFDCYEPMTMMAGGRPVFVSLKPG  
PIQNGELGSSSNWQLDPMELAGKFTSRTKALVLNTPNNPLGKVF SREEL  
ELVASLCCQHDVVCITDEVYQWMVYDGHQHSIVSAAVLFGLGQPASLA  
CGNGP

**Host:** Mouse

**Reactivity:** Human

**Quality Control Testing:** Antibody reactive against mammalian transfected lysate.

**Storage Buffer:** No additive

**Storage Instruction:** Store at -20°C or lower. Aliquot to avoid repeated freezing and thawing.

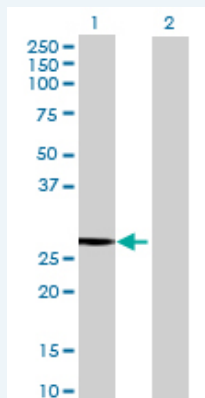
**Note:** For IHC and IF applications, antibody purification with Protein A will be needed prior to use.

**MSDS:**  [Download](#)

**Datasheet:**  [Download](#)

### Applications

#### Western Blot (Transfected lysate)



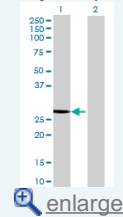
Western Blot analysis of CCBL1 expression in transfected 293T cell line ([H00000883-T02](#)) by CCBL1 MaxPab polyclonal antibody.


Lane1:CCBL1 transfected lysate(27.5 KDa).

Lane2:Non-transfected lysate.

### Application Image

Western Blot (Transfected lysate)



 [enlarge](#)

## Gene Information

---

**Entrez GeneID:** [883](#)

---

**GeneBank  
Accession#:** [BC021262.2](#)

---

**Protein  
Accession#:** [AAH21262.1](#)

---

**Gene Name:** CCBL1

---

**Gene Alias:** FLJ95217, GTK, KAT1, KATI, MGC29624

---

**Gene  
Description:** cysteine conjugate-beta lyase, cytoplasmic

---

**Omim ID:** [600547](#)

---

**Gene Ontology:** [Hyperlink](#)

---

**Gene Summary:** This gene encodes a cytosolic enzyme that is responsible for the metabolism of cysteine conjugates of certain halogenated alkenes and alkanes. This metabolism can form reactive metabolites leading to nephrotoxicity and neurotoxicity. Increased levels of this enzyme have been linked to schizophrenia. Multiple transcript variants that encode different isoforms have been identified for this gene. [provided by RefSeq]

---

**Other  
Designations:** OTTHUMP00000022311, beta-lysase, kidney, cysteine conjugate-beta lyase; cytoplasmic (glutamine transaminase K, kyneurenine aminotransferase), cytoplasmic cysteine conjugate-beta lyase, glutamine transaminase K, glutamine-phenylpyruvate aminotransferase, kyneure

---