



SZABO SCANDIC

Part of Europa Biosite

Produktinformation



Forschungsprodukte & Biochemikalien



Zellkultur & Verbrauchsmaterial



Diagnostik & molekulare Diagnostik



Laborgeräte & Service

Weitere Information auf den folgenden Seiten!
See the following pages for more information!



Lieferung & Zahlungsart

siehe unsere [Liefer- und Versandbedingungen](#)

Zuschläge

- Mindermengenzuschlag
- Trockeneiszuschlag
- Gefahrgutzuschlag
- Expressversand

SZABO-SCANDIC HandelsgmbH

Quellenstraße 110, A-1100 Wien

T. +43(0)1 489 3961-0

F. +43(0)1 489 3961-7

mail@szabo-scandic.com

www.szabo-scandic.com

[linkedin.com/company/szaboscandic](https://www.linkedin.com/company/szaboscandic) 

CCBL1 purified MaxPab mouse polyclonal antibody (B02P) MaxPab®

Catalog # : H00000883-B02P

規格 : [50 ug]

[List All](#)

Specification

Product Description: Mouse polyclonal antibody raised against a full-length human CCBL1 protein.

Immunogen: CCBL1 (AAH21262.1, 1 a.a. ~ 250 a.a) full-length human protein.

Sequence:
 MAKQLQARRLDGIDYNPWVEFVKLASEHDVNLGQGFPDFPPDFAVE
 AFQHAVSGDFMLNQYTKTFGYPLTKILASFFGELLGQEIDPLRNLVTV
 GGYGALFTAFQALVDEGDEVIIIEPFFDCYEPMTMMAGGRP VFVSLKPG
 PIQNGELGSSSNWQLDPMELAGKFTSRTKALVLNTPNNPLGKVF SREEL
 ELVASLCQQHDVVCITDEVYQWMVYDGHQHSIVSAAVLFGLGQPASLA
 CGNGP

Host: Mouse

Reactivity: Human

Quality Control Testing: Antibody reactive against mammalian transfected lysate.

Storage Buffer: In 1x PBS, pH 7.4

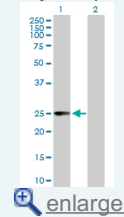
Storage Instruction: Store at -20°C or lower. Aliquot to avoid repeated freezing and thawing.

MSDS: [Download](#)

Datasheet: [Download](#)

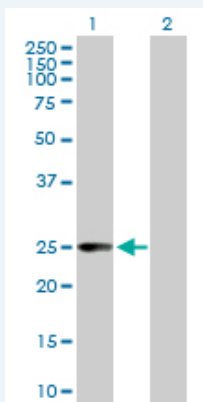
Application Image

Western Blot (Transfected lysate)



Applications

Western Blot (Transfected lysate)



Western Blot analysis of CCBL1 expression in transfected 293T cell line ([H00000883-T02](#)) by CCBL1 MaxPab polyclonal antibody.

Lane1:CCBL1 transfected lysate(27.5 KDa).

Lane2:Non-transfected lysate.

[Protocol Download](#)

Gene Information

Entrez GeneID: [883](#)

**GeneBank
Accession#:** [BC021262.2](#)

**Protein
Accession#:** [AAH21262.1](#)

Gene Name: CCBL1

Gene Alias: FLJ95217,GTK,KAT1,KATI,MGC29624

**Gene
Description:** cysteine conjugate-beta lyase, cytoplasmic

Omim ID: [600547](#)

Gene Ontology: [Hyperlink](#)

Gene Summary: This gene encodes a cytosolic enzyme that is responsible for the metabolism of cysteine conjugates of certain halogenated alkenes and alkanes. This metabolism can form reactive metabolites leading to nephrotoxicity and neurotoxicity. Increased levels of this enzyme have been linked to schizophrenia. Multiple transcript variants that encode different isoforms have been identified for this gene. [provided by RefSeq]

**Other
Designations:** OTTHUMP00000022311,beta-lysase, kidney,cysteine conjugate-beta lyase; cytoplasmic (glutamine transaminase K, kyneurenine aminotransferase),cytoplasmic cysteine conjugate-beta lyase,glutamine transaminase K,glutamine-phenylpyruvate aminotransferase,kyneure

[服務條款](#) | [隱私權政策](#) | [著作及商標](#) | [網站地圖](#)

©2016 亞諾法生技股份有限公司 Abnova Corporation. 版權所有.