



# SZABO SCANDIC

Part of Europa Biosite

## Produktinformation



Forschungsprodukte & Biochemikalien



Zellkultur & Verbrauchsmaterial



Diagnostik & molekulare Diagnostik



Laborgeräte & Service

Weitere Information auf den folgenden Seiten!  
See the following pages for more information!



### Lieferung & Zahlungsart

siehe unsere [Liefer- und Versandbedingungen](#)

### Zuschläge

- Mindermengenzuschlag
- Trockeneiszuschlag
- Gefahrgutzuschlag
- Expressversand

### SZABO-SCANDIC HandelsgmbH

Quellenstraße 110, A-1100 Wien

T. +43(0)1 489 3961-0

F. +43(0)1 489 3961-7

[mail@szabo-scandic.com](mailto:mail@szabo-scandic.com)

[www.szabo-scandic.com](http://www.szabo-scandic.com)

[linkedin.com/company/szaboscandic](https://www.linkedin.com/company/szaboscandic) 

## CCBL1 monoclonal antibody (M02), clone 1B12

Catalog # : H00000883-M02

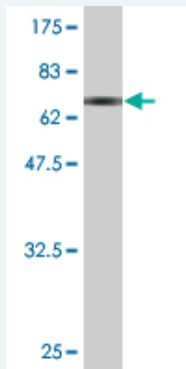
規格 : [ 100 ug ]

List All

### Specification

<b>Product Description:</b>	Mouse monoclonal antibody raised against a full-length recombinant CCBL1.
<b>Immunogen:</b>	CCBL1 (AAH33685, 1 a.a. ~ 374 a.a) full-length recombinant protein with GST tag. MW of the GST tag alone is 26 KDa.
<b>Sequence:</b>	MAKQLQARRLDGIDYNPWVEFVKLASEHDVWNLGQGFDPDFPPDFAVE AFQHAVSGDFMLNQYTKTFVIIIPEFFDCYEPMTMMAGGRPVFVSLKPGP IQNGELGSSSNWQLDPMELAGKFTSRTKALVLNTPNNPLGKVFSSREELE LVASLCQQHDVVCITDEVYQWMYDGHQHISIASLPGMMWERTLTIGSAG KTF SATGWKVGWV L GPDHIMKHLRTVHQNSVFHCPTQSQA AVAESFER EQLLFRQPSSYFVQFPQAMQRCRDHMIRSLQSVGLKPIIPQGSYFLITDIS DFKRKMPDLPGAVDEPYDRRFVKWMIKNGKGLVAIPVSIFYSVPHQKHFDDH YIRFCFKDEATLQAMDEKLRKWKVELWP
<b>Host:</b>	Mouse
<b>Reactivity:</b>	Human
<b>Isotype:</b>	IgG2a Kappa

**Quality Control Testing:** Antibody Reactive Against Recombinant Protein.



Western Blot detection against Immunogen (66.88 KDa) .

**Storage Buffer:** In 1x PBS, pH 7.4

**Storage Instruction:** Store at -20°C or lower. Aliquot to avoid repeated freezing and thawing.

**MSDS:** [Download](#)

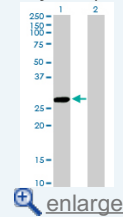
**Datasheet:** [Download](#)

### Applications

Western Blot (Transfected lysate)

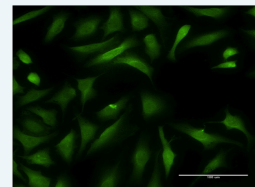
### Application Image

Western Blot (Transfected lysate)

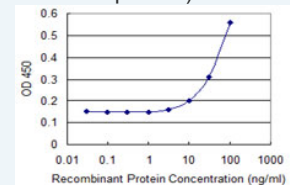


Western Blot (Recombinant protein)

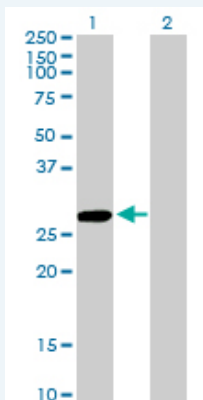
Immunofluorescence



Sandwich ELISA (Recombinant protein)



ELISA



Western Blot analysis of CCBL1 expression in transfected 293T cell line by CCBL1 monoclonal antibody (M02), clone 1B12.

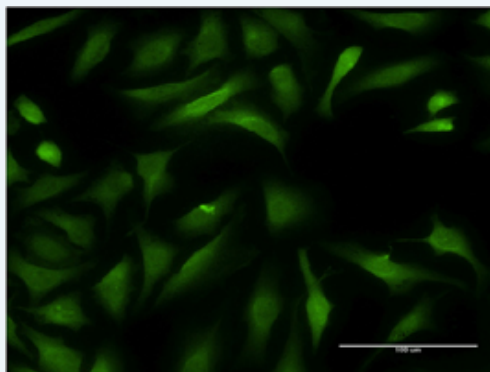
Lane 1: CCBL1 transfected lysate(27.4 KDa).  
Lane 2: Non-transfected lysate.

[Protocol Download](#)

### Western Blot (Recombinant protein)

[Protocol Download](#)

### Immunofluorescence

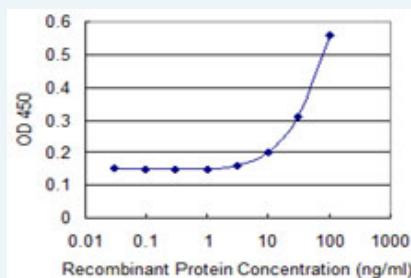


[enlarge this image](#)

Immunofluorescence of monoclonal antibody to CCBL1 on HeLa cell . [antibody concentration 10 ug/ml]

[Protocol Download](#)

### Sandwich ELISA (Recombinant protein)



Detection limit for recombinant GST tagged CCBL1 is 3 ng/ml as a capture antibody.

[Protocol Download](#)

### ELISA

### Gene Information

Entrez GeneID: [883](#)

GeneBank [BC033685](#)

Accession#:

Protein [AAH33685](#)

Accession#:

**Gene Name:** CCBL1

**Gene Alias:** FLJ95217,GTK,KAT1,KATI,MGC29624

**Gene Description:** cysteine conjugate-beta lyase, cytoplasmic

**Omim ID:** [600547](#)

**Gene Ontology:** [Hyperlink](#)

**Gene Summary:** This gene encodes a cytosolic enzyme that is responsible for the metabolism of cysteine conjugates of certain halogenated alkenes and alkanes. This metabolism can form reactive metabolites leading to nephrotoxicity and neurotoxicity. Increased levels of this enzyme have been linked to schizophrenia. Multiple transcript variants that encode different isoforms have been identified for this gene. [provided by RefSeq]

**Other Designations:** OTTHUMP00000022311,beta-lysase, kidney,cysteine conjugate-beta lyase; cytoplasmic (glutamine transaminase K, kyneurenine aminotransferase),cytoplasmic cysteine conjugate-beta lyase,glutamine transaminase K,glutamine-phenylpyruvate aminotransferase,kyneure

[服務條款](#) | [隱私權政策](#) | [著作及商標](#) | [網站地圖](#)

©2016 亞諾法生技股份有限公司 Abnova Corporation. 版權所有.