

CCBL1 (Human) Recombinant Protein (P01)

Catalog # : H00000883-P01

規格 : [10 ug] [25 ug]

[List All](#)

Specification

Product Description: Human CCBL1 full-length ORF (AAH33685, 1 a.a. - 374 a.a.) recombinant protein with GST-tag at N-terminal.

Sequence: MAKQLQARRLDGIDYNPWVEFVKLASEHDVNLGQGFPDFPPDFAVE AFQHAVSGDFMLNQYTKTFVIIIPEFFDCYEPMTMMAGGRPVFVSLKPGP IQNGELGSSSNWQLDPMELAGKFTSRTKALVLNTPNNPLGKVF SREELE LVASLCQQHDVVCITDEVYQWMYDGHQHISIASLPGMWERTLTIGSAG KTF SATGWKVGWVLGPDHIMKHLRTVHQNSVFHCPTQSQA AVAESFER EQLLFRQPSSYFVQFPQAMQRCRDHMIRSLQSVGLKPIIPQGSYFLITDIS DFKRKMPDLPGAVDEPYDRRFVKWMIKNKGLVAIPVSIFYSPHQKHFHDH YIRFCFVKDEATLQAMDEKLRKWKVELWP

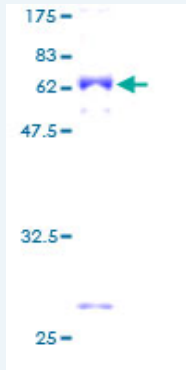
Host: Wheat Germ (in vitro)

Theoretical MW (kDa): 66.88

Preparation Method: *in vitro* wheat germ expression system

Purification: Glutathione Sepharose 4 Fast Flow

Quality Control Testing: 12.5% SDS-PAGE Stained with Coomassie Blue.



Storage Buffer: 50 mM Tris-HCl, 10 mM reduced Glutathione, pH=8.0 in the elution buffer.

Storage Instruction: Store at -80°C. Aliquot to avoid repeated freezing and thawing.

Note: Best use within three months from the date of receipt of this protein.

MSDS: [Download](#)

Datasheet: [Download](#)

Applications

Enzyme-linked Immunoabsorbent Assay

Application Image

Enzyme-linked Immunoabsorbent Assay

Western Blot (Recombinant protein)

Antibody Production

Protein Array

Western Blot (Recombinant protein)

Antibody Production

Protein Array

Gene Information

Entrez GeneID: [883](#)

GeneBank
Accession#: [BC033685](#)

Protein
Accession#: [AAH33685](#)

Gene Name: CCBL1

Gene Alias: FLJ95217,GTK,KAT1,KATI,MGC29624

Gene
Description: cysteine conjugate-beta lyase, cytoplasmic

Omim ID: [600547](#)

Gene Ontology: [Hyperlink](#)

Gene Summary: This gene encodes a cytosolic enzyme that is responsible for the metabolism of cysteine conjugates of certain halogenated alkenes and alkanes. This metabolism can form reactive metabolites leading to nephrotoxicity and neurotoxicity. Increased levels of this enzyme have been linked to schizophrenia. Multiple transcript variants that encode different isoforms have been identified for this gene. [provided by RefSeq]

Other Designations: OTTHUMP00000022311,beta-lysase, kidney,cysteine conjugate-beta lyase; cytoplasmic (glutamine transaminase K, kyneurenine aminotransferase),cytoplasmic cysteine conjugate-beta lyase,glutamine transaminase K,glutamine-phenylpyruvate aminotransferase,kyneure