



SZABO SCANDIC

Part of Europa Biosite

Produktinformation



Forschungsprodukte & Biochemikalien



Zellkultur & Verbrauchsmaterial



Diagnostik & molekulare Diagnostik



Laborgeräte & Service

Weitere Information auf den folgenden Seiten!
See the following pages for more information!



Lieferung & Zahlungsart

siehe unsere [Liefer- und Versandbedingungen](#)

Zuschläge

- Mindermengenzuschlag
- Trockeneiszuschlag
- Gefahrgutzuschlag
- Expressversand

SZABO-SCANDIC HandelsgmbH

Quellenstraße 110, A-1100 Wien

T. +43(0)1 489 3961-0

F. +43(0)1 489 3961-7

mail@szabo-scandic.com

www.szabo-scandic.com

[linkedin.com/company/szaboscandic](https://www.linkedin.com/company/szaboscandic) 

CCBL1 293T Cell Transient Overexpression Lysate(Denatured)

Catalog # : H00000883-T01

規格 : [100 uL]

[List All](#)

Specification

Transfected Cell Line: 293T

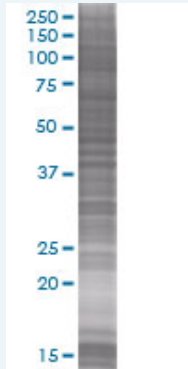
Plasmid: pCMV-CCBL1 full-length

Host: Human

Theoretical MW (kDa): 41.25

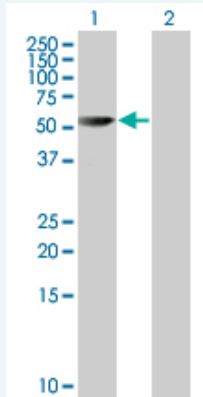
Quality Control Testing: Transient overexpression cell lysate was tested with Anti-CCBL1 antibody ([H00000883-B01](#)) by Western Blots.

SDS-PAGE Gel



CCBL1 transfected lysate

Western Blot



Lane 1: CCBL1 transfected lysate (41.25 KDa).

Lane 2: Non-transfected lysate.

Storage Buffer: 1X Sample Buffer (50 mM Tris-HCl, 2% SDS, 10% glycerol, 300 mM 2-mercaptoethanol, 0.01% Bromophenol blue)

Storage Instruction: Store at -80°C. Aliquot to avoid repeated freezing and thawing.

MSDS:  [Download](#)

Applications

Application Image

Western Blot

Western Blot

Gene Information

Entrez GeneID: [883](#)

GeneBank Accession#: [BC033685](#)

Protein Accession#: [AAH33685](#)

Gene Name: CCBL1

Gene Alias: FLJ95217,GTK,KAT1,KATI,MGC29624

Gene Description: cysteine conjugate-beta lyase, cytoplasmic

Omim ID: [600547](#)

Gene Ontology: [Hyperlink](#)

Gene Summary: This gene encodes a cytosolic enzyme that is responsible for the metabolism of cysteine conjugates of certain halogenated alkenes and alkanes. This metabolism can form reactive metabolites leading to nephrotoxicity and neurotoxicity. Increased levels of this enzyme have been linked to schizophrenia. Multiple transcript variants that encode different isoforms have been identified for this gene. [provided by RefSeq]

Other Designations: OTTHUMP00000022311,beta-lysase, kidney,cysteine conjugate-beta lyase; cytoplasmic (glutamine transaminase K, kyneurenine aminotransferase),cytoplasmic cysteine conjugate-beta lyase,glutamine transaminase K,glutamine-phenylpyruvate aminotransferase,kyneure