



SZABO SCANDIC

Part of Europa Biosite

Produktinformation



Forschungsprodukte & Biochemikalien



Zellkultur & Verbrauchsmaterial



Diagnostik & molekulare Diagnostik



Laborgeräte & Service

Weitere Information auf den folgenden Seiten!
See the following pages for more information!



Lieferung & Zahlungsart

siehe unsere [Liefer- und Versandbedingungen](#)

Zuschläge

- Mindermengenzuschlag
- Trockeneiszuschlag
- Gefahrgutzuschlag
- Expressversand

SZABO-SCANDIC HandelsgmbH

Quellenstraße 110, A-1100 Wien

T. +43(0)1 489 3961-0

F. +43(0)1 489 3961-7

mail@szabo-scandic.com

www.szabo-scandic.com

[linkedin.com/company/szaboscandic](https://www.linkedin.com/company/szaboscandic) 

KRIT1 polyclonal antibody (A01)

Catalog # : H00000889-A01

規格 : [50 uL]

List All

Specification

Product Description: Mouse polyclonal antibody raised against a partial recombinant KRIT1.

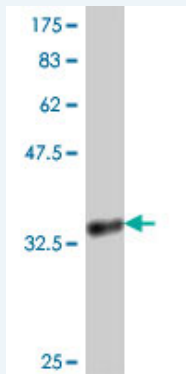
Immunogen: KRIT1 (NP_004903, 637 a.a. ~ 736 a.a) partial recombinant protein with GST tag.

Sequence: AAFFTGQIFTKASPSNHKVIPVYVGVNIKGLHLLNMETKALLISLKYGCFM
WQLGDTDTCFQIHSMENKMSFIVHTKQAGLVVKLLMKLNGQLMPТЕРNS

Host: Mouse

Reactivity: Human

Quality Control Testing: Antibody Reactive Against Recombinant Protein.



Western Blot detection against Immunogen (37.11 kDa) .

Storage Buffer: 50 % glycerol

Storage Instruction: Store at -20°C or lower. Aliquot to avoid repeated freezing and thawing.

MSDS: [Download](#)

Datasheet: [Download](#)

Applications

Western Blot (Recombinant protein)

[Protocol Download](#)

ELISA

Gene Information

Entrez GeneID: [889](#)

GeneBank Accession#: [NM_004912](#)

Protein [NP_004903](#)

Accession#:

Gene Name: KRIT1

Gene Alias: CAM,CCM1

Gene Description: KRIT1, ankyrin repeat containing

Omim ID: [116860](#), [604214](#)

Gene Ontology: [Hyperlink](#)

Gene Summary: This gene encodes a protein containing four ankyrin repeats, a band 4.1/ezrin/radixin/moesin (FERM) domain, and multiple NPXY sequences. The encoded protein is localized in the nucleus and cytoplasm. It binds to integrin cytoplasmic domain-associated protein-1 alpha (ICAP1alpha), and plays a critical role in beta1-integrin-mediated cell proliferation. It associates with junction proteins and RAS-related protein 1A (Rap1A), which requires the encoded protein for maintaining the integrity of endothelial junctions. It is also a microtubule-associated protein and may play a role in microtubule targeting. Mutations in this gene result in cerebral cavernous malformations. Multiple alternatively spliced transcript variants have been found for this gene. [provided by RefSeq]

Other Designations: ankyrin repeat-containing protein Krit1,cerebral cavernous malformations 1,krev interaction trapped 1

Related Disease

[Hemangioma, Cavernous, Central Nervous System Tobacco Use Disorder](#)