



# SZABO SCANDIC

Part of Europa Biosite

## Produktinformation



Forschungsprodukte & Biochemikalien



Zellkultur & Verbrauchsmaterial



Diagnostik & molekulare Diagnostik



Laborgeräte & Service

Weitere Information auf den folgenden Seiten!  
See the following pages for more information!



### Lieferung & Zahlungsart

siehe unsere [Liefer- und Versandbedingungen](#)

### Zuschläge

- Mindermengenzuschlag
- Trockeneiszuschlag
- Gefahrgutzuschlag
- Expressversand

### SZABO-SCANDIC HandelsgmbH

Quellenstraße 110, A-1100 Wien

T. +43(0)1 489 3961-0

F. +43(0)1 489 3961-7

[mail@szabo-scandic.com](mailto:mail@szabo-scandic.com)

[www.szabo-scandic.com](http://www.szabo-scandic.com)

[linkedin.com/company/szaboscandic](https://www.linkedin.com/company/szaboscandic) 

## KRIT1 monoclonal antibody (M02), clone 1D8

Catalog # : H00000889-M02

規格 : [ 100 ug ]

[List All](#)

### Specification

**Product Description:** Mouse monoclonal antibody raised against a partial recombinant KRIT1.

**Immunogen:** KRIT1 (NP\_004903, 637 a.a. ~ 736 a.a) partial recombinant protein with GST tag. MW of the GST tag alone is 26 KDa.

**Sequence:** AAFFTGQIFTKASPSNHKVIPVYVGVNIKGLHLLNMETKALLISLKYGCFM  
WQLGDTDTCFQIHSMENKMSFIVHTKQAGLVKLLMKLNGQLMPTERNS

**Host:** Mouse

**Reactivity:** Human

**Isotype:** IgG1 Kappa

**Quality Control Testing:** Antibody Reactive Against Recombinant Protein.

**Storage Buffer:** In 1x PBS, pH 7.4

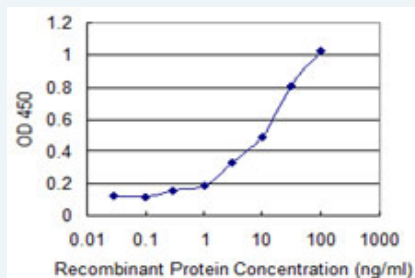
**Storage Instruction:** Store at -20°C or lower. Aliquot to avoid repeated freezing and thawing.

**MSDS:** [Download](#)

**Datasheet:** [Download](#)

### Applications

#### Sandwich ELISA (Recombinant protein)



Detection limit for recombinant GST tagged KRIT1 is 0.1 ng/ml as a capture antibody.

[Protocol Download](#)

ELISA

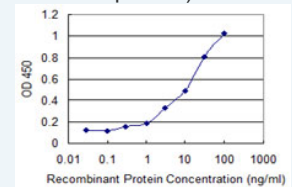
### Gene Information

**Entrez GeneID:** [889](#)

**GeneBank Accession#:** [NM\\_004912](#)

### Application Image

Sandwich ELISA (Recombinant protein)



[enlarge](#)

ELISA

**Protein** [NP\\_004903](#)

**Accession#:**

**Gene Name:** KRIT1

**Gene Alias:** CAM,CCM1

**Gene Description:** KRIT1, ankyrin repeat containing

**Omim ID:** [116860](#), [604214](#)

**Gene Ontology:** [Hyperlink](#)

**Gene Summary:** This gene encodes a protein containing four ankyrin repeats, a band 4.1/ezrin/radixin/moesin (FERM) domain, and multiple NPXY sequences. The encoded protein is localized in the nucleus and cytoplasm. It binds to integrin cytoplasmic domain-associated protein-1 alpha (ICAP1alpha), and plays a critical role in beta1-integrin-mediated cell proliferation. It associates with junction proteins and RAS-related protein 1A (Rap1A), which requires the encoded protein for maintaining the integrity of endothelial junctions. It is also a microtubule-associated protein and may play a role in microtubule targeting. Mutations in this gene result in cerebral cavernous malformations. Multiple alternatively spliced transcript variants have been found for this gene. [provided by RefSeq]

**Other Designations:** ankyrin repeat-containing protein Krit1,cerebral cavernous malformations 1,krev interaction trapped 1

#### **Related Disease**

[Hemangioma, Cavernous, Central Nervous System Tobacco Use Disorder](#)