



# SZABO SCANDIC

Part of Europa Biosite

## Produktinformation



Forschungsprodukte & Biochemikalien



Zellkultur & Verbrauchsmaterial



Diagnostik & molekulare Diagnostik



Laborgeräte & Service

Weitere Information auf den folgenden Seiten!  
See the following pages for more information!



### Lieferung & Zahlungsart

siehe unsere [Liefer- und Versandbedingungen](#)

### Zuschläge

- Mindermengenzuschlag
- Trockeneiszuschlag
- Gefahrgutzuschlag
- Expressversand

### SZABO-SCANDIC HandelsgmbH

Quellenstraße 110, A-1100 Wien

T. +43(0)1 489 3961-0

F. +43(0)1 489 3961-7

[mail@szabo-scandic.com](mailto:mail@szabo-scandic.com)

[www.szabo-scandic.com](http://www.szabo-scandic.com)

[linkedin.com/company/szaboscandic](https://www.linkedin.com/company/szaboscandic) 

## CCNA2 purified MaxPab mouse polyclonal antibody (B01P) MaxPab®

Catalog # : H00000890-B01P

規格 : [ 50 ug ]

[List All](#)

### Specification

**Product Description:** Mouse polyclonal antibody raised against a full-length human CCNA2 protein.

**Immunogen:** CCNA2 (NP\_001228.1, 1 a.a. ~ 432 a.a) full-length human protein.

**Sequence:**  
 MLGNSAPGPATREAGSALLALQQTALQEDQENINPEKAAPVQQPRTRA  
 ALAVLKSGNPRGLAQQQRPKTRRVAPLKDLPVNDEHVTVPPWKANSKQ  
 PAFTIHVDEAEKEAQKPAESQKIEREDALAFNSAISLPGPRKPLVPLDYP  
 MDGSFESPHTMDMSIVLEDEKPVSVNEVPDYHEDIHTYLREMEVKCKPKV  
 GYMKKQPDITNSMRAILVDWLVEVGEEYKLQNETLHLAVNYIDRFLSSMS  
 VLRGKLQLVGTAAMLLASKFEEIYPPEVAEFVYITDDTYTKKQVLRMEHL  
 VLKVLTFDLAAPT VNQFLTQYFLHQQPANCKVESLAMFLGELSLIDADPY  
 LKYLPSVIAGAAFHLALYTVT GQSWPESLIRKTGYTLESLKPCLMDLHQT  
 YLKAPQHAQQSIREKYKNSKYHGVSLLNPPETLNL

**Host:** Mouse

**Reactivity:** Human

**Quality Control Testing:** Antibody reactive against mammalian transfected lysate.

**Storage Buffer:** In 1x PBS, pH 7.4

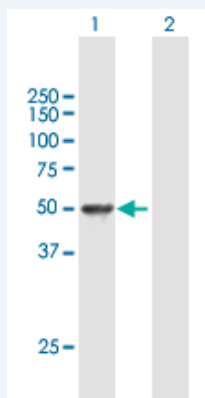
**Storage Instruction:** Store at -20°C or lower. Aliquot to avoid repeated freezing and thawing.

**MSDS:**  [Download](#)

**Datasheet:**  [Download](#)

### Applications

#### Western Blot (Transfected lysate)



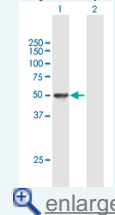
Western Blot analysis of CCNA2 expression in transfected 293T cell line (H00000890-T01) by CCNA2 MaxPab polyclonal antibody.

Lane 1: CCNA2 transfected lysate(47.52 KDa).

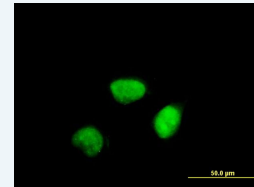
Lane 2: Non-transfected lysate.

### Application Image

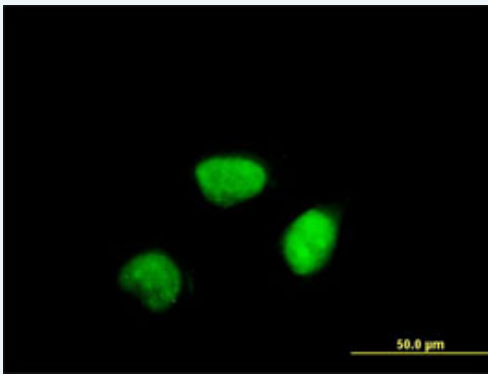
#### Western Blot (Transfected lysate)




#### Immunofluorescence



## Immunofluorescence



 enlarge this image

Immunofluorescence of purified MaxPab antibody to CCNA2 on HeLa cell. [antibody concentration 10 ug/ml]

## Gene Information

**Entrez GeneID:** [890](#)

**GeneBank Accession#:** [NM\\_001237](#)

**Protein Accession#:** [NP\\_001228.1](#)

**Gene Name:** CCNA2

**Gene Alias:** CCN1,CCNA

**Gene Description:** cyclin A2

**Omim ID:** [123835](#)

**Gene Ontology:** [Hyperlink](#)

**Gene Summary:** The protein encoded by this gene belongs to the highly conserved cyclin family, whose members are characterized by a dramatic periodicity in protein abundance through the cell cycle. Cyclins function as regulators of CDK kinases. Different cyclins exhibit distinct expression and degradation patterns which contribute to the temporal coordination of each mitotic event. In contrast to cyclin A1, which is present only in germ cells, this cyclin is expressed in all tissues tested. This cyclin binds and activates CDC2 or CDK2 kinases, and thus promotes both cell cycle G1/S and G2/M transitions. [provided by RefSeq]

**Other Designations:** cyclin A

## Gene Pathway

[Cell cycle](#)

## Related Disease

[Adenocarcinoma](#) [Esophageal Neoplasms](#) [Genetic Predisposition to Disease](#)  
[Kidney Failure](#), [Chronic Lung Neoplasms](#) [Ovarian Neoplasms](#)  
[Pulmonary Disease](#), [Chronic Obstructive](#) [Urinary Bladder Neoplasms](#) [Werner syndrome](#)

