



# SZABO SCANDIC

Part of Europa Biosite

## Produktinformation



Forschungsprodukte & Biochemikalien



Zellkultur & Verbrauchsmaterial



Diagnostik & molekulare Diagnostik



Laborgeräte & Service

Weitere Information auf den folgenden Seiten!  
See the following pages for more information!



### Lieferung & Zahlungsart

siehe unsere [Liefer- und Versandbedingungen](#)

### Zuschläge

- Mindermengenzuschlag
- Trockeneiszuschlag
- Gefahrgutzuschlag
- Expressversand

### SZABO-SCANDIC HandelsgmbH

Quellenstraße 110, A-1100 Wien

T. +43(0)1 489 3961-0

F. +43(0)1 489 3961-7

[mail@szabo-scandic.com](mailto:mail@szabo-scandic.com)

[www.szabo-scandic.com](http://www.szabo-scandic.com)

[linkedin.com/company/szaboscandic](https://www.linkedin.com/company/szaboscandic) 

## CCNA2 293T Cell Transient Overexpression Lysate(Denatured)

Catalog # : H00000890-T01

規格 : [ 100 uL ]

[List All](#)

### Specification

**Transfected Cell Line:** 293T

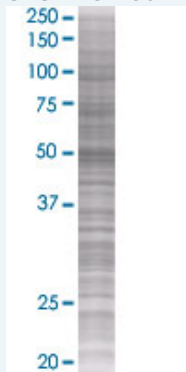
**Plasmid:** pCMV-CCNA2 full-length

**Host:** Human

**Theoretical MW (kDa):** 47.63

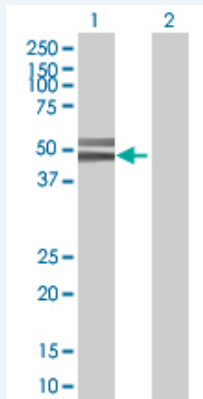
**Quality Control Testing:** Transient overexpression cell lysate was tested with Anti-CCNA2 antibody ([H00000890-B01](#)) by Western Blots.

#### SDS-PAGE Gel



CCNA2 transfected lysate.

#### Western Blot



Lane 1: CCNA2 transfected lysate ( 47.63 KDa)

Lane 2: Non-transfected lysate.

**Storage Buffer:** 1X Sample Buffer (50 mM Tris-HCl, 2% SDS, 10% glycerol, 300 mM 2-mercaptoethanol, 0.01% Bromophenol blue)

**Storage Instruction:** Store at -80°C. Aliquot to avoid repeated freezing and thawing.

**MSDS:**  [Download](#)

### Applications

## Western Blot

### Gene Information

Entrez GeneID: [890](#)

GeneBank Accession#: [NM\\_001237](#)

Protein Accession#: [NP\\_001228](#)

Gene Name: CCNA2

Gene Alias: CCN1,CCNA

Gene Description: cyclin A2

Omim ID: [123835](#)

Gene Ontology: [Hyperlink](#)

**Gene Summary:** The protein encoded by this gene belongs to the highly conserved cyclin family, whose members are characterized by a dramatic periodicity in protein abundance through the cell cycle. Cyclins function as regulators of CDK kinases. Different cyclins exhibit distinct expression and degradation patterns which contribute to the temporal coordination of each mitotic event. In contrast to cyclin A1, which is present only in germ cells, this cyclin is expressed in all tissues tested. This cyclin binds and activates CDC2 or CDK2 kinases, and thus promotes both cell cycle G1/S and G2/M transitions. [provided by RefSeq]

Other Designations: cyclin A

### Gene Pathway

[Cell cycle](#)

### Related Disease

[Adenocarcinoma](#) [Esophageal Neoplasms](#) [Genetic Predisposition to Disease](#)  
[Kidney Failure](#), [Chronic Lung Neoplasms](#) [Ovarian Neoplasms](#)  
[Pulmonary Disease](#), [Chronic Obstructive](#) [Urinary Bladder Neoplasms](#) [Werner syndrome](#)