



SZABO SCANDIC

Part of Europa Biosite

Produktinformation



Forschungsprodukte & Biochemikalien



Zellkultur & Verbrauchsmaterial



Diagnostik & molekulare Diagnostik



Laborgeräte & Service

Weitere Information auf den folgenden Seiten!
See the following pages for more information!



Lieferung & Zahlungsart

siehe unsere [Liefer- und Versandbedingungen](#)

Zuschläge

- Mindermengenzuschlag
- Trockeneiszuschlag
- Gefahrgutzuschlag
- Expressversand

SZABO-SCANDIC HandelsgmbH

Quellenstraße 110, A-1100 Wien

T. +43(0)1 489 3961-0

F. +43(0)1 489 3961-7

mail@szabo-scandic.com

www.szabo-scandic.com

[linkedin.com/company/szaboscandic](https://www.linkedin.com/company/szaboscandic) 

CCNB1 purified MaxPab rabbit polyclonal antibody (D01P) MaxPab®

Catalog # : H00000891-D01P

規格 : [100 ug]

[List All](#)

Specification

Product Description: Rabbit polyclonal antibody raised against a full-length human CCNB1 protein.

Immunogen: CCNB1 (NP_114172.1, 1 a.a. ~ 433 a.a) full-length human protein.

Sequence:
 MALRVTRNSKINAENKAKINMAGAKRVPTAPAATSKPGLRPRTALGDIGN
 KVSEQLQAKMPMKKEAKPSATGKVIDKKLPKPLEKVPMLVPVPVSEPVPE
 PEPEPEPEPVKEEKLSEPILVDTASPSMETSGCAPAEEDLCQAFSDVIL
 AVNDVDAEDGADPNLCSEYVKDIYAYLRQLEEEQAVRPKYLLGREVTGN
 MRAILIDWLQVQMKFRLLQETMYMTVSIIDRFMQNNCVPKMLQLVGV
 AMFIASKYEEMYPPEIGDFAFVTDNTYTKHQIRQMEMKILRALNFGGRPL
 PLHLRASKIGEVDVEQHTLAKYLMELTMLDYDMVHFPPSQIAAGAFCL
 ALKILDNGEWTPTLQHLYLSYTEESLLPVMQHLAKNVMVNVQGLTKHMTV
 KNKYATSKHAKISTLPQLNSALVQDLAKAVAKV

Host: Rabbit

Reactivity: Human

Quality Control Testing: Antibody reactive against mammalian transfected lysate.

Storage Buffer: In 1x PBS, pH 7.4

Storage Instruction: Store at -20°C or lower. Aliquot to avoid repeated freezing and thawing.

MSDS:  [Download](#)

Datasheet:  [Download](#)

Publication Reference

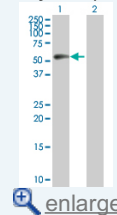
1. [An analysis of protein-protein interactions in cross-talk pathways reveals CRKL as a novel prognostic marker in hepatocellular carcinoma.](#)
 Liu CH, Chen TC, Chau GY, Jan YH, Chen CH, Hsu CN, Lin KT, Juang YL, Lu PJ, Cheng HC, Chen MH, Chang CF, Ting YS, Kao CY, Hsiao M, Huang CY. Mol Cell Proteomics. 2013 Feb 8. [Epub ahead of print]

Applications

Western Blot (Transfected lysate)

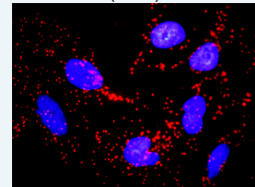
Application Image

Western Blot (Transfected lysate)



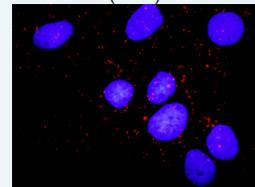
 [enlarge](#)

In situ Proximity Ligation Assay (Cell)



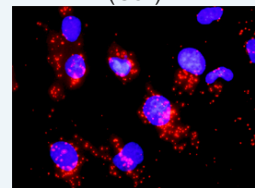
 [enlarge](#)

In situ Proximity Ligation Assay (Cell)

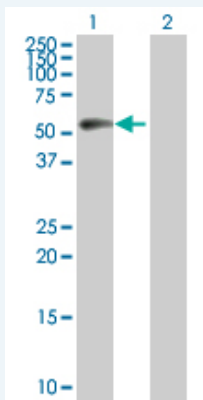


 [enlarge](#)

In situ Proximity Ligation Assay (Cell)




 [enlarge](#)

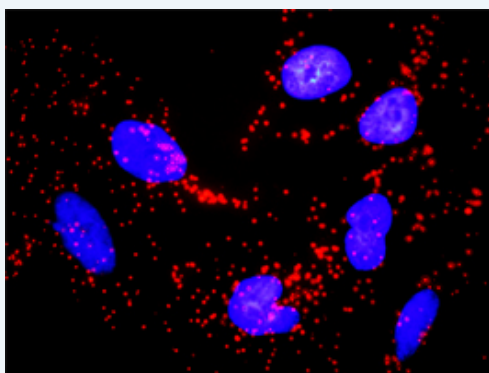


Western Blot analysis of CCNB1 expression in transfected 293T cell line ([H00000891-T01](#)) by CCNB1 MaxPab polyclonal antibody.

Lane 1: CCNB1 transfected lysate(48.30 KDa).
Lane 2: Non-transfected lysate.

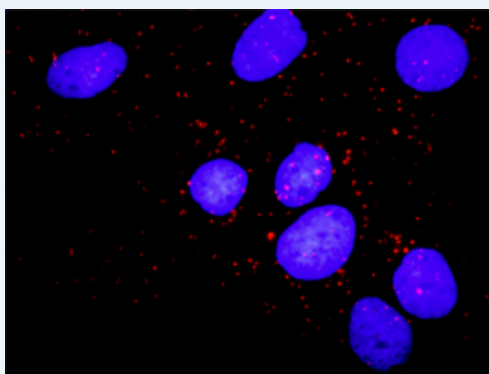
 [Protocol Download](#)

***In situ* Proximity Ligation Assay (Cell)**



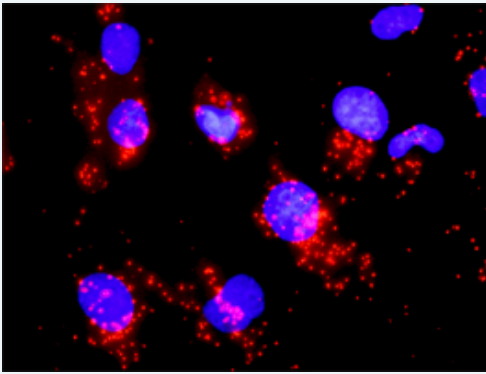
Proximity Ligation Analysis of protein-protein interactions between CCNB1 and CDKN1A. HeLa cells were stained with anti-CCNB1 rabbit purified polyclonal 1:1200 and anti-CDKN1A mouse monoclonal antibody 1:50. Each red dot represents the detection of protein-protein interaction complex, and nuclei were counterstained with DAPI (blue).

***In situ* Proximity Ligation Assay (Cell)**



Proximity Ligation Analysis of protein-protein interactions between CCNB1 and PKMYT1. Huh7 cells were stained with anti-CCNB1 rabbit purified polyclonal 1:1200 and anti-PKMYT1 mouse monoclonal antibody 1:50. Each red dot represents the detection of protein-protein interaction complex, and nuclei were counterstained with DAPI (blue).

***In situ* Proximity Ligation Assay (Cell)**



Proximity Ligation Analysis of protein-protein interactions between CCNB1 and CDC25A. Mahlavu cells were stained with anti-CCNB1 rabbit purified polyclonal 1:1200 and anti-CDC25A mouse monoclonal antibody 1:50. Each red dot represents the detection of protein-protein interaction complex, and nuclei were counterstained with DAPI (blue).

Gene Information

Entrez GeneID: [891](#)

**GeneBank
Accession#:** [NM_031966](#)

**Protein
Accession#:** [NP_114172.1](#)

Gene Name: CCNB1

Gene Alias: CCNB

**Gene
Description:** cyclin B1

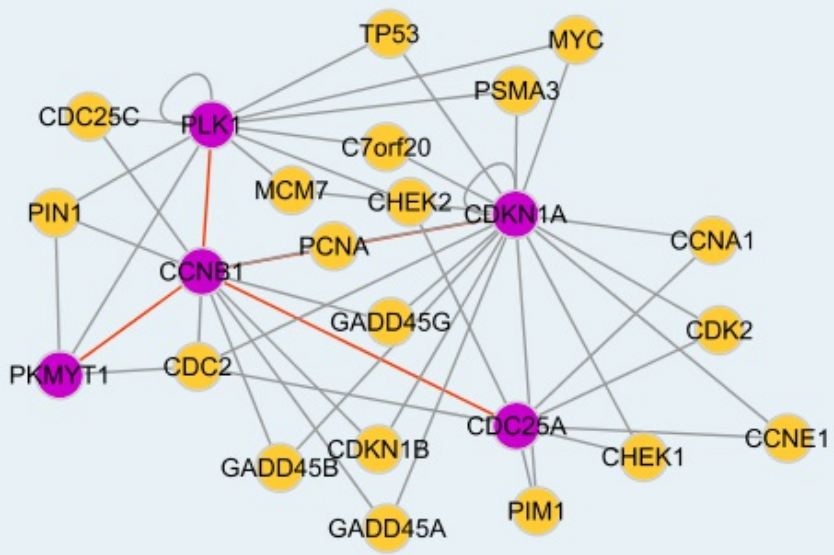
Omim ID: [123836](#)

Gene Ontology: [Hyperlink](#)

Gene Summary: The protein encoded by this gene is a regulatory protein involved in mitosis. The gene product complexes with p34(cdc2) to form the maturation-promoting factor (MPF). Two alternative transcripts have been found, a constitutively expressed transcript and a cell cycle-regulated transcript, that is expressed predominantly during G2/M phase. The different transcripts result from the use of alternate transcription initiation sites. [provided by RefSeq]

**Other
Designations:** G2/mitotic-specific cyclin B1

Interactome



Gene Pathway

[Cell cycle p53 signaling pathway](#)

Related Disease

[Adenocarcinoma Esophageal Neoplasms Genetic Predisposition to Disease](#)
[Ovarian Neoplasms](#)

[服務條款](#) | [隱私權政策](#) | [著作及商標](#) | [網站地圖](#)

©2016 亞諾法生技股份有限公司 Abnova Corporation. 版權所有.