



SZABO SCANDIC

Part of Europa Biosite

Produktinformation



Forschungsprodukte & Biochemikalien



Zellkultur & Verbrauchsmaterial



Diagnostik & molekulare Diagnostik



Laborgeräte & Service

Weitere Information auf den folgenden Seiten!
See the following pages for more information!



Lieferung & Zahlungsart

siehe unsere [Liefer- und Versandbedingungen](#)

Zuschläge

- Mindermengenzuschlag
- Trockeneiszuschlag
- Gefahrgutzuschlag
- Expressversand

SZABO-SCANDIC HandelsgmbH

Quellenstraße 110, A-1100 Wien

T. +43(0)1 489 3961-0

F. +43(0)1 489 3961-7

mail@szabo-scandic.com

www.szabo-scandic.com

[linkedin.com/company/szaboscandic](https://www.linkedin.com/company/szaboscandic) 

CCNB1 293T Cell Transient Overexpression Lysate(Denatured)

Catalog # : H00000891-T02

規格 : [100 uL]

[List All](#)

Specification

Transfected Cell Line: 293T

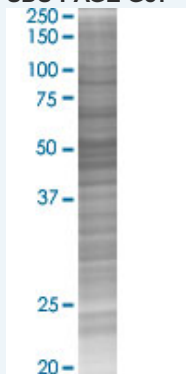
Plasmid: pCMV-CCNB1 full-length

Host: Human

Theoretical MW (kDa): 48.3

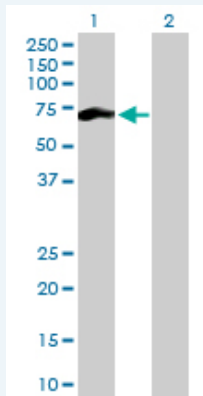
Quality Control Testing: Transient overexpression cell lysate was tested with Anti-CCNB1 antibody (H00000891-B01) by Western Blots.

SDS-PAGE Gel



CCNB1 transfected lysate.

Western Blot



Lane 1: CCNB1 transfected lysate (48.30 KDa)

Lane 2: Non-transfected lysate.

Storage Buffer: 1X Sample Buffer (50 mM Tris-HCl, 2% SDS, 10% glycerol, 300 mM 2-mercaptoethanol, 0.01% Bromophenol blue)

Storage Instruction: Store at -80°C. Aliquot to avoid repeated freezing and thawing.

MSDS:  [Download](#)

Applications

Western Blot

Gene Information

Entrez GeneID: [891](#)

GeneBank [NM_031966](#)
Accession#:

Protein [NP_114172.1](#)
Accession#:

Gene Name: CCNB1

Gene Alias: CCNB

Gene cyclin B1
Description:

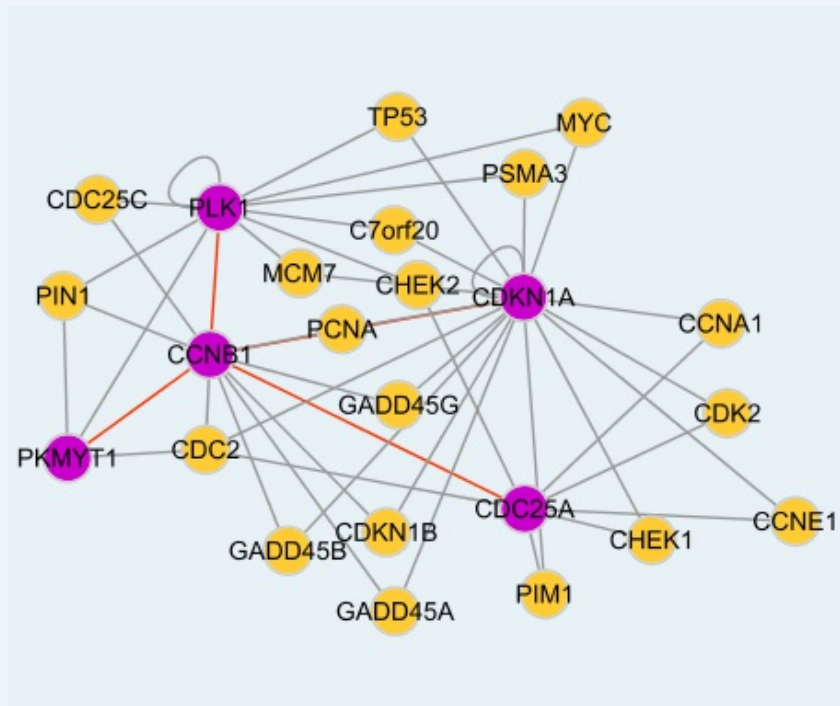
Omim ID: [123836](#)

Gene Ontology: [Hyperlink](#)

Gene Summary: The protein encoded by this gene is a regulatory protein involved in mitosis. The gene product complexes with p34(cdc2) to form the maturation-promoting factor (MPF). Two alternative transcripts have been found, a constitutively expressed transcript and a cell cycle-regulated transcript, that is expressed predominantly during G2/M phase. The different transcripts result from the use of alternate transcription initiation sites. [provided by RefSeq]

Other G2/mitotic-specific cyclin B1
Designations:

Interactome



Gene Pathway

[Cell cycle p53 signaling pathway](#)

Related Disease

[服務條款](#) | [隱私權政策](#) | [著作及商標](#) | [網站地圖](#)

©2016 亞諾法生技股份有限公司 Abnova Corporation. 版權所有.