



SZABO SCANDIC

Part of Europa Biosite

Produktinformation



Forschungsprodukte & Biochemikalien



Zellkultur & Verbrauchsmaterial



Diagnostik & molekulare Diagnostik



Laborgeräte & Service

Weitere Information auf den folgenden Seiten!
See the following pages for more information!



Lieferung & Zahlungsart

siehe unsere [Liefer- und Versandbedingungen](#)

Zuschläge

- Mindermengenzuschlag
- Trockeneiszuschlag
- Gefahrgutzuschlag
- Expressversand

SZABO-SCANDIC HandelsgmbH

Quellenstraße 110, A-1100 Wien

T. +43(0)1 489 3961-0

F. +43(0)1 489 3961-7

mail@szabo-scandic.com

www.szabo-scandic.com

[linkedin.com/company/szaboscandic](https://www.linkedin.com/company/szaboscandic) 

CCNC MaxPab mouse polyclonal antibody (B01) MaxPab®

Catalog # : H00000892-B01

規格 : [50 uL]

[List All](#)

Specification

Product Description: Mouse polyclonal antibody raised against a full-length human CCNC protein.

Immunogen: CCNC (AAH56153.1, 1 a.a. ~ 283 a.a) full-length human protein.

Sequence:
 MAGNFWQSSHYLQWLDKQDLLKERQKDLKFLSEEEYWKLQIFFTNVIQ
 ALGEHLKLRQQVIATATVYFKRFYARYSLKSIDPVLMAPTCVFLASKVEEF
 GVVSNTRLIAAATSVLKTRFSYAFPKEFPYRMNHILECEFYLLELMDCCLI
 VYHPYRPLLQYVQDMGQEDMLLPLAWRIVNDTYRTDLCLLYPPFMIALA
 CLHVACVVQKQDARQWFAELSDMEKILEIIRVILKLYEQWKNFDERKEM
 ATILSKMPKPKPPPNSEGEQGPNGSQNSSYSQS

Host: Mouse

Reactivity: Human

Quality Control Testing: Antibody reactive against mammalian transfected lysate.

Storage Buffer: No additive

Storage Instruction: Store at -20°C or lower. Aliquot to avoid repeated freezing and thawing.

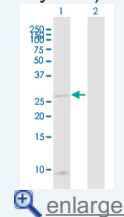
Note: For IHC and IF applications, antibody purification with Protein A will be needed prior to use.

MSDS: [Download](#)

Datasheet: [Download](#)

Application Image

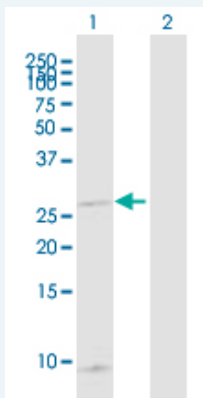
Western Blot (Transfected lysate)



[enlarge](#)

Applications

Western Blot (Transfected lysate)



Western Blot analysis of CCNC expression in transfected 293T cell line ([H00003956-T02](#)) by CCNC MaxPab polyclonal antibody.

Lane 1: CCNC transfected lysate(31.24 KDa).

Lane 2: Non-transfected lysate.

Gene Information

Entrez GeneID: [892](#)

**GeneBank
Accession#:** [BC056153.1](#)

**Protein
Accession#:** [AAH56153.1](#)

Gene Name: CCNC

Gene Alias: CycC

**Gene
Description:** cyclin C

Omim ID: [123838](#)

Gene Ontology: [Hyperlink](#)

Gene Summary: The protein encoded by this gene is a member of the cyclin family of proteins. The encoded protein interacts with cyclin-dependent kinase 8 and induces the phosphorylation of the carboxy-terminal domain of the large subunit of RNA polymerase II. The level of mRNAs for this gene peaks in the G1 phase of the cell cycle. Two transcript variants encoding different isoforms have been found for this gene. [provided by RefSeq]

**Other
Designations:** OTTHUMP00000016897
