



SZABO SCANDIC

Part of Europa Biosite

Produktinformation



Forschungsprodukte & Biochemikalien



Zellkultur & Verbrauchsmaterial



Diagnostik & molekulare Diagnostik



Laborgeräte & Service

Weitere Information auf den folgenden Seiten!
See the following pages for more information!



Lieferung & Zahlungsart

siehe unsere [Liefer- und Versandbedingungen](#)

Zuschläge

- Mindermengenzuschlag
- Trockeneiszuschlag
- Gefahrgutzuschlag
- Expressversand

SZABO-SCANDIC HandelsgmbH

Quellenstraße 110, A-1100 Wien

T. +43(0)1 489 3961-0

F. +43(0)1 489 3961-7

mail@szabo-scandic.com

www.szabo-scandic.com

[linkedin.com/company/szaboscandic](https://www.linkedin.com/company/szaboscandic) 

CCND2 polyclonal antibody (A01)

Catalog # : H00000894-A01

規格 : [50 uL]

List All

Specification

Product Description: Mouse polyclonal antibody raised against a partial recombinant CCND2.

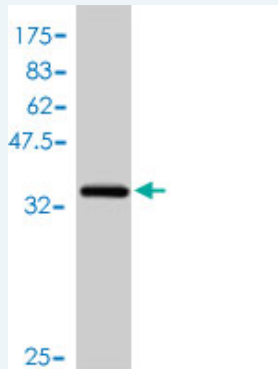
Immunogen: CCND2 (AAH10958, 190 a.a. ~ 289 a.a) partial recombinant protein with GST tag.

Sequence: TDFKFAMYPSPMIATGSVGAICGLQQDEEVSSLTCDALTELLAKITNTD
VDCLKACQEIQIEAVLLNSLQQYRQDQRDGSKSEDELDQASTPTDVRDID
L

Host: Mouse

Reactivity: Human

Quality Control Testing: Antibody Reactive Against Recombinant Protein.



Western Blot detection against Immunogen (37 KDa) .

Storage Buffer: 50 % glycerol

Storage Instruction: Store at -20°C or lower. Aliquot to avoid repeated freezing and thawing.

MSDS: [Download](#)

Datasheet: [Download](#)

Applications

Western Blot (Recombinant protein)

[Protocol Download](#)

ELISA

Gene Information

Entrez GeneID: [894](#)

GeneBank Accession#: [BC010958](#)

Application Image

Western Blot (Recombinant protein)

ELISA

Protein Accession#: [AAH10958](#)

Gene Name: CCND2

Gene Alias: KIAK0002,MGC102758

Gene Description: cyclin D2

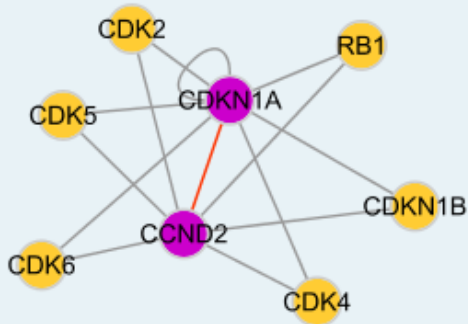
Omim ID: [123833](#)

Gene Ontology: [Hyperlink](#)

Gene Summary: The protein encoded by this gene belongs to the highly conserved cyclin family, whose members are characterized by a dramatic periodicity in protein abundance through the cell cycle. Cyclins function as regulators of CDK kinases. Different cyclins exhibit distinct expression and degradation patterns which contribute to the temporal coordination of each mitotic event. This cyclin forms a complex with and functions as a regulatory subunit of CDK4 or CDK6, whose activity is required for cell cycle G1/S transition. This protein has been shown to interact with and be involved in the phosphorylation of tumor suppressor protein Rb. Knockout studies of the homologous gene in mouse suggest the essential roles of this gene in ovarian granulosa and germ cell proliferation. High level expression of this gene was observed in ovarian and testicular tumors. [provided by RefSeq]

Other Designations: G1/S-specific cyclin D2

Interactome



Gene Pathway

[Cell cycle](#) [Focal adhesion](#) [Jak-STAT signaling pathway](#) [p53 signaling pathway](#)
[Wnt signaling pathway](#)

Related Disease

[Breast cancer](#) [Breast Neoplasms](#) [Carcinoma, Hepatocellular](#) [Diabetes Mellitus, Type 2](#)
[Genetic Predisposition to Disease](#) [Hepatitis B](#) [Kidney Failure, Chronic](#) [Liver Neoplasms](#)
[Narcolepsy](#) [Neoplasm Invasiveness](#) [Ovarian cancer](#) [Ovarian Neoplasms](#)

