



# SZABO SCANDIC

Part of Europa Biosite

## Produktinformation



Forschungsprodukte & Biochemikalien



Zellkultur & Verbrauchsmaterial



Diagnostik & molekulare Diagnostik



Laborgeräte & Service

Weitere Information auf den folgenden Seiten!  
See the following pages for more information!



### Lieferung & Zahlungsart

siehe unsere [Liefer- und Versandbedingungen](#)

### Zuschläge

- Mindermengenzuschlag
- Trockeneiszuschlag
- Gefahrgutzuschlag
- Expressversand

### SZABO-SCANDIC HandelsgmbH

Quellenstraße 110, A-1100 Wien

T. +43(0)1 489 3961-0

F. +43(0)1 489 3961-7

[mail@szabo-scandic.com](mailto:mail@szabo-scandic.com)

[www.szabo-scandic.com](http://www.szabo-scandic.com)

[linkedin.com/company/szaboscandic](https://www.linkedin.com/company/szaboscandic) 

## CCND3 purified MaxPab rabbit polyclonal antibody (D01P) MaxPab®

Catalog # : H00000896-D01P

規格 : [ 100 ug ]

[List All](#)

### Specification

**Product Description:** Rabbit polyclonal antibody raised against a full-length human CCND3 protein.

**Immunogen:** CCND3 (NP\_001751.1, 1 a.a. ~ 292 a.a) full-length human protein.

**Sequence:**  
 MELLCEGTRHAPRAGDPDLLGDQRLVLSLLRLEERYVPRASYFQCV  
 QREIKPHMRKMLAYWMLVCEEQRCSEEVFPLAMNYLDRYLSCVPTRK  
 AQLQLLGAVCMMLASKLRETTPLTIEKLCIYTDHAVSPRQLRDWEVLVLG  
 KLKWDLAAVIAHDFLAFILHRLSLPRDRQALVKKHAQTFLALCATDYTFA  
 MYPPSMIATGSIGAAVQGLGACSMGDELTELLAGITGTEVDCLRACQE  
 QIEAALRESLREASQTSSSPAPKAPRGSSSQGPSQTSTPTDVTAIHL

**Host:** Rabbit

**Reactivity:** Human

**Quality Control Testing:** Antibody reactive against mammalian transfected lysate.

**Storage Buffer:** In 1x PBS, pH 7.4

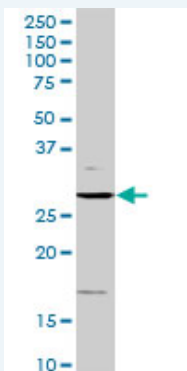
**Storage Instruction:** Store at -20°C or lower. Aliquot to avoid repeated freezing and thawing.

**MSDS:** [Download](#)

**Datasheet:** [Download](#)

### Applications

#### Western Blot (Cell lysate)



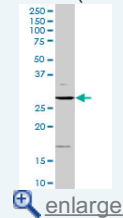
CCND3 MaxPab rabbit polyclonal antibody. Western Blot analysis of CCND3 expression in Jurkat.

[Protocol Download](#)

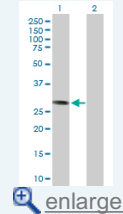
#### Western Blot (Transfected lysate)

### Application Image

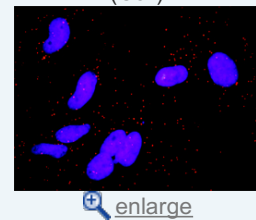
#### Western Blot (Cell lysate)

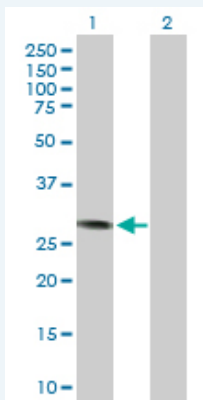


#### Western Blot (Transfected lysate)



#### In situ Proximity Ligation Assay (Cell)



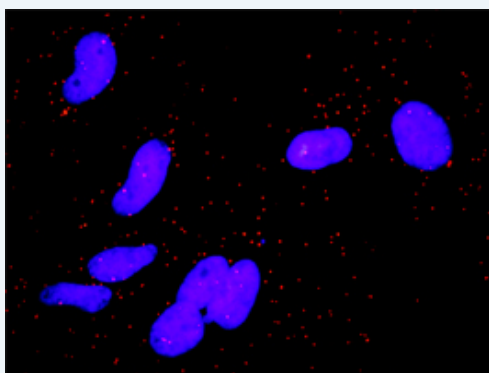


Western Blot analysis of CCND3 expression in transfected 293T cell line ([H00000896-T01](#)) by CCND3 MaxPab polyclonal antibody.

Lane 1: CCND3 transfected lysate(32.50 KDa).  
Lane 2: Non-transfected lysate.

Protocol Download

### *In situ* Proximity Ligation Assay (Cell)



Proximity Ligation Analysis of protein-protein interactions between CCND3 and AREG. HeLa cells were stained with anti-CCND3 rabbit purified polyclonal 1:1200 and anti-AREG mouse monoclonal antibody 1:50. Each red dot represents the detection of protein-protein interaction complex, and nuclei were counterstained with DAPI (blue).

### Gene Information

Entrez GeneID: [896](#)

GeneBank [NM\\_001760](#)  
Accession#:

Protein [NP\\_001751.1](#)  
Accession#:

Gene Name: CCND3

Gene Alias: -

Gene Description: cyclin D3

Omim ID: [123834](#)

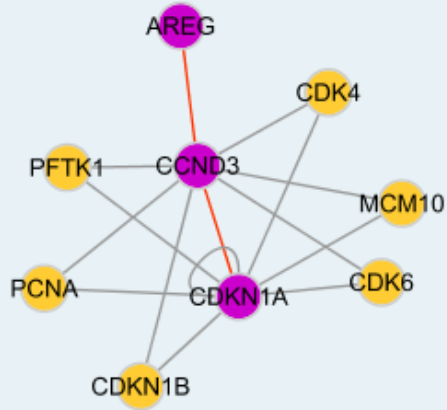
Gene Ontology: [Hyperlink](#)

**Gene Summary:** The protein encoded by this gene belongs to the highly conserved cyclin family, whose members are characterized by a dramatic periodicity in protein abundance through the cell cycle. Cyclins function as regulators of CDK kinases. Different cyclins exhibit distinct expression and degradation patterns which contribute to the temporal coordination of each mitotic event. This cyclin forms a complex with and functions as a regulatory subunit of CDK4 or CDK6, whose activity is

required for cell cycle G1/S transition. This protein has been shown to interact with and be involved in the phosphorylation of tumor suppressor protein Rb. The CDK4 activity associated with this cyclin was reported to be necessary for cell cycle progression through G2 phase into mitosis after UV radiation. Several transcript variants encoding different isoforms have been found for this gene. [provided by RefSeq]

**Other Designations:** D3-type cyclin,G1/S-specific cyclin D3,OTTHUMP00000016390

### Interactome



### Gene Pathway

[Cell cycle](#) [Focal adhesion](#) [Jak-STAT signaling pathway](#) [p53 signaling pathway](#) [Wnt signaling pathway](#)

### Related Disease

[Adenocarcinoma](#) [Alzheimer Disease](#) [Alzheimer disease](#) [Breast cancer](#) [Breast Neoplasms](#) [Cerebral Amyloid Angiopathy](#) [Esophageal Neoplasms](#) [Genetic Predisposition to Disease](#) [Kidney Failure, Chronic](#) [Lung Neoplasms](#) [Neoplasm Invasiveness](#) [Neuroblastoma](#) [Ovarian cancer](#) [Ovarian Neoplasms](#) [Pulmonary Disease, Chronic Obstructive](#) [Urinary Bladder Neoplasms](#) [Werner syndrome](#)

[服務條款](#) | [隱私權政策](#) | [著作及商標](#) | [網站地圖](#)

©2016 亞諾法生技股份有限公司 Abnova Corporation. 版權所有.