



SZABO SCANDIC

Part of Europa Biosite

Produktinformation



Forschungsprodukte & Biochemikalien



Zellkultur & Verbrauchsmaterial



Diagnostik & molekulare Diagnostik



Laborgeräte & Service

Weitere Information auf den folgenden Seiten!
See the following pages for more information!



Lieferung & Zahlungsart

siehe unsere [Liefer- und Versandbedingungen](#)

Zuschläge

- Mindermengenzuschlag
- Trockeneiszuschlag
- Gefahrgutzuschlag
- Expressversand

SZABO-SCANDIC HandelsgmbH

Quellenstraße 110, A-1100 Wien

T. +43(0)1 489 3961-0

F. +43(0)1 489 3961-7

mail@szabo-scandic.com

www.szabo-scandic.com

[linkedin.com/company/szaboscandic](https://www.linkedin.com/company/szaboscandic) 



CCNE1 purified MaxPab mouse polyclonal antibody (B03P) MaxPab®

Catalog # : H00000898-B03P

規格 : [50 ug]

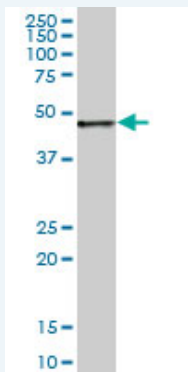
[List All](#)

Specification


Product Description:	Mouse polyclonal antibody raised against a full-length human CCNE1 protein.
Immunogen:	CCNE1 (NP_001229.1, 1 a.a. ~ 410 a.a) full-length human protein.
Sequence:	MPRERRERDAKERDTMKEDGGAEFSARSRKRKANVTVFLQDPDEEMA KIDRTARDQCGSQPWDNNAVCADPCSLIPTPKEDDDRVPNSTCKPRII APSRGSPPLVLSWANREEVWKIMLNKEKTYLRDQHFLEQHPLLQPKMRA ILLDWLMEVCEVYKLRHRETFYLAQDFFDRYMATQENVVKTLLQLIGISLF IAAKLEEIYPPKLHQFAYVTDGACSGDEILTMELMIMKALKWRLSPLTIVS WLVNYMQVAYLNDLHEVLLPQYPQQIFQIAELLDLCVLDVDCLEFPYGIL AASALYHFSSELMLQKVSQYQWCDIENCVKWMVPFAMVIRETGSSKLNK FRGVADEDAHNIQTHRDSLDDKARAKKAMLSEQNRASPLPSGLLTPP QSGKKQSSGPEMA
Host:	Mouse
Reactivity:	Human
Quality Control Testing:	Antibody reactive against mammalian transfected lysate.
Storage Buffer:	In 1x PBS, pH 7.4
Storage Instruction:	Store at -20°C or lower. Aliquot to avoid repeated freezing and thawing.
MSDS:	 Download
Datasheet:	 Download

Applications

Western Blot (Tissue lysate)



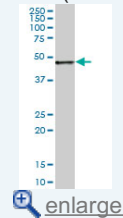
CCNE1 MaxPab polyclonal antibody. Western Blot analysis of CCNE1 expression in human colon.


 [Protocol Download](#)

Western Blot (Transfected lysate)

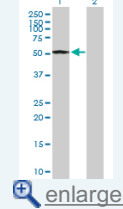
Application Image


Western Blot (Tissue lysate)



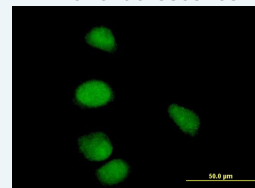
 [enlarge](#)

Western Blot (Transfected lysate)

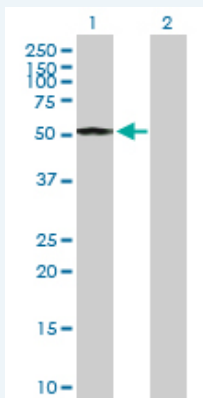


 [enlarge](#)

Immunofluorescence



 [enlarge](#)

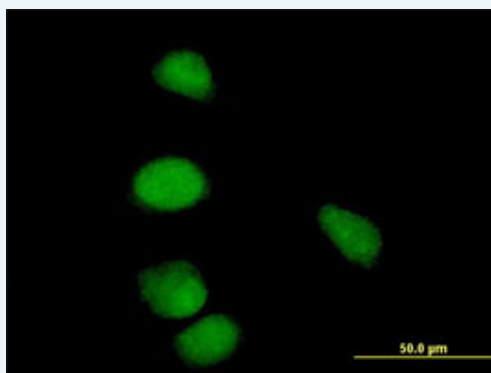


Western Blot analysis of CCNE1 expression in transfected 293T cell line ([H00000898-T02](#)) by CCNE1 MaxPab polyclonal antibody.

Lane 1: CCNE1 transfected lysate(45.1 KDa).
Lane 2: Non-transfected lysate.

[Protocol Download](#)

Immunofluorescence



enlarge this image

Immunofluorescence of purified MaxPab antibody to CCNE1 on HeLa cell. [antibody concentration 10 ug/ml]

[Protocol Download](#)

Gene Information

Entrez GeneID: [898](#)

GeneBank [NM_001238.1](#)
Accession#:

Protein [NP_001229.1](#)
Accession#:

Gene Name: CCNE1

Gene Alias: CCNE

Gene cyclin E1
Description:

Omim ID: [123837](#)

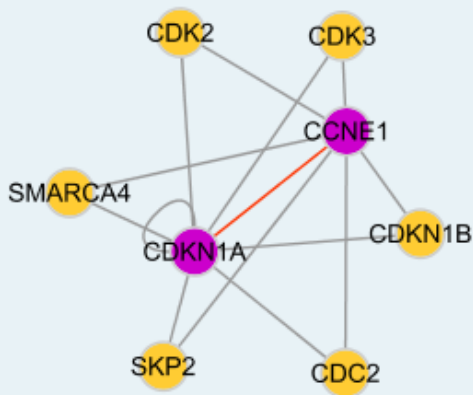
Gene Ontology: [Hyperlink](#)

Gene Summary: The protein encoded by this gene belongs to the highly conserved cyclin family, whose members are characterized by a dramatic periodicity in protein abundance through the cell cycle. Cyclins function as regulators of CDK kinases. Different cyclins exhibit distinct expression and degradation patterns which contribute to the temporal coordination of each mitotic event. This cyclin forms a complex with and functions as a regulatory subunit of CDK2, whose activity is required for cell cycle G1/S transition. This protein accumulates at the G1-S phase

boundary and is degraded as cells progress through S phase. Overexpression of this gene has been observed in many tumors, which results in chromosome instability, and thus may contribute to tumorigenesis. This protein was found to associate with, and be involved in, the phosphorylation of NPAT protein (nuclear protein mapped to the ATM locus), which participates in cell-cycle regulated histone gene expression and plays a critical role in promoting cell-cycle progression in the absence of pRB. Two alternatively spliced transcript variants of this gene, which encode distinct isoforms, have been described. Two additional splice variants were reported but detailed nucleotide sequence information is not yet available. [provided by RefSeq]

Other Designations: cyclin Es,cyclin Et

Interactome



Gene Pathway

[Cell cycle p53 signaling pathway](#) [Pathways in cancer](#) [Prostate cancer](#)
[Small cell lung cancer](#)

Related Disease

[Adenocarcinoma](#) [Breast cancer](#) [Breast Neoplasms](#) [Disease Progression](#)
[Esophageal Neoplasms](#) [Genetic Predisposition to Disease](#) [Neoplasm Invasiveness](#)
[Neoplasms, Glandular and Epithelial](#) [Ovarian cancer](#) [Ovarian Neoplasms](#)
[Urinary Bladder Neoplasms](#)

[服務條款](#) | [隱私權政策](#) | [著作及商標](#) | [網站地圖](#)

©2016 亞諾法生技股份有限公司 Abnova Corporation. 版權所有.