



# SZABO SCANDIC

Part of Europa Biosite

## Produktinformation



Forschungsprodukte & Biochemikalien



Zellkultur & Verbrauchsmaterial



Diagnostik & molekulare Diagnostik



Laborgeräte & Service

Weitere Information auf den folgenden Seiten!  
See the following pages for more information!



### Lieferung & Zahlungsart

siehe unsere [Liefer- und Versandbedingungen](#)

### Zuschläge

- Mindermengenzuschlag
- Trockeneiszuschlag
- Gefahrgutzuschlag
- Expressversand

### SZABO-SCANDIC HandelsgmbH

Quellenstraße 110, A-1100 Wien

T. +43(0)1 489 3961-0

F. +43(0)1 489 3961-7

[mail@szabo-scandic.com](mailto:mail@szabo-scandic.com)

[www.szabo-scandic.com](http://www.szabo-scandic.com)

[linkedin.com/company/szaboscandic](https://www.linkedin.com/company/szaboscandic) 

## CCNE1 purified MaxPab rabbit polyclonal antibody (D01P) MaxPab®

Catalog # : H00000898-D01P

規格 : [ 100 ug ]

[List All](#)

### Specification

**Product Description:** Rabbit polyclonal antibody raised against a full-length human CCNE1 protein.

**Immunogen:** CCNE1 (NP\_001229.1, 1 a.a. ~ 410 a.a) full-length human protein.

**Sequence:**  
 MPRERRERDAKERDTMKEDGGAEFSARSRKRKANVTVFLQDPDEEMA  
 KIDRTARDQCGSQPWDNNAVCADPCSLIPTPKEDDDRVPNSTCKPRII  
 APSRGSPVLSWANREEVWKIMLNKEKTYLRDQHFLEQHPLLQPKMRA  
 ILLDWLMEVCEVYKLRHRETFYLAQDFFDHYMATQENVVKTLLQLIGISLF  
 IAAKLEEIYPPKLHQFAYVTDGACSGDEILTMELMIMKALKWRLSPLTMS  
 WLVNYMQVAYLNDLHEVLLPQYPQQIFQIAELLDLCVLDVDCLEFPYGIL  
 AASALYHFSSSELMQKVSGYQWCDIENCVKWMVPFAMVIRETGSSKLNH  
 FRGVADEDAHNIQTHRDSLDDKARAKKAMLSEQNRASPLPSGLLTPP  
 QSGKKQSSGPEMA

**Host:** Rabbit

**Reactivity:** Human, Mouse

**Quality Control Testing:** Antibody reactive against mammalian transfected lysate.

**Storage Buffer:** In 1x PBS, pH 7.4

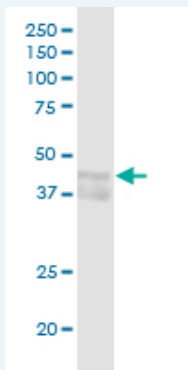
**Storage Instruction:** Store at -20°C or lower. Aliquot to avoid repeated freezing and thawing.

**MSDS:** [Download](#)

**Datasheet:** [Download](#)

### Applications

#### Western Blot (Tissue lysate)



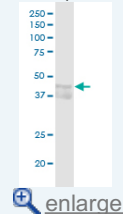
CCNE1 MaxPab rabbit polyclonal antibody. Western Blot analysis of CCNE1 expression in mouse liver.

[Protocol Download](#)

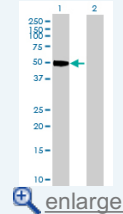
#### Western Blot (Transfected lysate)

### Application Image

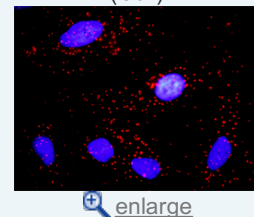
#### Western Blot (Tissue lysate)

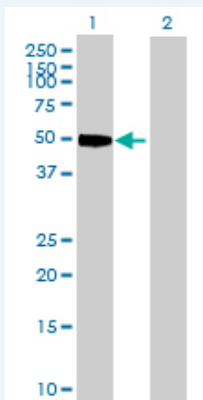


#### Western Blot (Transfected lysate)



#### In situ Proximity Ligation Assay (Cell)



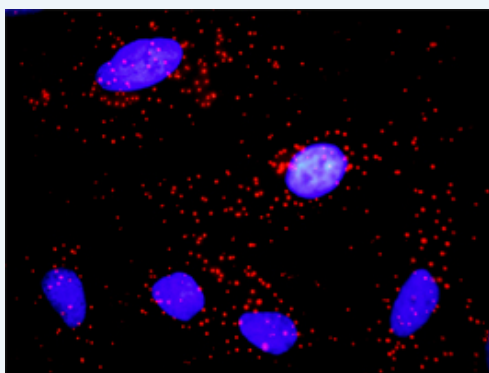


Western Blot analysis of CCNE1 expression in transfected 293T cell line ([H00000898-T03](#)) by CCNE1 MaxPab polyclonal antibody.

Lane 1: CCNE1 transfected lysate(47.10 KDa).  
Lane 2: Non-transfected lysate.

Protocol Download

### *In situ* Proximity Ligation Assay (Cell)



Proximity Ligation Analysis of protein-protein interactions between CCNE1 and CDKN1A. HeLa cells were stained with anti-CCNE1 rabbit purified polyclonal 1:1200 and anti-CDKN1A mouse monoclonal antibody 1:50. Each red dot represents the detection of protein-protein interaction complex, and nuclei were counterstained with DAPI (blue).

### Gene Information

Entrez GeneID: [898](#)

GeneBank [NM\\_001238](#)  
Accession#:

Protein [NP\\_001229.1](#)  
Accession#:

Gene Name: CCNE1

Gene Alias: CCNE

Gene Description: cyclin E1

Omim ID: [123837](#)

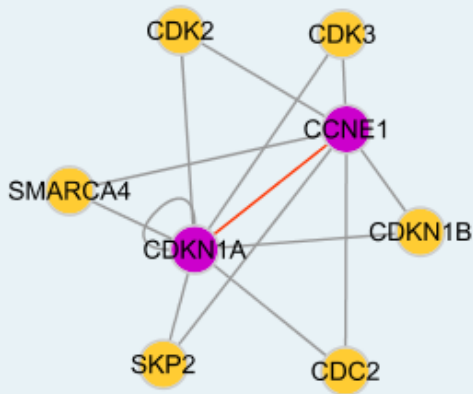
Gene Ontology: [Hyperlink](#)

**Gene Summary:** The protein encoded by this gene belongs to the highly conserved cyclin family, whose members are characterized by a dramatic periodicity in protein abundance through the cell cycle. Cyclins function as regulators of CDK kinases. Different cyclins exhibit distinct expression and degradation patterns which contribute to the temporal coordination of each mitotic event. This cyclin forms a complex with and functions as a regulatory subunit of CDK2, whose activity is required for

cell cycle G1/S transition. This protein accumulates at the G1-S phase boundary and is degraded as cells progress through S phase. Overexpression of this gene has been observed in many tumors, which results in chromosome instability, and thus may contribute to tumorigenesis. This protein was found to associate with, and be involved in, the phosphorylation of NPAT protein (nuclear protein mapped to the ATM locus), which participates in cell-cycle regulated histone gene expression and plays a critical role in promoting cell-cycle progression in the absence of pRB. Two alternatively spliced transcript variants of this gene, which encode distinct isoforms, have been described. Two additional splice variants were reported but detailed nucleotide sequence information is not yet available. [provided by RefSeq]

**Other** cyclin Es,cyclin Et  
**Designations:**

### Interactome



### Gene Pathway

[Cell cycle p53 signaling pathway](#) [Pathways in cancer](#) [Prostate cancer](#)  
[Small cell lung cancer](#)

### Related Disease

[Adenocarcinoma](#) [Breast cancer](#) [Breast Neoplasms](#) [Disease Progression](#)  
[Esophageal Neoplasms](#) [Genetic Predisposition to Disease](#) [Neoplasm Invasiveness](#)  
[Neoplasms, Glandular and Epithelial](#) [Ovarian cancer](#) [Ovarian Neoplasms](#)  
[Urinary Bladder Neoplasms](#)

[服務條款](#) | [隱私權政策](#) | [著作及商標](#) | [網站地圖](#)

©2016 亞諾法生技股份有限公司 Abnova Corporation. 版權所有.