



# SZABO SCANDIC

Part of Europa Biosite

## Produktinformation



Forschungsprodukte & Biochemikalien



Zellkultur & Verbrauchsmaterial



Diagnostik & molekulare Diagnostik



Laborgeräte & Service

Weitere Information auf den folgenden Seiten!  
See the following pages for more information!



### Lieferung & Zahlungsart

siehe unsere [Liefer- und Versandbedingungen](#)

### Zuschläge

- Mindermengenzuschlag
- Trockeneiszuschlag
- Gefahrgutzuschlag
- Expressversand

### SZABO-SCANDIC HandelsgmbH

Quellenstraße 110, A-1100 Wien

T. +43(0)1 489 3961-0

F. +43(0)1 489 3961-7

[mail@szabo-scandic.com](mailto:mail@szabo-scandic.com)

[www.szabo-scandic.com](http://www.szabo-scandic.com)

[linkedin.com/company/szaboscandic](https://www.linkedin.com/company/szaboscandic) 

## CD1A purified MaxPab mouse polyclonal antibody (B01P) MaxPab®

Catalog # : H00000909-B01P

規格 : [ 50 ug ]

[List All](#)

### Specification

**Product Description:** Mouse polyclonal antibody raised against a full-length human CD1A protein.

**Immunogen:** CD1A (ABM85452.1, 1 a.a. ~ 311 a.a) full-length human protein.

**Sequence:**  
 MWNLKEPLSFHVIWIASFYNHWSKQNLVSGWLSDLQTHTWDSNSSTIV  
 FLWPWSRGNF SNEEWKELET LFRIRTIRSFEGIRRYAHELQFEYPFEIQV  
 TGGCELHSGKVSFSLQLAYQGSDFVSFQNSWLPYPVAGNMAKHFC  
 KVLNQNQHENDITHNLLSDTCPRFILGLLDAGKAHLQRQVKPEAWLSHGP  
 SPGPGHLQLVCHVSGFYKPVWMMWRGEQEQQGTQRGDILPSADG  
 TWYLRATLEVAAGEAADLSCRVKHSSLEGQDIVLYWEHHSSVGFILAVIV  
 PLLLLIGLALWFRKRCFC

**Host:** Mouse

**Reactivity:** Human

**Quality Control Testing:** Antibody reactive against mammalian transfected lysate.

**Storage Buffer:** In 1x PBS, pH 7.4

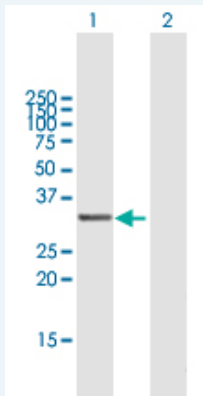
**Storage Instruction:** Store at -20°C or lower. Aliquot to avoid repeated freezing and thawing.

**MSDS:**  [Download](#)

**Datasheet:**  [Download](#)

### Applications


#### Western Blot (Transfected lysate)



Western Blot analysis of CD1A expression in transfected 293T cell line (H00000909-T01) by CD1A MaxPab polyclonal antibody.

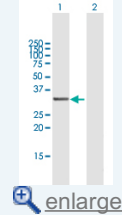
Lane 1: CD1A transfected lysate(34.21 KDa).


Lane 2: Non-transfected lysate.

 [Protocol Download](#)

### Application Image

Western Blot (Transfected lysate)



 [enlarge](#)

## Gene Information

---

**Entrez GeneID:** [909](#)

---

**GeneBank  
Accession#:** [DQ894526.2](#)

---

**Protein  
Accession#:** [ABM85452.1](#)

---

**Gene Name:** CD1A

---

**Gene Alias:** CD1,FCB6,HTA1,R4,T6

---

**Gene  
Description:** CD1a molecule

---

**Omim ID:** [188370](#)

---

**Gene Ontology:** [Hyperlink](#)

---

**Gene Summary:** This gene encodes a member of the CD1 family of transmembrane glycoproteins, which are structurally related to the major histocompatibility complex (MHC) proteins and form heterodimers with beta-2-microglobulin. The CD1 proteins mediate the presentation of primarily lipid and glycolipid antigens of self or microbial origin to T cells. The human genome contains five CD1 family genes organized in a cluster on chromosome 1. The CD1 family members are thought to differ in their cellular localization and specificity for particular lipid ligands. The protein encoded by this gene localizes to the plasma membrane and to recycling vesicles of the early endocytic system. Alternatively spliced transcript variants have been observed, but their biological validity has not been determined. [provided by RefSeq]

---

**Other  
Designations:** CD1A antigen,CD1A antigen, a polypeptide,OTTHUMP00000018907,T-cell surface antigen T6/Leu-6,T-cell surface glycoprotein CD1a,cluster of differentiation 1 A,cortical thymocyte antigen CD1A,differentiation antigen CD1-alpha-3,epidermal dendritic cell marker

---

## Gene Pathway

---

[Hematopoietic cell lineage](#)

## Related Disease

---

[Campylobacter Infections](#) [Genetic Predisposition to Disease](#) [Guillain-Barre Syndrome](#)  
[Lung Diseases](#) [Mycobacterium Infections](#) [Polyradiculoneuropathy](#)  
[Polyradiculoneuropathy](#), [Chronic Inflammatory Demyelinating](#)

---

[服務條款](#) | [隱私權政策](#) | [著作及商標](#) | [網站地圖](#)

©2016 亞諾法生技股份有限公司 Abnova Corporation. 版權所有.