



SZABO SCANDIC

Part of Europa Biosite

Produktinformation



Forschungsprodukte & Biochemikalien



Zellkultur & Verbrauchsmaterial



Diagnostik & molekulare Diagnostik



Laborgeräte & Service

Weitere Information auf den folgenden Seiten!
See the following pages for more information!



Lieferung & Zahlungsart

siehe unsere [Liefer- und Versandbedingungen](#)

Zuschläge

- Mindermengenzuschlag
- Trockeneiszuschlag
- Gefahrgutzuschlag
- Expressversand

SZABO-SCANDIC HandelsgmbH

Quellenstraße 110, A-1100 Wien

T. +43(0)1 489 3961-0

F. +43(0)1 489 3961-7

mail@szabo-scandic.com

www.szabo-scandic.com

[linkedin.com/company/szaboscandic](https://www.linkedin.com/company/szaboscandic) 

CD1B monoclonal antibody (M06), clone 2E4

Catalog # : H00000910-M06

規格 : [100 ug]

[List All](#)

Specification

Product Description: Mouse monoclonal antibody raised against a partial recombinant CD1B.

Immunogen: CD1B (NP_001755.1, 19 a.a. ~ 110 a.a) partial recombinant protein with GST tag. MW of the GST tag alone is 26 KDa.

Sequence: EHAFQGPTSFHVIQTSSFTNSTWAQTQGSGWLDDLQIHGWSDSGTAI
FLKPWSKGNFSDKEVALEEIFRVYIFGFAREVQDFAGDFQMKY

Host: Mouse

Reactivity: Human

Isotype: IgG2a Kappa

Quality Control Testing: Antibody Reactive Against Recombinant Protein.

Storage Buffer: In 1x PBS, pH 7.4

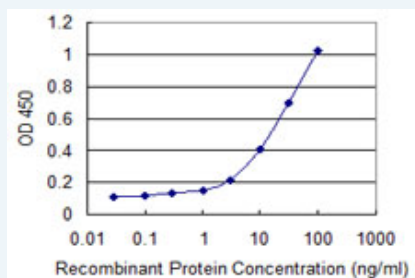
Storage Instruction: Store at -20°C or lower. Aliquot to avoid repeated freezing and thawing.

MSDS: [Download](#)

Datasheet: [Download](#)

Applications

Sandwich ELISA (Recombinant protein)



Detection limit for recombinant GST tagged CD1B is 0.3 ng/ml as a capture antibody.

[Protocol Download](#)

ELISA

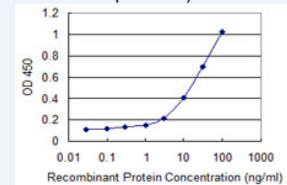
Gene Information

Entrez GeneID: [910](#)

GeneBank Accession#: [NM_001764](#)

Application Image

Sandwich ELISA (Recombinant protein)



[enlarge](#)

ELISA

Protein [NP_001755.1](#)

Accession#:

Gene Name: CD1B

Gene Alias: CD1,CD1A,MGC125990,MGC125991,R1

Gene CD1b molecule

Description:

Omim ID: [188360](#)

Gene Ontology: [Hyperlink](#)

Gene Summary: This gene encodes a member of the CD1 family of transmembrane glycoproteins, which are structurally related to the major histocompatibility complex (MHC) proteins and form heterodimers with beta-2-microglobulin. The CD1 proteins mediate the presentation of primarily lipid and glycolipid antigens of self or microbial origin to T cells. The human genome contains five CD1 family genes organized in a cluster on chromosome 1. The CD1 family members are thought to differ in their cellular localization and specificity for particular lipid ligands. The protein encoded by this gene localizes to late endosomes and lysosomes via a tyrosine-based motif in the cytoplasmic tail, and requires vesicular acidification to bind lipid antigens. [provided by RefSeq]

Other Designations: CD1B antigen,CD1B antigen, b polypeptide,OTTHUMP00000018908,T-cell surface glycoprotein CD1b,cortical thymocyte antigen CD1B,differentiation antigen CD1-alpha-3

Gene Pathway

[Hematopoietic cell lineage](#)

Related Disease

[Lung Diseases](#) [Mycobacterium Infections](#)

[服務條款](#) | [隱私權政策](#) | [著作及商標](#) | [網站地圖](#)

©2016 亞諾法生技股份有限公司 Abnova Corporation. 版權所有.