



SZABO SCANDIC

Part of Europa Biosite

Produktinformation



Forschungsprodukte & Biochemikalien



Zellkultur & Verbrauchsmaterial



Diagnostik & molekulare Diagnostik



Laborgeräte & Service

Weitere Information auf den folgenden Seiten!
See the following pages for more information!



Lieferung & Zahlungsart

siehe unsere [Liefer- und Versandbedingungen](#)

Zuschläge

- Mindermengenzuschlag
- Trockeneiszuschlag
- Gefahrgutzuschlag
- Expressversand

SZABO-SCANDIC HandelsgmbH

Quellenstraße 110, A-1100 Wien

T. +43(0)1 489 3961-0

F. +43(0)1 489 3961-7

mail@szabo-scandic.com

www.szabo-scandic.com

[linkedin.com/company/szaboscandic](https://www.linkedin.com/company/szaboscandic) 

CD1C monoclonal antibody (M02), clone 4B11

Catalog # : H00000911-M02

規格 : [100 ug]

[List All](#)

Specification

Product Description: Mouse monoclonal antibody raised against a partial recombinant CD1C.

Immunogen: CD1C (NP_001756, 77 a.a. ~ 185 a.a) partial recombinant protein with GST tag. MW of the GST tag alone is 26 KDa.

Sequence: SNEELSDLELLFRFYLFGLTREIQDHASQDYKYPFEVQVKAGCELHSG
KSPEGFFQVAFNGLDLLSFQNTTWVSPGCGSLAQSVCHLLNHQYEGV
TETVYNLIRSTC

Host: Mouse

Reactivity: Human

Isotype: IgG2a Kappa

Quality Control Testing: Antibody Reactive Against Recombinant Protein.

Storage Buffer: In 1x PBS, pH 7.4

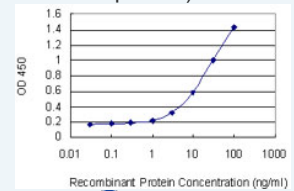
Storage Instruction: Store at -20°C or lower. Aliquot to avoid repeated freezing and thawing.


MSDS:  [Download](#)

Datasheet:  [Download](#)

Application Image

Sandwich ELISA (Recombinant protein)

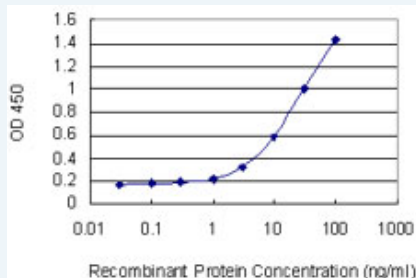


 [enlarge](#)

ELISA

Applications

Sandwich ELISA (Recombinant protein)



Detection limit for recombinant GST tagged CD1C is 0.3 ng/ml as a capture antibody.

 [Protocol Download](#)

ELISA

Gene Information

Entrez GeneID: [911](#)

GeneBank Accession#: [NM_001765](#)

Protein Accession#: [NP_001756](#)

Gene Name: CD1C

Gene Alias: BDCA1,CD1,CD1A,R7

Gene Description: CD1c molecule

Omim ID: [188340](#)

Gene Ontology: [Hyperlink](#)

Gene Summary: This gene encodes a member of the CD1 family of transmembrane glycoproteins, which are structurally related to the major histocompatibility complex (MHC) proteins and form heterodimers with beta-2-microglobulin. The CD1 proteins mediate the presentation of primarily lipid and glycolipid antigens of self or microbial origin to T cells. The human genome contains five CD1 family genes organized in a cluster on chromosome 1. The CD1 family members are thought to differ in their cellular localization and specificity for particular lipid ligands. The protein encoded by this gene is broadly distributed throughout the endocytic system via a tyrosine-based motif in the cytoplasmic tail. Alternatively spliced transcript variants of this gene have been observed, but their full-length nature is not known. [provided by RefSeq]

Other Designations: CD1C antigen,CD1C antigen, c polypeptide,OTTHUMP00000018909,T-cell surface glycoprotein CD1c,cortical thymocyte antigen CD1C,differentiation antigen CD1-alpha-3

Gene Pathway

[Hematopoietic cell lineage](#)

Related Disease

[Lung Diseases](#) [Mycobacterium Infections](#)