



# SZABO SCANDIC

Part of Europa Biosite

## Produktinformation



Forschungsprodukte & Biochemikalien



Zellkultur & Verbrauchsmaterial



Diagnostik & molekulare Diagnostik



Laborgeräte & Service

Weitere Information auf den folgenden Seiten!  
See the following pages for more information!



### Lieferung & Zahlungsart

siehe unsere [Liefer- und Versandbedingungen](#)

### Zuschläge

- Mindermengenzuschlag
- Trockeneiszuschlag
- Gefahrgutzuschlag
- Expressversand

### SZABO-SCANDIC HandelsgmbH

Quellenstraße 110, A-1100 Wien

T. +43(0)1 489 3961-0

F. +43(0)1 489 3961-7

[mail@szabo-scandic.com](mailto:mail@szabo-scandic.com)

[www.szabo-scandic.com](http://www.szabo-scandic.com)

[linkedin.com/company/szaboscandic](https://www.linkedin.com/company/szaboscandic) 


## CD1D MaxPab mouse polyclonal antibody (B01) MaxPab®

Catalog # : H00000912-B01

規格 : [ 50 uL ]

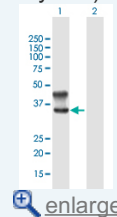
[List All](#)


### Specification

<b>Product Description:</b>	Mouse polyclonal antibody raised against a full-length human CD1D protein.
<b>Immunogen:</b>	CD1D (AAH27926.1, 1 a.a. ~ 335 a.a) full-length human protein.
<b>Sequence:</b>	MGCLLFLLWALLQAWGSAEVPQRLFPLRCLQISSFANSSWTRTDGLA WLGELQTHSWSNDSDTVRSCLKPWSQGTFSQQWETLQHIFRVYRSSF TRDVKEFAKMLRLSYPLELQVSAGCEVHPGNASNNFFHVAFQKDLISF QGTSWEPTQEAPLWNLAIQVLNQDKWTRETVQWLLNGTCPQFVSGL LESGKSELKKQVKPAWLSRGPSPGPRLLLVCHVSGFYKPKVWVKW MRGEQEQQGTQPGDILPNADETWYLRATLDVWAGEAAGLSCRVKHSSL EGQDIVLYWGGSYTSMGLIALAVLACLLFLLVGFTRFKRQTSYQGVL
<b>Host:</b>	Mouse
<b>Reactivity:</b>	Human
<b>Quality Control Testing:</b>	Antibody reactive against mammalian transfected lysate.
<b>Storage Buffer:</b>	No additive
<b>Storage Instruction:</b>	Store at -20°C or lower. Aliquot to avoid repeated freezing and thawing.
<b>Note:</b>	For IHC and IF applications, antibody purification with Protein A will be needed prior to use.
<b>Datasheet:</b>	 <a href="#">Download</a>

### Application Image

Western Blot (Transfected lysate)



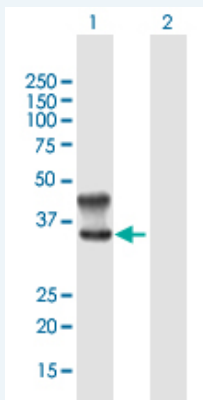
 [enlarge](#)

### Publication Reference

- [CD1d-dependent, iNKT-cell cytotoxicity against keratinocytes in allergic contact dermatitis.](#)  
Balato A, Zhao Y, Harberts E, Groleau P, Liu J, Fischelevich R, Gaspari AA. *Exp Dermatol.* 2012 Dec;21(12):915-20. doi: 10.1111/exd.12036.
- [A Central Role for Transcription Factor C/EBP-beta in Regulating CD1d Gene Expression in Human Keratinocytes.](#)  
Sikder H, Zhao Y, Balato A, Chapoval A, Fischelevich R, Gade P, Singh IS, Kalvakolanu DV, Johnson PF, Gaspari AA. *J Immunol.* 2009 Aug 1;183(3):1657-66. Epub 2009 Jul 10.


### Applications

Western Blot (Transfected lysate)



Western Blot analysis of CD1D expression in transfected 293T cell line ([H00000912-T01](#)) by CD1D MaxPab polyclonal antibody.

Lane 1: CD1D transfected lysate(36.96 KDa).  
Lane 2: Non-transfected lysate.

 [Protocol Download](#)

## Gene Information

**Entrez GeneID:** [912](#)

**GeneBank** [BC027926](#)

**Accession#:**

**Protein** [AAH27926](#)

**Accession#:**

**Gene Name:** CD1D

**Gene Alias:** CD1A,MGC34622,R3

**Gene** CD1d molecule

**Description:**

**Omim ID:** [188410](#)

**Gene Ontology:** [Hyperlink](#)

**Gene Summary:** This gene encodes a divergent member of the CD1 family of transmembrane glycoproteins, which are structurally related to the major histocompatibility complex (MHC) proteins and form heterodimers with beta-2-microglobulin. The CD1 proteins mediate the presentation of primarily lipid and glycolipid antigens of self or microbial origin to T cells. The human genome contains five CD1 family genes organized in a cluster on chromosome 1. The CD1 family members are thought to differ in their cellular localization and specificity for particular lipid ligands. The protein encoded by this gene localizes to late endosomes and lysosomes via a tyrosine-based motif in the cytoplasmic tail. [provided by RefSeq]

**Other Designations:** CD1D antigen,CD1D antigen, d polypeptide,HMC class I antigen-like glycoprotein CD1D,OTTHUMP00000024053,T-cell surface glycoprotein CD1d,differentiation antigen CD1-alpha-3,thymocyte antigen CD1D

## Gene Pathway

[Hematopoietic cell lineage](#)

## Related Disease

[Campylobacter Infections](#) [Genetic Predisposition to Disease](#) [Guillain-Barre Syndrome](#)  
[Lung Diseases](#) [Mycobacterium Infections](#)

