



# SZABO SCANDIC

Part of Europa Biosite

## Produktinformation



Forschungsprodukte & Biochemikalien



Zellkultur & Verbrauchsmaterial



Diagnostik & molekulare Diagnostik



Laborgeräte & Service

Weitere Information auf den folgenden Seiten!  
See the following pages for more information!



### Lieferung & Zahlungsart

siehe unsere [Liefer- und Versandbedingungen](#)

### Zuschläge

- Mindermengenzuschlag
- Trockeneiszuschlag
- Gefahrgutzuschlag
- Expressversand

### SZABO-SCANDIC HandelsgmbH

Quellenstraße 110, A-1100 Wien

T. +43(0)1 489 3961-0

F. +43(0)1 489 3961-7

[mail@szabo-scandic.com](mailto:mail@szabo-scandic.com)

[www.szabo-scandic.com](http://www.szabo-scandic.com)

[linkedin.com/company/szaboscandic](https://www.linkedin.com/company/szaboscandic) 

## CD1D 293T Cell Transient Overexpression Lysate(Denatured)

Catalog # : H00000912-T01

規格 : [ 100 uL ]

List All

### Specification

**Transfected Cell Line:** 293T

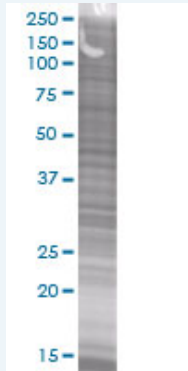
**Plasmid:** pCMV-CD1D full-length

**Host:** Human

**Theoretical MW (kDa):** 36.96

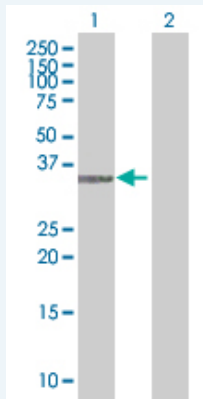
**Quality Control Testing:** Transient overexpression cell lysate was tested with Anti-CD1D antibody ([H00000912-B01](#)) by Western Blots.

#### SDS-PAGE Gel



CD1D transfected lysate

#### Western Blot



Lane 1: CD1D transfected lysate ( 36.96 KDa).

Lane 2: Non-transfected lysate.

**Storage Buffer:** 1X Sample Buffer (50 mM Tris-HCl, 2% SDS, 10% glycerol, 300 mM 2-mercaptoethanol, 0.01% Bromophenol blue)

**Storage Instruction:** Store at -80°C. Aliquot to avoid repeated freezing and thawing.

**MSDS:**  [Download](#)

### Applications

## Western Blot

### Gene Information

Entrez GeneID: [912](#)

GeneBank [BC027926](#)  
Accession#:

Protein [AAH27926](#)  
Accession#:

Gene Name: CD1D

Gene Alias: CD1A,MGC34622,R3

Gene Description: CD1d molecule

Omim ID: [188410](#)

Gene Ontology: [Hyperlink](#)

**Gene Summary:** This gene encodes a divergent member of the CD1 family of transmembrane glycoproteins, which are structurally related to the major histocompatibility complex (MHC) proteins and form heterodimers with beta-2-microglobulin. The CD1 proteins mediate the presentation of primarily lipid and glycolipid antigens of self or microbial origin to T cells. The human genome contains five CD1 family genes organized in a cluster on chromosome 1. The CD1 family members are thought to differ in their cellular localization and specificity for particular lipid ligands. The protein encoded by this gene localizes to late endosomes and lysosomes via a tyrosine-based motif in the cytoplasmic tail. [provided by RefSeq]

**Other Designations:** CD1D antigen,CD1D antigen, d polypeptide,HMC class I antigen-like glycoprotein CD1D,OTTHUMP00000024053,T-cell surface glycoprotein CD1d,differentiation antigen CD1-alpha-3,thymocyte antigen CD1D

### Gene Pathway

[Hematopoietic cell lineage](#)

### Related Disease

[Campylobacter Infections](#) [Genetic Predisposition to Disease](#) [Guillain-Barre Syndrome](#)  
[Lung Diseases](#) [Mycobacterium Infections](#)