



# SZABO SCANDIC

Part of Europa Biosite

## Produktinformation



Forschungsprodukte & Biochemikalien



Zellkultur & Verbrauchsmaterial



Diagnostik & molekulare Diagnostik



Laborgeräte & Service

Weitere Information auf den folgenden Seiten!  
See the following pages for more information!



### Lieferung & Zahlungsart

siehe unsere [Liefer- und Versandbedingungen](#)

### Zuschläge

- Mindermengenzuschlag
- Trockeneiszuschlag
- Gefahrgutzuschlag
- Expressversand

### SZABO-SCANDIC HandelsgmbH

Quellenstraße 110, A-1100 Wien

T. +43(0)1 489 3961-0

F. +43(0)1 489 3961-7

[mail@szabo-scandic.com](mailto:mail@szabo-scandic.com)

[www.szabo-scandic.com](http://www.szabo-scandic.com)

[linkedin.com/company/szaboscandic](https://www.linkedin.com/company/szaboscandic) 

## CD2 293T Cell Transient Overexpression Lysate(Denatured)

Catalog # : H00000914-T01

規格 : [ 100 uL ]

[List All](#)

### Specification

**Transfected Cell Line:** 293T

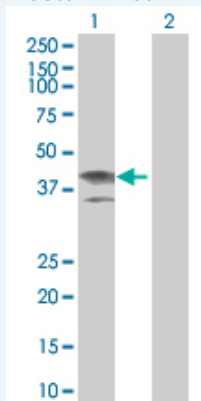
**Plasmid:** pCMV-CD2 full-length

**Host:** Human

**Theoretical MW (kDa):** 38.72

**Quality Control Testing:** Transient overexpression cell lysate was tested with Anti-CD2 antibody (H00000914-B02) by Western Blots.

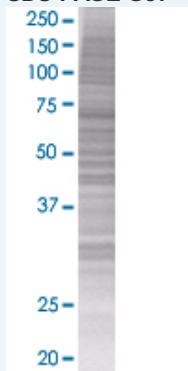
#### Western Blot



Lane 1: CD2 transfected lysate ( 38.61 KDa)

Lane 2: Non-transfected lysate.

#### SDS-PAGE Gel



CD2 transfected lysate.

**Storage Buffer:** 1X Sample Buffer (50 mM Tris-HCl, 2% SDS, 10% glycerol, 300 mM 2-mercaptoethanol, 0.01% Bromophenol blue)

**Storage Instruction:** Store at -80°C. Aliquot to avoid repeated freezing and thawing.

**MSDS:**  [Download](#)

### Applications

## Western Blot

### Gene Information

Entrez GeneID: [914](#)

GeneBank Accession#: [BC033583](#)

Protein Accession#: [AAH33583](#)

Gene Name: CD2

Gene Alias: SRBC,T11

Gene Description: CD2 molecule

Omim ID: [186990](#)

Gene Ontology: [Hyperlink](#)

Other Designations: CD2 antigen (p50), sheep red blood cell receptor, OTTHUMP00000024366, OTTHUMP00000059318, lymphocyte-function antigen-2

### Gene Pathway

[Cell adhesion molecules \(CAMs\) Hematopoietic cell lineage](#)

### Related Disease

[Arthritis, Rheumatoid Genetic Predisposition to Disease](#)

[服務條款](#) | [隱私權政策](#) | [著作及商標](#) | [網站地圖](#)

©2016 亞諾法生技股份有限公司 Abnova Corporation. 版權所有.