



SZABO SCANDIC

Part of Europa Biosite

Produktinformation



Forschungsprodukte & Biochemikalien



Zellkultur & Verbrauchsmaterial



Diagnostik & molekulare Diagnostik



Laborgeräte & Service

Weitere Information auf den folgenden Seiten!
See the following pages for more information!



Lieferung & Zahlungsart

siehe unsere [Liefer- und Versandbedingungen](#)

Zuschläge

- Mindermengenzuschlag
- Trockeneiszuschlag
- Gefahrgutzuschlag
- Expressversand

SZABO-SCANDIC HandelsgmbH

Quellenstraße 110, A-1100 Wien

T. +43(0)1 489 3961-0

F. +43(0)1 489 3961-7

mail@szabo-scandic.com

www.szabo-scandic.com

[linkedin.com/company/szaboscandic](https://www.linkedin.com/company/szaboscandic) 

CD3D purified MaxPab rabbit polyclonal antibody (D01P) MaxPab®

Catalog # : H00000915-D01P

規格 : [100 ug]

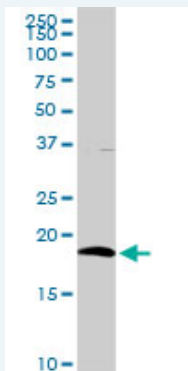
[List All](#)

Specification

Product Description:	Rabbit polyclonal antibody raised against a full-length human CD3D protein.
Immunogen:	CD3D (NP_000723.1, 1 a.a. ~ 171 a.a) full-length human protein.
Sequence:	MEHSTFLSGLVLATLLSQVSPFKIPIEELEDRFVNCNTSITWEGTVGTL LSDITRLDLGKRILDPRGIYRCNGTDIYKDKESTVQVHYRMCQSCVELDP ATVAGIIVTDVIATLLLLALGVFCFAGHETGRLSGAADTQALLRNDQVYQP LRDRDDAQYSHLGGNWARNK
Host:	Rabbit
Reactivity:	Human, Mouse
Quality Control Testing:	Antibody reactive against mammalian transfected lysate.
Storage Buffer:	In 1x PBS, pH 7.4
Storage Instruction:	Store at -20°C or lower. Aliquot to avoid repeated freezing and thawing.
MSDS:	Download
Datasheet:	Download

Applications

Western Blot (Tissue lysate)



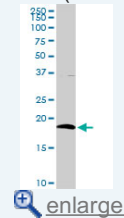
CD3D MaxPab rabbit polyclonal antibody. Western Blot analysis of CD3D expression in mouse kidney.

[Protocol Download](#)

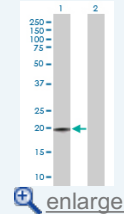
Western Blot (Transfected lysate)

Application Image

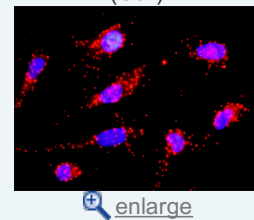
Western Blot (Tissue lysate)

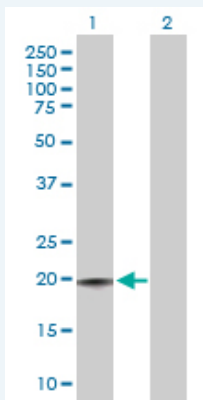


Western Blot (Transfected lysate)



In situ Proximity Ligation Assay (Cell)



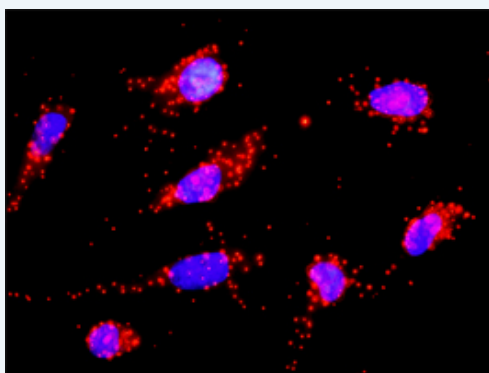


Western Blot analysis of CD3D expression in transfected 293T cell line ([H00000915-T01](#)) by CD3D MaxPab polyclonal antibody.

Lane 1: CD3D transfected lysate(18.90 KDa).
Lane 2: Non-transfected lysate.

 [Protocol Download](#)

In situ Proximity Ligation Assay (Cell)



Proximity Ligation Analysis of protein-protein interactions between CD3D and CANX. HeLa cells were stained with anti-CD3D rabbit purified polyclonal 1:1200 and anti-CANX mouse monoclonal antibody 1:50. Each red dot represents the detection of protein-protein interaction complex, and nuclei were counterstained with DAPI (blue).

Gene Information

Entrez GeneID: [915](#)

GeneBank [NM_000732](#)
Accession#:

Protein [NP_000723.1](#)
Accession#:

Gene Name: CD3D

Gene Alias: CD3-DELTA,T3D

Gene Description: CD3d molecule, delta (CD3-TCR complex)

Omim ID: [186790](#), [600802](#)

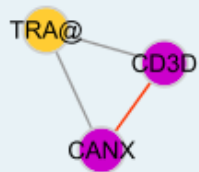
Gene Ontology: [Hyperlink](#)

Gene Summary: The protein encoded by this gene is part of the T-cell receptor/CD3 complex (TCR/CD3 complex) and is involved in T-cell development and signal transduction. The encoded membrane protein represents the delta subunit of the CD3 complex, and along with four other CD3 subunits, binds either TCR alpha/beta or TCR gamma/delta to form the TCR/CD3 complex on the surface of T-cells. Defects in this gene are a cause of severe combined immunodeficiency autosomal recessive T-

cell-negative/B-cell-positive/NK-cell-positive (SCIDBNK). Two transcript variants encoding different isoforms have been found for this gene. Other variants may also exist, but the full-length natures of their transcripts has yet to be defined. [provided by RefSeq]

Other Designations: CD3D antigen, delta polypeptide, CD3d antigen, delta polypeptide (TiT3 complex), T-cell receptor T3 delta chain, T-cell surface glycoprotein CD3 delta chain

Interactome



Gene Pathway

[Hematopoietic cell lineage](#) [Primary immunodeficiency](#) [T cell receptor signaling pathway](#)

Related Disease

[Celiac Disease](#) [Genetic Predisposition to Disease](#)

[服務條款](#) | [隱私權政策](#) | [著作及商標](#) | [網站地圖](#)

©2016 亞諾法生技股份有限公司 Abnova Corporation. 版權所有.