



SZABO SCANDIC

Part of Europa Biosite

Produktinformation



Forschungsprodukte & Biochemikalien



Zellkultur & Verbrauchsmaterial



Diagnostik & molekulare Diagnostik



Laborgeräte & Service

Weitere Information auf den folgenden Seiten!
See the following pages for more information!



Lieferung & Zahlungsart

siehe unsere [Liefer- und Versandbedingungen](#)

Zuschläge

- Mindermengenzuschlag
- Trockeneiszuschlag
- Gefahrgutzuschlag
- Expressversand

SZABO-SCANDIC HandelsgmbH

Quellenstraße 110, A-1100 Wien

T. +43(0)1 489 3961-0

F. +43(0)1 489 3961-7

mail@szabo-scandic.com

www.szabo-scandic.com

[linkedin.com/company/szaboscandic](https://www.linkedin.com/company/szaboscandic) 

CD3E monoclonal antibody (M01), clone 3H5

Catalog # : H00000916-M01

規格 : [100 ug]

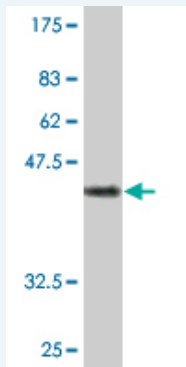
List All

Specification

Product Description:	Mouse monoclonal antibody raised against a full-length recombinant CD3E.
Immunogen:	CD3E (AAH49847.1, 23 a.a. ~ 207 a.a) full-length recombinant protein with GST tag. MW of the GST tag alone is 26 KDa.
Sequence:	DGNEEMGGITQTPYKVSISGTTVILTCPQYPGSEILWQRNDKNIGGEDDD KNIGSDEDHLKSLKEFSELEQSGYYVCYPRGSKPEDANFYLYLRARVCEN CMEMDVMSVATIVVDICITGGLLLL VYYWSKNRKAKAKPVTRGAGAGGR QRGQNKERPPPVPNPDYEPKRGQRDLYSGLNQRR
Host:	Mouse
Reactivity:	Human
Isotype:	IgG2b Kappa

Quality Control Antibody Reactive Against Recombinant Protein.

Testing:



Western Blot detection against Immunogen (46.09 KDa) .

Storage Buffer: In 1x PBS, pH 7.4

Storage Instruction: Store at -20°C or lower. Aliquot to avoid repeated freezing and thawing.

MSDS: [Download](#)

Datasheet: [Download](#)

Applications

Western Blot (Recombinant protein)

[Protocol Download](#)

ELISA

Gene Information

Entrez GeneID: [916](#)

Application Image

Western Blot (Recombinant protein)

ELISA

GeneBank Accession#: [BC049847](#)

Protein Accession#: [AAH49847.1](#)

Gene Name: CD3E

Gene Alias: FLJ18683,T3E,TCRE

Gene Description: CD3e molecule, epsilon (CD3-TCR complex)

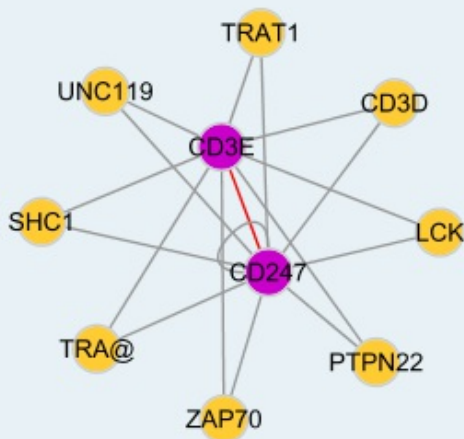
Omim ID: [186830](#)

Gene Ontology: [Hyperlink](#)

Gene Summary: The protein encoded by this gene is the CD3-epsilon polypeptide, which together with CD3-gamma, -delta and -zeta, and the T-cell receptor alpha/beta and gamma/delta heterodimers, forms the T-cell receptor-CD3 complex. This complex plays an important role in coupling antigen recognition to several intracellular signal-transduction pathways. The genes encoding the epsilon, gamma and delta polypeptides are located in the same cluster on chromosome 11. The epsilon polypeptide plays an essential role in T-cell development. Defects in this gene cause immunodeficiency. This gene has also been linked to a susceptibility to type I diabetes in women. [provided by RefSeq]

Other Designations: CD3-epsilon,CD3E antigen, epsilon polypeptide,CD3e antigen, epsilon polypeptide (TiT3 complex),T-cell antigen receptor complex, epsilon subunit of T3,T-cell surface antigen T3/Leu-4 epsilon chain,T-cell surface glycoprotein CD3 epsilon chain

Interactome



Gene Pathway

[Hematopoietic cell lineage](#) [Primary immunodeficiency](#) [T cell receptor signaling pathway](#)

Related Disease

[Asthma](#) [Asthma](#) [Cardiovascular Diseases](#) [Celiac Disease](#) [Depressive Disorder, Major](#) [Diabetes Mellitus, Type 2](#) [Edema](#) [Genetic Predisposition to Disease](#) [Inflammation](#)

