



# SZABO SCANDIC

Part of Europa Biosite

## Produktinformation



Forschungsprodukte & Biochemikalien



Zellkultur & Verbrauchsmaterial



Diagnostik & molekulare Diagnostik



Laborgeräte & Service

Weitere Information auf den folgenden Seiten!  
See the following pages for more information!



### Lieferung & Zahlungsart

siehe unsere [Liefer- und Versandbedingungen](#)

### Zuschläge

- Mindermengenzuschlag
- Trockeneiszuschlag
- Gefahrgutzuschlag
- Expressversand

### SZABO-SCANDIC HandelsgmbH

Quellenstraße 110, A-1100 Wien

T. +43(0)1 489 3961-0

F. +43(0)1 489 3961-7

[mail@szabo-scandic.com](mailto:mail@szabo-scandic.com)

[www.szabo-scandic.com](http://www.szabo-scandic.com)

[linkedin.com/company/szaboscandic](https://www.linkedin.com/company/szaboscandic) 



# CD247 purified MaxPab rabbit polyclonal antibody (D01P) MaxPab®

Catalog # : H00000919-D01P

規格 : [ 100 ug ]

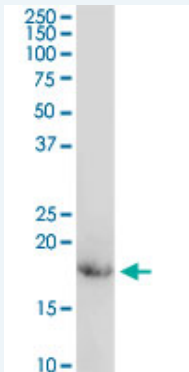
[List All](#)

## Specification

<b>Product Description:</b>	Rabbit polyclonal antibody raised against a full-length human CD247 protein.
<b>Immunogen:</b>	CD247 (NP_932170.1, 1 a.a. ~ 164 a.a) full-length human protein.
<b>Sequence:</b>	MKWKALFTAAILQAQLPITEAQSFGLLDPKLCYLLDGILFIYGVILTALFLR VKFSRSADAPAYQQGQNLYNELNLGRREEYDVLDRRGRDPEMGGK PQRRKNPQEGLYNELQDKMAEAYSEIGMKGERRRRGKGDGLYQGLS TATKDTYDALHMQUALPPR
<b>Host:</b>	Rabbit
<b>Reactivity:</b>	Human, Mouse, Rat
<b>Quality Control Testing:</b>	Antibody reactive against mammalian transfected lysate.
<b>Storage Buffer:</b>	In 1x PBS, pH 7.4
<b>Storage Instruction:</b>	Store at -20°C or lower. Aliquot to avoid repeated freezing and thawing.
<b>MSDS:</b>	 <a href="#">Download</a>
<b>Datasheet:</b>	 <a href="#">Download</a>

## Applications

### Western Blot (Tissue lysate)



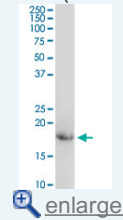
CD247 MaxPab rabbit polyclonal antibody. Western Blot analysis of CD247 expression in mouse kidney.

 [Protocol Download](#)

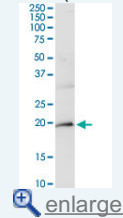
### Western Blot (Tissue lysate)

## Application Image

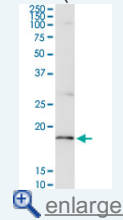
### Western Blot (Tissue lysate)



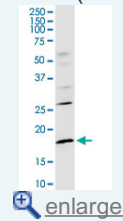
### Western Blot (Tissue lysate)



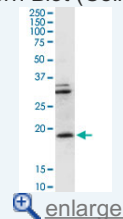
### Western Blot (Tissue lysate)



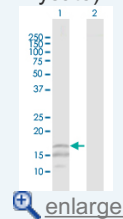
### Western Blot (Cell lysate)



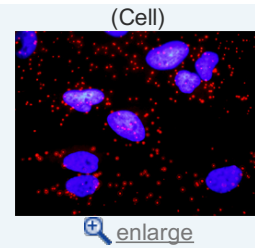
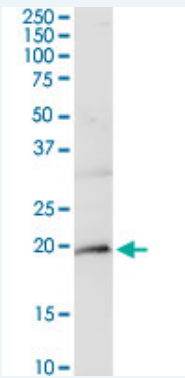
### Western Blot (Cell lysate)



### Western Blot (Transfected lysate)



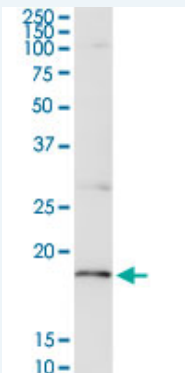
*In situ Proximity Ligation Assay*



CD247 MaxPab rabbit polyclonal antibody. Western Blot analysis of CD247 expression in mouse brain.

 [Protocol Download](#)

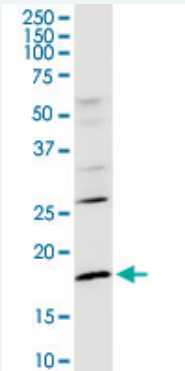
#### Western Blot (Tissue lysate)




CD247 MaxPab rabbit polyclonal antibody. Western Blot analysis of CD247 expression in rat brain.

 [Protocol Download](#)

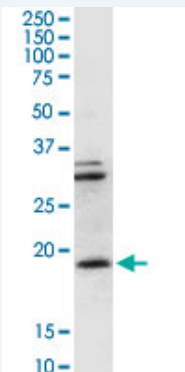
#### Western Blot (Cell lysate)



CD247 MaxPab rabbit polyclonal antibody. Western Blot analysis of CD247 expression in IMR-32.

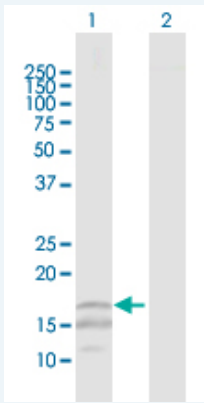
 [Protocol Download](#)

#### Western Blot (Cell lysate)



CD247 MaxPab rabbit polyclonal antibody. Western Blot analysis of CD247 expression in Raw 264.7.

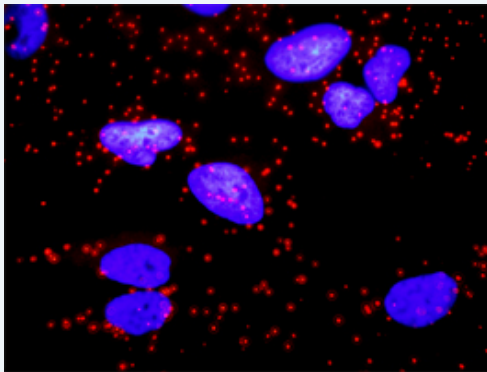
**Western Blot (Transfected lysate)**



Western Blot analysis of CD247 expression in transfected 293T cell line ([H00000919-T01](#)) by CD247 MaxPab polyclonal antibody.

Lane 1: CD247 transfected lysate(18.70 KDa).  
Lane 2: Non-transfected lysate.

**In situ Proximity Ligation Assay (Cell)**



Proximity Ligation Analysis of protein-protein interactions between CD247 and CD3E. HeLa cells were stained with anti-CD247 rabbit purified polyclonal 1:1200 and anti-CD3E mouse monoclonal antibody 1:50. Each red dot represents the detection of protein-protein interaction complex, and nuclei were counterstained with DAPI (blue).

**Gene Information**

Entrez GeneID: [919](#)

GeneBank [NM\\_198053](#)

Accession#:

Protein [NP\\_932170.1](#)

Accession#:

Gene Name: CD247

Gene Alias: CD3-ZETA,CD3H,CD3Q,CD3Z,T3Z,TCRZ

Gene Description: CD247 molecule

Omim ID: [186780](#), [610163](#)

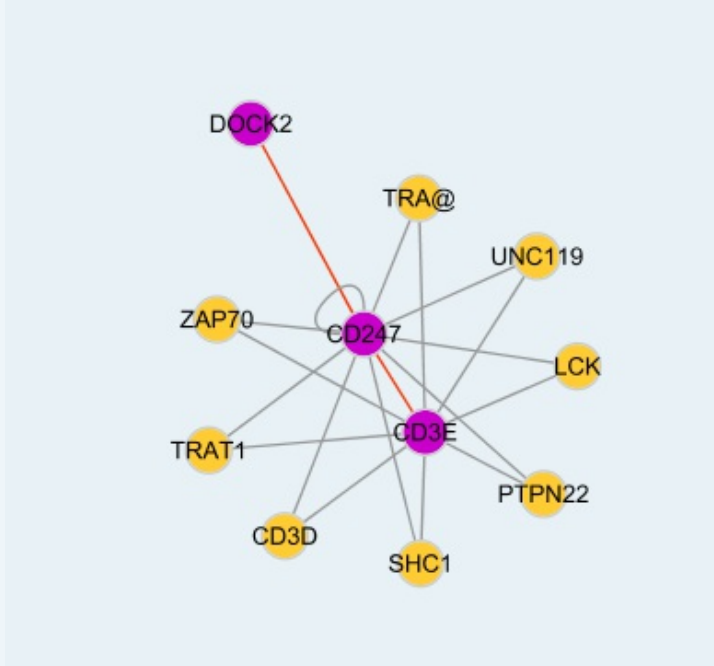
Gene Ontology: [Hyperlink](#)

**Gene Summary:** The protein encoded by this gene is T-cell receptor zeta, which together with T-cell receptor alpha/beta and gamma/delta heterodimers, and with CD3-gamma, -delta and -epsilon, forms the T-cell receptor-CD3

complex. The zeta chain plays an important role in coupling antigen recognition to several intracellular signal-transduction pathways. Low expression of the antigen results in impaired immune response. Two alternatively spliced transcript variants encoding distinct isoforms have been found for this gene. [provided by RefSeq]

**Other Designations:** CD247 antigen, zeta subunit, CD3Z antigen, zeta polypeptide (TIT3 complex), OTTHUMP00000032544, T-cell antigen receptor complex, zeta subunit of CD3, T-cell receptor T3 zeta chain, T-cell receptor zeta chain, T-cell surface glycoprotein CD3 zeta chain

### Interactome



### Gene Pathway

[Natural killer cell mediated cytotoxicity](#) [T cell receptor signaling pathway](#)

### Related Disease

[Arthritis, Rheumatoid](#) [Genetic Predisposition to Disease](#) [Hypertension](#)  
[Lupus Erythematosus](#), [Systemic Osteoporosis](#) [Scleroderma](#), [Systemic](#)

[服務條款](#) | [隱私權政策](#) | [著作及商標](#) | [網站地圖](#)

©2016 亞諾法生技股份有限公司 Abnova Corporation. 版權所有.