



# SZABO SCANDIC

Part of Europa Biosite

## Produktinformation



Forschungsprodukte & Biochemikalien



Zellkultur & Verbrauchsmaterial



Diagnostik & molekulare Diagnostik



Laborgeräte & Service

Weitere Information auf den folgenden Seiten!  
See the following pages for more information!



### Lieferung & Zahlungsart

siehe unsere [Liefer- und Versandbedingungen](#)

### Zuschläge

- Mindermengenzuschlag
- Trockeneiszuschlag
- Gefahrgutzuschlag
- Expressversand

### SZABO-SCANDIC HandelsgmbH

Quellenstraße 110, A-1100 Wien

T. +43(0)1 489 3961-0

F. +43(0)1 489 3961-7

[mail@szabo-scandic.com](mailto:mail@szabo-scandic.com)

[www.szabo-scandic.com](http://www.szabo-scandic.com)

[linkedin.com/company/szaboscandic](https://www.linkedin.com/company/szaboscandic)

## CD8A polyclonal antibody (A01)

Catalog # : H00000925-A01

規格 : [ 50 uL ]

[List All](#)

### Specification

**Product Description:** Mouse polyclonal antibody raised against a partial recombinant CD8A.

**Immunogen:** CD8A (NP\_001759, 22 a.a. ~ 131 a.a) partial recombinant protein with GST tag.

**Sequence:** SQFRVSPLDRTWNLGETVELKCQVLLSNPTSGCSWLFQPRGAAASPTF  
LLYLSQNKPKAAEGLDTQRFSGKRLGDTFVLTLSDFRRENEGYYFCSAL  
SNSIMYFSHFVPV

**Host:** Mouse

**Reactivity:** Human

**Quality Control Testing:** Antibody Reactive Against Recombinant Protein.

**Storage Buffer:** 50 % glycerol

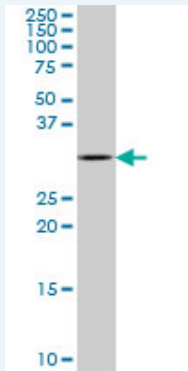
**Storage Instruction:** Store at -20°C or lower. Aliquot to avoid repeated freezing and thawing.

**MSDS:** [Download](#)

**Datasheet:** [Download](#)

### Applications

#### Western Blot (Cell lysate)



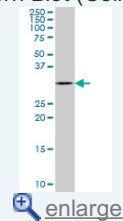
CD8A polyclonal antibody (A01), Lot # ABNOVA060619QCS1. Western Blot analysis of CD8A expression in SJCRH30.

[Protocol Download](#)

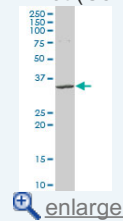
#### Western Blot (Cell lysate)

### Application Image

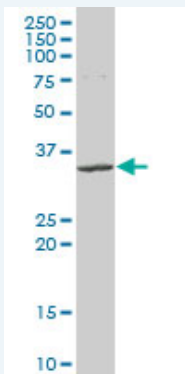
#### Western Blot (Cell lysate)




#### Western Blot (Cell lysate)



ELISA



CD8A polyclonal antibody (A01), Lot # 050912JC01. Western Blot analysis of CD8A expression in Daoy.

 [Protocol Download](#)

## ELISA

## Gene Information

**Entrez GeneID:** [925](#)

**GeneBank** [NM\\_001768](#)

**Accession#:**

**Protein** [NP\\_001759](#)

**Accession#:**

**Gene Name:** CD8A

**Gene Alias:** CD8,Leu2,MAL,p32

**Gene** CD8a molecule

**Description:**

**Omim ID:** [186910](#), [608957](#)

**Gene Ontology:** [Hyperlink](#)

**Gene Summary:** The CD8 antigen is a cell surface glycoprotein found on most cytotoxic T lymphocytes that mediates efficient cell-cell interactions within the immune system. The CD8 antigen acts as a corepressor with the T-cell receptor on the T lymphocyte to recognize antigens displayed by an antigen presenting cell (APC) in the context of class I MHC molecules. The coreceptor functions as either a homodimer composed of two alpha chains, or as a heterodimer composed of one alpha and one beta chain. Both alpha and beta chains share significant homology to immunoglobulin variable light chains. This gene encodes the CD8 alpha chain isoforms. Multiple transcript variants encoding different isoforms have been found for this gene. [provided by RefSeq]

**Other Designations:** CD8 antigen alpha polypeptide,CD8 antigen, alpha polypeptide (p32),Leu2 T-lymphocyte antigen,OKT8 T-cell antigen,T cell co-receptor,T-cell antigen Leu2,T-cell surface glycoprotein CD8 alpha chain,T-lymphocyte differentiation antigen T8/Leu-2,T8 T-cell ant

## Gene Pathway

[Antigen processing and presentation](#) [Cell adhesion molecules \(CAMs\)](#)  
[Hematopoietic cell lineage](#) [Primary immunodeficiency](#) [T cell receptor signaling pathway](#)