



SZABO SCANDIC

Part of Europa Biosite

Produktinformation



Forschungsprodukte & Biochemikalien



Zellkultur & Verbrauchsmaterial



Diagnostik & molekulare Diagnostik



Laborgeräte & Service

Weitere Information auf den folgenden Seiten!
See the following pages for more information!



Lieferung & Zahlungsart

siehe unsere [Liefer- und Versandbedingungen](#)

Zuschläge

- Mindermengenzuschlag
- Trockeneiszuschlag
- Gefahrgutzuschlag
- Expressversand

SZABO-SCANDIC HandelsgmbH

Quellenstraße 110, A-1100 Wien

T. +43(0)1 489 3961-0

F. +43(0)1 489 3961-7

mail@szabo-scandic.com

www.szabo-scandic.com

[linkedin.com/company/szaboscandic](https://www.linkedin.com/company/szaboscandic) 

CD19 purified MaxPab rabbit polyclonal antibody (D01P) MaxPab®

Catalog # : H00000930-D01P

規格 : [100 ug]

[List All](#)

Specification

Product Description: Rabbit polyclonal antibody raised against a full-length human CD19 protein.

Immunogen: CD19 (NP_001761.3, 1 a.a. ~ 556 a.a) full-length human protein.

Sequence:
 MPPRLLFLLFLTPMEVRPEEPLVVKVEEGDNAVLQCLKGTS DGPTQ
 QLTWSRESPLKFLKLSLGLPGLGIHMRPLAIFNVSQQMGGFYLC
 QPGPPSEKAWQPGWTVNVEGSGELFRWNVSDLGGLGCGLKNSSEG
 PSSPSGKLMSPKLYWAKDRPEIWEGEPPCLPPRDSL NQSLSQDLTMA
 PGSTLWLSCGVPPDSVSRGPLSWTHVHPKGP KSLLSLELKDDRPARDM
 WVMETGLLLPRATAQDAGKYCHRG NLTMSFHLEITARPVLWHLLRT
 GGWKVSAVTLAYLIFCLCSLVGILHLQRALVLR RKRKRMTDPTRRFFKVT
 PPPGSGPQNQYGNVLSLPTPT SGLGRAQRWAAGLGGTAPSYGNPSSD
 VQADGALGSRSPPGVGP EEEEEEGEYEEPDSEEDSEFYENDSNLQDQ
 LSQDGSYENPEDEPLGPEDEDSFSNAESYENEDEELTQP VARTMDFL
 SPHGSAWDPSREATSLGSQSYEDMRGILYAAPQLRSIRGQPGPNHEED
 ADSYENMDNPDGPDPAWGGGGRMGTWSTR

Host: Rabbit

Reactivity: Human, Mouse

Quality Control Testing: Antibody reactive against mammalian transfected lysate.

Storage Buffer: In 1x PBS, pH 7.4

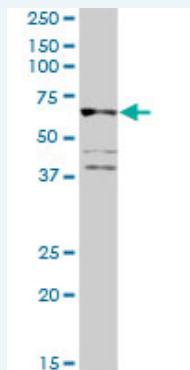
Storage Instruction: Store at -20°C or lower. Aliquot to avoid repeated freezing and thawing.

MSDS: [Download](#)

Datasheet: [Download](#)

Applications

Western Blot (Tissue lysate)

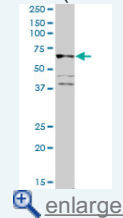


CD19 MaxPab rabbit polyclonal antibody. Western Blot analysis of CD19 expression in mouse kidney.

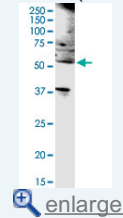
[Protocol Download](#)

Application Image

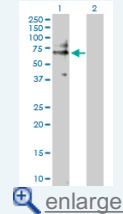
Western Blot (Tissue lysate)



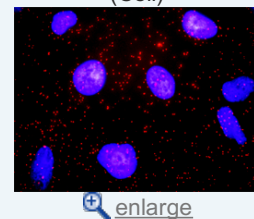
Western Blot (Cell lysate)



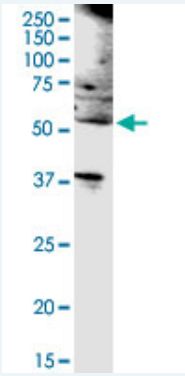
Western Blot (Transfected lysate)




In situ Proximity Ligation Assay (Cell)



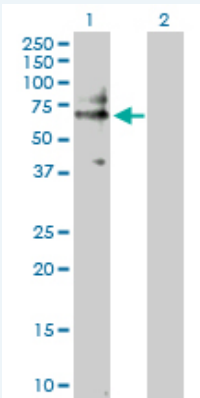
Western Blot (Cell lysate)



CD19 MaxPab rabbit polyclonal antibody. Western Blot analysis of CD19 expression in IMR-32.

 [Protocol Download](#)

Western Blot (Transfected lysate)

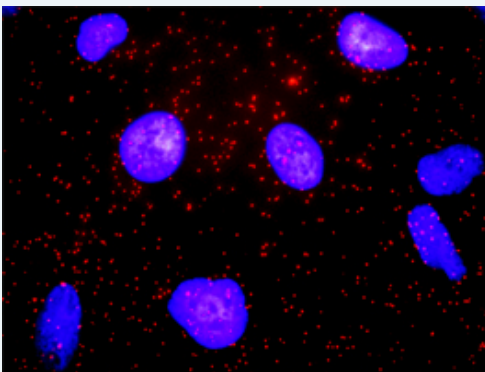


Western Blot analysis of CD19 expression in transfected 293T cell line ([H00000930-T01](#)) by CD19 MaxPab polyclonal antibody.

Lane 1: CD19 transfected lysate(61.10 KDa).
Lane 2: Non-transfected lysate.

 [Protocol Download](#)

In situ Proximity Ligation Assay (Cell)



Proximity Ligation Analysis of protein-protein interactions between CD19 and CD82. HeLa cells were stained with anti-CD19 rabbit purified polyclonal 1:1200 and anti-CD82 mouse monoclonal antibody 1:50. Each red dot represents the detection of protein-protein interaction complex, and nuclei were counterstained with DAPI (blue).

Gene Information

Entrez GeneID: [930](#)

GeneBank [NM_001770](#)

Accession#:

Protein [NP_001761.3](#)

Accession#:

Gene Name: CD19

Gene Alias: B4,MGC12802

Gene Description: CD19 molecule

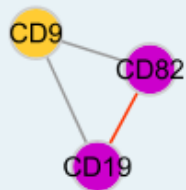
Omim ID: [107265](#)

Gene Ontology: [Hyperlink](#)

Gene Summary: Lymphocytes proliferate and differentiate in response to various concentrations of different antigens. The ability of the B cell to respond in a specific, yet sensitive manner to the various antigens is achieved with the use of low-affinity antigen receptors. This gene encodes a cell surface molecule which assembles with the antigen receptor of B lymphocytes in order to decrease the threshold for antigen receptor-dependent stimulation. [provided by RefSeq]

Other Designations: B-lymphocyte antigen CD19,CD19 antigen

Interactome



Gene Pathway

[B cell receptor signaling pathway](#) [Hematopoietic cell lineage](#) [Primary immunodeficiency](#)

Related Disease

[Arthritis, Rheumatoid](#) [Crohn Disease](#) [Crohn's disease](#) [Genetic Predisposition to Disease](#) [Lupus Erythematosus, Systemic](#) [Pemphigus](#) [Scleroderma, Systemic](#)