



# SZABO SCANDIC

Part of Europa Biosite

## Produktinformation



Forschungsprodukte & Biochemikalien



Zellkultur & Verbrauchsmaterial



Diagnostik & molekulare Diagnostik



Laborgeräte & Service

Weitere Information auf den folgenden Seiten!  
See the following pages for more information!



### Lieferung & Zahlungsart

siehe unsere [Liefer- und Versandbedingungen](#)

### Zuschläge

- Mindermengenzuschlag
- Trockeneiszuschlag
- Gefahrgutzuschlag
- Expressversand

### SZABO-SCANDIC HandelsgmbH

Quellenstraße 110, A-1100 Wien

T. +43(0)1 489 3961-0

F. +43(0)1 489 3961-7

[mail@szabo-scandic.com](mailto:mail@szabo-scandic.com)

[www.szabo-scandic.com](http://www.szabo-scandic.com)

[linkedin.com/company/szaboscandic](https://www.linkedin.com/company/szaboscandic) 

## MS4A1 polyclonal antibody (A01)

Catalog # : H00000931-A01

規格 : [ 50 uL ]

[List All](#)

### Specification

**Product Description:** Mouse polyclonal antibody raised against a partial recombinant MS4A1.

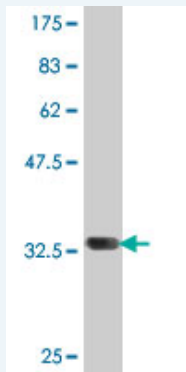
**Immunogen:** MS4A1 (AAH02807, 210 a.a. ~ 297 a.a) partial recombinant protein with GST tag.

**Sequence:** GIVENEWKRTCSRPKSNIVLLSAEEKKEQTIEIKEEWVGLTETSSQPKNEE  
DIEIPIQEEEEEEETETNFPEPPQDQESSPIENDSSP

**Host:** Mouse

**Reactivity:** Human

**Quality Control Testing:** Antibody Reactive Against Recombinant Protein.



Western Blot detection against Immunogen (35.79 KDa) .

**Storage Buffer:** 50 % glycerol

**Storage Instruction:** Store at -20°C or lower. Aliquot to avoid repeated freezing and thawing.

**MSDS:** [Download](#)

**Datasheet:** [Download](#)

### Applications

**Western Blot (Recombinant protein)**

[Protocol Download](#)

**ELISA**

### Gene Information

**Entrez GeneID:** [931](#)

**GeneBank Accession#:** [BC002807](#)

### Application Image

Western Blot (Recombinant protein)

ELISA

**Protein** [AAH02807](#)

**Accession#:**

**Gene Name:** MS4A1

**Gene Alias:** B1,Bp35,CD20,LEU-16,MGC3969,MS4A2,S7

**Gene Description:** membrane-spanning 4-domains, subfamily A, member 1

**Omim ID:** [112210](#)

**Gene Ontology:** [Hyperlink](#)

**Gene Summary:** This gene encodes a member of the membrane-spanning 4A gene family. Members of this nascent protein family are characterized by common structural features and similar intron/exon splice boundaries and display unique expression patterns among hematopoietic cells and nonlymphoid tissues. This gene encodes a B-lymphocyte surface molecule which plays a role in the development and differentiation of B-cells into plasma cells. This family member is localized to 11q12, among a cluster of family members. Alternative splicing of this gene results in two transcript variants which encode the same protein. [provided by RefSeq]

**Other Designations:** B-lymphocyte cell-surface antigen B1,CD20 antigen,CD20 receptor

#### **Gene Pathway**

[Hematopoietic cell lineage](#)

#### **Related Disease**

[Breast cancer](#) [Breast Neoplasms](#) [Genetic Predisposition to Disease](#)  
[Lymphoma, Large B-Cell, Diffuse](#) [Neoplasm Recurrence, Local](#) [Ovarian cancer](#)

[服務條款](#) | [隱私權政策](#) | [著作及商標](#) | [網站地圖](#)

©2016 亞諾法生技股份有限公司 Abnova Corporation. 版權所有.