



# SZABO SCANDIC

Part of Europa Biosite

## Produktinformation



Forschungsprodukte & Biochemikalien



Zellkultur & Verbrauchsmaterial



Diagnostik & molekulare Diagnostik



Laborgeräte & Service

Weitere Information auf den folgenden Seiten!  
See the following pages for more information!



### Lieferung & Zahlungsart

siehe unsere [Liefer- und Versandbedingungen](#)

### Zuschläge

- Mindermengenzuschlag
- Trockeneiszuschlag
- Gefahrgutzuschlag
- Expressversand

### SZABO-SCANDIC HandelsgmbH

Quellenstraße 110, A-1100 Wien

T. +43(0)1 489 3961-0

F. +43(0)1 489 3961-7

[mail@szabo-scandic.com](mailto:mail@szabo-scandic.com)

[www.szabo-scandic.com](http://www.szabo-scandic.com)

[linkedin.com/company/szaboscandic](https://www.linkedin.com/company/szaboscandic) 

# MS4A1 purified MaxPab mouse polyclonal antibody (B01P) MaxPab®

Catalog # : H00000931-B01P

規格 : [ 50 ug ]

[List All](#)

## Specification

**Product Description:** Mouse polyclonal antibody raised against a full-length human MS4A1 protein.

**Immunogen:** MS4A1 (NP\_068769.2, 1 a.a. ~ 297 a.a) full-length human protein.

**Sequence:**  
 MTPRNSVNGTFPAEPMKGPAMQSGPKPLFRMSSLVGPTQSFFMRE  
 SKTLGAVQIMNGLFHIALGLLMIPAGIYAPICVTWVYPLWGGIMYIISGSL  
 AATEKNSRKCLVKGKMMNSLSLFAAISGMILSIMDILNIKISHFLKMESLNFI  
 RAHTPYINIYNCEPANPSEKNSPSTQYCYSIQSLFLGILSVMLIFAFFQELVI  
 AGIVENEWKRTC SRPKSNIVLLSAEEKKEQTIEIKEEVVGLTETSSQPKNE  
 EDIEIPIQEEEEETETNFPEPPQDQESSPIENDSSP

**Host:** Mouse

**Reactivity:** Human

**Quality Control Testing:** Antibody reactive against mammalian transfected lysate.

**Storage Buffer:** In 1x PBS, pH 7.4

**Storage Instruction:** Store at -20°C or lower. Aliquot to avoid repeated freezing and thawing.

**MSDS:** [Download](#)

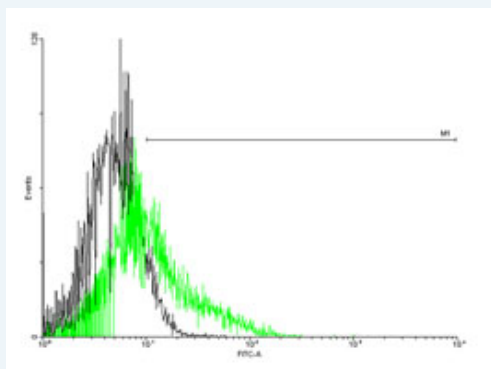
**Datasheet:** [Download](#)

## Publication Reference

1. [Identification of an alternative CD20 transcript variant in B-cell malignancies coding for a novel protein associated to rituximab resistance.](#)  
 Henry C, Deschamps M, Rohrlich PS, Pallandre JR, Remy-Martin JP, Callanan M, Traverse-Glehen A, GrandClement C, Garnache-Ottou F, Gressin R, Deconinck E, Salles G, Robinet E, Tiberghien P, Borg C, Ferrand C. *Blood*. 2010 Mar 25;115(12):2420-9. Epub 2010 Jan 20.

## Applications

### Flow Cytometry

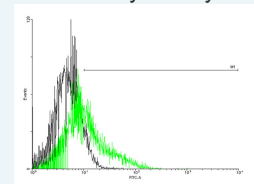


[enlarge this image](#)

FACS analysis of negative control 293 cells (Black) and MS4A1 expressing 293 cells

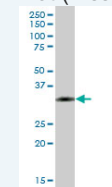
## Application Image

### Flow Cytometry



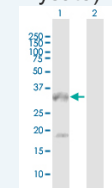
[enlarge](#)

### Western Blot (Tissue lysate)



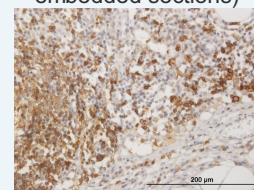
[enlarge](#)

### Western Blot (Transfected lysate)



[enlarge](#)

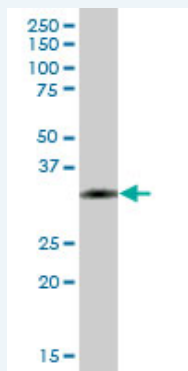
### Immunohistochemistry (Formalin/PFA-fixed paraffin-embedded sections)



[enlarge](#)

(Green) using MS4A1 purified MaxPab mouse polyclonal antibody.

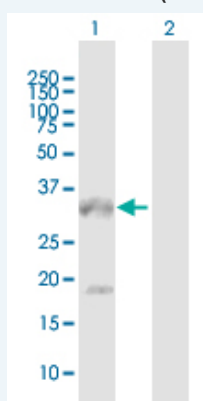
#### Western Blot (Tissue lysate)



MS4A1 MaxPab polyclonal antibody. Western Blot analysis of MS4A1 expression in human spleen.

 [Protocol Download](#)

#### Western Blot (Transfected lysate)



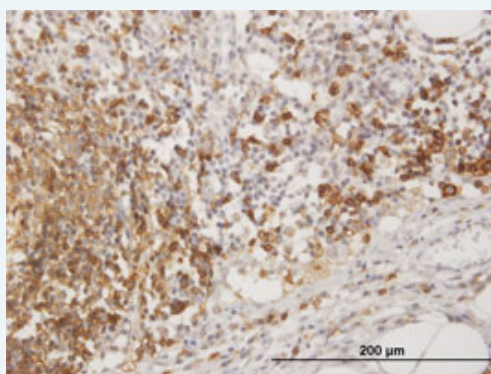
Western Blot analysis of MS4A1 expression in transfected 293T cell line ([H00000931-T01](#)) by MS4A1 MaxPab polyclonal antibody.


Lane 1: MS4A1 transfected lysate(32.67 KDa).

Lane 2: Non-transfected lysate.

 [Protocol Download](#)

#### Immunohistochemistry (Formalin/PFA-fixed paraffin-embedded sections)



 [enlarge this image](#)

Immunoperoxidase of [purified](#) MaxPab antibody to MS4A1 on formalin-fixed paraffin-embedded human lymph node. [antibody concentration 3 ug/ml]

 [Protocol Download](#)

#### Gene Information

Entrez GeneID: [931](#)

GeneBank [NM\\_021950.3](#)

Accession#:

Protein [NP\\_068769.2](#)

**Accession#:****Gene Name:** MS4A1**Gene Alias:** B1,Bp35,CD20,LEU-16,MGC3969,MS4A2,S7**Gene Description:** membrane-spanning 4-domains, subfamily A, member 1**Omim ID:** [112210](#)**Gene Ontology:** [Hyperlink](#)

**Gene Summary:** This gene encodes a member of the membrane-spanning 4A gene family. Members of this nascent protein family are characterized by common structural features and similar intron/exon splice boundaries and display unique expression patterns among hematopoietic cells and nonlymphoid tissues. This gene encodes a B-lymphocyte surface molecule which plays a role in the development and differentiation of B-cells into plasma cells. This family member is localized to 11q12, among a cluster of family members. Alternative splicing of this gene results in two transcript variants which encode the same protein. [provided by RefSeq]

**Other Designations:** B-lymphocyte cell-surface antigen B1,CD20 antigen,CD20 receptor**Gene Pathway**[Hematopoietic cell lineage](#)**Related Disease**[Breast cancer](#) [Breast Neoplasms](#) [Genetic Predisposition to Disease](#)  
[Lymphoma, Large B-Cell, Diffuse](#) [Neoplasm Recurrence, Local](#) [Ovarian cancer](#)