



SZABO SCANDIC

Part of Europa Biosite

Produktinformation



Forschungsprodukte & Biochemikalien



Zellkultur & Verbrauchsmaterial



Diagnostik & molekulare Diagnostik



Laborgeräte & Service

Weitere Information auf den folgenden Seiten!
See the following pages for more information!



Lieferung & Zahlungsart

siehe unsere [Liefer- und Versandbedingungen](#)

Zuschläge

- Mindermengenzuschlag
- Trockeneiszuschlag
- Gefahrgutzuschlag
- Expressversand

SZABO-SCANDIC HandelsgmbH

Quellenstraße 110, A-1100 Wien

T. +43(0)1 489 3961-0

F. +43(0)1 489 3961-7

mail@szabo-scandic.com

www.szabo-scandic.com

[linkedin.com/company/szaboscandic](https://www.linkedin.com/company/szaboscandic) 

MS4A1 monoclonal antibody (M01), clone 5C11

Catalog # : H00000931-M01

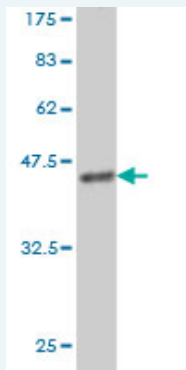
規格 : [100 ug]

[List All](#)

Specification

Product Description:	Mouse monoclonal antibody raised against a partial recombinant MS4A1.
Immunogen:	MS4A1 (AAH02807, 210 a.a. ~ 297 a.a) partial recombinant protein with GST tag. MW of the GST tag alone is 26 KDa.
Sequence:	GIVENEWKRTCSPKSNIVLLSAEEKKEQTIEIKEEVWGLTETSSQPKNEE DIEIPIQEEEEEEETETNFPEPPQDQESSPIENDSSP
Host:	Mouse
Reactivity:	Human
Isotype:	IgG1 Kappa

Quality Control Testing: Antibody Reactive Against Recombinant Protein.



Western Blot detection against Immunogen (35.42 KDa) .

Storage Buffer: In 1x PBS, pH 7.4

Storage Instruction: Store at -20°C or lower. Aliquot to avoid repeated freezing and thawing.

MSDS: [Download](#)

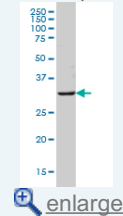
Datasheet: [Download](#)

Applications

Western Blot (Cell lysate)

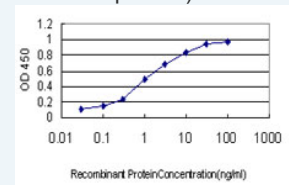
Application Image

Western Blot (Cell lysate)

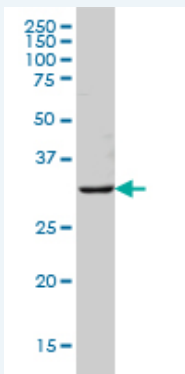


Western Blot (Recombinant protein)

Sandwich ELISA (Recombinant protein)



ELISA



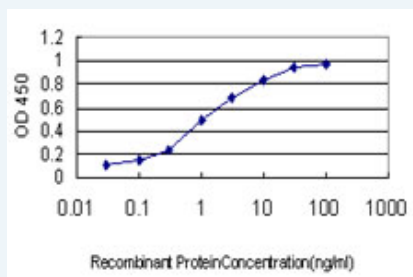
MS4A1 monoclonal antibody (M01), clone 5C11 Western Blot analysis of MS4A1 expression in HeLa S3 NE (Cat # L013V3).

[Protocol Download](#)

Western Blot (Recombinant protein)

[Protocol Download](#)

Sandwich ELISA (Recombinant protein)



Detection limit for recombinant GST tagged MS4A1 is approximately 0.1 ng/ml as a capture antibody.

[Protocol Download](#)

ELISA

Gene Information

Entrez GeneID: [931](#)

GeneBank [BC002807](#)

Accession#:

Protein [AAH02807](#)

Accession#:

Gene Name: MS4A1

Gene Alias: B1,Bp35,CD20,LEU-16,MGC3969,MS4A2,S7

Gene Description: membrane-spanning 4-domains, subfamily A, member 1

Omim ID: [112210](#)

Gene Ontology: [Hyperlink](#)

Gene Summary: This gene encodes a member of the membrane-spanning 4A gene family. Members of this nascent protein family are characterized by common structural features and similar intron/exon splice boundaries and display unique expression patterns among hematopoietic cells and nonlymphoid tissues. This gene encodes a B-lymphocyte surface molecule which plays a role in the development and differentiation of B-cells into plasma cells. This family member is localized to 11q12, among a cluster of family members. Alternative splicing of this gene results in two transcript variants which encode the same protein. [provided by

RefSeq

Other Designations: B-lymphocyte cell-surface antigen B1,CD20 antigen,CD20 receptor

Gene Pathway

Hematopoietic cell lineage

Related Disease

Breast cancer Breast Neoplasms Genetic Predisposition to Disease
Lymphoma, Large B-Cell, Diffuse Neoplasm Recurrence, Local Ovarian cancer

[服務條款](#) | [隱私權政策](#) | [著作及商標](#) | [網站地圖](#)

©2016 亞諾法生技股份有限公司 Abnova Corporation. 版權所有.