



SZABO SCANDIC

Part of Europa Biosite

Produktinformation



Forschungsprodukte & Biochemikalien



Zellkultur & Verbrauchsmaterial



Diagnostik & molekulare Diagnostik



Laborgeräte & Service

Weitere Information auf den folgenden Seiten!
See the following pages for more information!



Lieferung & Zahlungsart

siehe unsere [Liefer- und Versandbedingungen](#)

Zuschläge

- Mindermengenzuschlag
- Trockeneiszuschlag
- Gefahrgutzuschlag
- Expressversand

SZABO-SCANDIC HandelsgmbH

Quellenstraße 110, A-1100 Wien

T. +43(0)1 489 3961-0

F. +43(0)1 489 3961-7

mail@szabo-scandic.com

www.szabo-scandic.com

[linkedin.com/company/szaboscandic](https://www.linkedin.com/company/szaboscandic) 

MS4A1 293T Cell Transient Overexpression Lysate(Denatured)

Catalog # : H00000931-T01

規格 : [100 uL]

[List All](#)

Specification

Transfected Cell Line: 293T

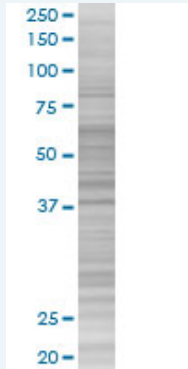
Plasmid: pCMV-MS4A1 full-length

Host: Human

Theoretical MW (kDa): 33.1

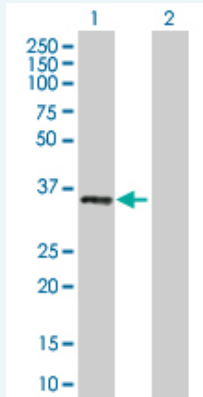
Quality Control Testing: Transient overexpression cell lysate was tested with Anti-MS4A1 antibody (H00000931-B01) by Western Blots.

SDS-PAGE Gel



MS4A1 transfected lysate.

Western Blot



Lane 1: MS4A1 transfected lysate (33.1 KDa)

Lane 2: Non-transfected lysate.

Storage Buffer: 1X Sample Buffer (50 mM Tris-HCl, 2% SDS, 10% glycerol, 300 mM 2-mercaptoethanol, 0.01% Bromophenol blue)

Storage Instruction: Store at -80°C. Aliquot to avoid repeated freezing and thawing.

MSDS:  [Download](#)

Applications

Western Blot

Gene Information

Entrez GeneID: [931](#)

GeneBank Accession#: [NM_021950.3](#)

Protein Accession#: =

Gene Name: MS4A1

Gene Alias: B1,Bp35,CD20,LEU-16,MGC3969,MS4A2,S7

Gene Description: membrane-spanning 4-domains, subfamily A, member 1

Omim ID: [112210](#)

Gene Ontology: [Hyperlink](#)

Gene Summary: This gene encodes a member of the membrane-spanning 4A gene family. Members of this nascent protein family are characterized by common structural features and similar intron/exon splice boundaries and display unique expression patterns among hematopoietic cells and nonlymphoid tissues. This gene encodes a B-lymphocyte surface molecule which plays a role in the development and differentiation of B-cells into plasma cells. This family member is localized to 11q12, among a cluster of family members. Alternative splicing of this gene results in two transcript variants which encode the same protein. [provided by RefSeq]

Other Designations: B-lymphocyte cell-surface antigen B1,CD20 antigen,CD20 receptor

Gene Pathway

[Hematopoietic cell lineage](#)

Related Disease

[Breast cancer](#) [Breast Neoplasms](#) [Genetic Predisposition to Disease](#)
[Lymphoma, Large B-Cell, Diffuse](#) [Neoplasm Recurrence, Local](#) [Ovarian cancer](#)