



# SZABO SCANDIC

Part of Europa Biosite

## Produktinformation



Forschungsprodukte & Biochemikalien



Zellkultur & Verbrauchsmaterial



Diagnostik & molekulare Diagnostik



Laborgeräte & Service

Weitere Information auf den folgenden Seiten!  
See the following pages for more information!



### Lieferung & Zahlungsart

siehe unsere [Liefer- und Versandbedingungen](#)

### Zuschläge

- Mindermengenzuschlag
- Trockeneiszuschlag
- Gefahrgutzuschlag
- Expressversand

### SZABO-SCANDIC HandelsgmbH

Quellenstraße 110, A-1100 Wien

T. +43(0)1 489 3961-0

F. +43(0)1 489 3961-7

[mail@szabo-scandic.com](mailto:mail@szabo-scandic.com)

[www.szabo-scandic.com](http://www.szabo-scandic.com)

[linkedin.com/company/szaboscandic](https://www.linkedin.com/company/szaboscandic)

## CD28 monoclonal antibody (M21), clone 1D7

Catalog # : H00000940-M21

規格 : [ 100 ug ]

List All

### Specification

**Product Description:** Mouse monoclonal antibody raised against a partial recombinant CD28.

**Immunogen:** CD28 (NP\_006130.1, 18 a.a. ~ 152 a.a) partial recombinant protein with GST tag.

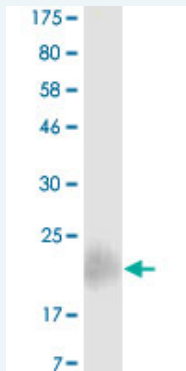
**Sequence:** GNKILVKQSPMLVAYDNAVNLSCKYSYNLFSREFRASLHKGLDSAVEV CV  
VYGNYSQQQLQVYSKTGFNCDGKLGNESVTFYLNLYVNQTDIYFCKIEV  
MYPPPYLDNEKSNGTIIHVKGKHLCPSPFLPGPSKP

**Host:** Mouse

**Reactivity:** Human

**Isotype:** IgG1 Kappa

**Quality Control Testing:** Antibody Reactive Against Recombinant Protein.



Western Blot detection against Immunogen (17.05 KDa) .

**Storage Buffer:** In 1x PBS, pH 7.4

**Storage Instruction:** Store at -20°C or lower. Aliquot to avoid repeated freezing and thawing.

**Datasheet:**  [Download](#)

### Applications

**Western Blot (Recombinant protein)**

 [Protocol Download](#)

**ELISA**

### Gene Information

**Entrez GeneID:** [940](#)

**GeneBank Accession#:** [NM\\_006139.3](#)

### Application Image

Western Blot (Recombinant protein)

ELISA

**Protein** [NP\\_006130.1](#)

**Accession#:**

**Gene Name:** CD28

**Gene Alias:** MGC138290, Tp44

**Gene Description:** CD28 molecule

**Omim ID:** [186760](#)

**Gene Ontology:** [Hyperlink](#)

**Gene Summary:** CD28 costimulation is essential for CD4 (MIM 186940)-positive T-cell proliferation, survival, interleukin-2 (IL2; MIM 147680) production, and T-helper type-2 (Th2) development.[supplied by OMIM]

**Other Designations:** CD28 antigen, CD28 antigen (Tp44), T-cell-specific surface glycoprotein

### Gene Pathway

[Allograft rejection](#) [Autoimmune thyroid disease](#) [Cell adhesion molecules \(CAMs\)](#)  
[Graft-versus-host disease](#) [Systemic lupus erythematosus](#) [T cell receptor signaling pathway](#)  
[Type I diabetes mellitus](#)

### Related Disease

[Acute Disease](#) [Arthritis, Rheumatoid](#) [Asthma](#) [Asthma](#) [Behcet Syndrome](#) [Bronchiolitis, Viral](#)  
[Carcinoma, Squamous Cell](#) [Celiac Disease](#) [Cholangitis, Sclerosing](#) [Colon cancer](#)  
[Colorectal Neoplasms](#) [Diabetes Mellitus, Type 1](#) [Disease Progression](#) [Drug Eruptions](#)  
[Genetic Predisposition to Disease](#) [Hematologic Diseases](#) [Hepatitis C](#) [Hodgkin Disease](#)  
[Hypersensitivity, Immediate](#)

... see more

[服務條款](#) | [隱私權政策](#) | [著作及商標](#) | [網站地圖](#)

©2016 亞諾法生技股份有限公司 Abnova Corporation. 版權所有.