



SZABO SCANDIC

Part of Europa Biosite

Produktinformation



Forschungsprodukte & Biochemikalien



Zellkultur & Verbrauchsmaterial



Diagnostik & molekulare Diagnostik



Laborgeräte & Service

Weitere Information auf den folgenden Seiten!
See the following pages for more information!



Lieferung & Zahlungsart

siehe unsere [Liefer- und Versandbedingungen](#)

Zuschläge

- Mindermengenzuschlag
- Trockeneiszuschlag
- Gefahrgutzuschlag
- Expressversand

SZABO-SCANDIC HandelsgmbH

Quellenstraße 110, A-1100 Wien

T. +43(0)1 489 3961-0

F. +43(0)1 489 3961-7

mail@szabo-scandic.com

www.szabo-scandic.com

[linkedin.com/company/szaboscandic](https://www.linkedin.com/company/szaboscandic) 

CD28 293T Cell Transient Overexpression Lysate(Denatured)

Catalog # : H00000940-T01

規格 : [100 uL]

[List All](#)

Specification

Transfected Cell Line: 293T

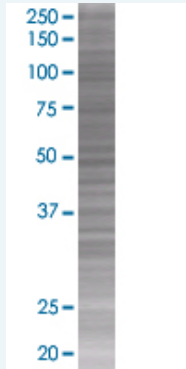
Plasmid: pCMV-CD28 full-length

Host: Human

Theoretical MW (kDa): 25.1

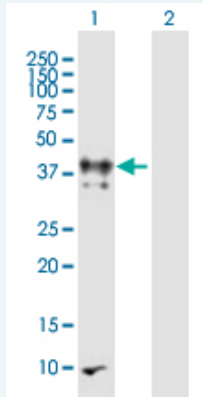
Quality Control Testing: Transient overexpression cell lysate was tested with Anti-CD28 antibody (H00000940-B01) by Western Blots.

SDS-PAGE Gel



CD28 transfected lysate

Western Blot



Lane 1: CD28 transfected lysate (25.1 KDa).

Lane 2: Non-transfected lysate.

Storage Buffer: 1X Sample Buffer (50 mM Tris-HCl, 2% SDS, 10% glycerol, 300 mM 2-mercaptoethanol, 0.01% Bromophenol blue)

Storage Instruction: Store at -80°C. Aliquot to avoid repeated freezing and thawing.

MSDS:  [Download](#)

Applications

Western Blot

Gene Information

Entrez GeneID: [940](#)

GeneBank Accession#: [NM_006139](#)

Protein Accession#: [NP_006130](#)

Gene Name: CD28

Gene Alias: MGC138290,Tp44

Gene Description: CD28 molecule

Omim ID: [186760](#)

Gene Ontology: [Hyperlink](#)

Gene Summary: CD28 costimulation is essential for CD4 (MIM 186940)-positive T-cell proliferation, survival, interleukin-2 (IL2; MIM 147680) production, and T-helper type-2 (Th2) development.[supplied by OMIM]

Other Designations: CD28 antigen,CD28 antigen (Tp44),T-cell-specific surface glycoprotein

Gene Pathway

[Allograft rejection](#) [Autoimmune thyroid disease](#) [Cell adhesion molecules \(CAMs\)](#) [Graft-versus-host disease](#) [Systemic lupus erythematosus](#) [T cell receptor signaling pathway](#) [Type I diabetes mellitus](#)

Related Disease

[Acute Disease](#) [Arthritis, Rheumatoid](#) [Asthma](#) [Asthma](#) [Behcet Syndrome](#) [Bronchiolitis, Viral](#) [Carcinoma, Squamous Cell](#) [Celiac Disease](#) [Cholangitis, Sclerosing](#) [Colon cancer](#) [Colorectal Neoplasms](#) [Diabetes Mellitus, Type 1](#) [Disease Progression](#) [Drug Eruptions](#) [Genetic Predisposition to Disease](#) [Hematologic Diseases](#) [Hepatitis C](#) [Hodgkin Disease](#) [Hypersensitivity, Immediate](#)

... see more