



SZABO SCANDIC

Part of Europa Biosite

Produktinformation



Forschungsprodukte & Biochemikalien



Zellkultur & Verbrauchsmaterial



Diagnostik & molekulare Diagnostik



Laborgeräte & Service

Weitere Information auf den folgenden Seiten!
See the following pages for more information!



Lieferung & Zahlungsart

siehe unsere [Liefer- und Versandbedingungen](#)

Zuschläge

- Mindermengenzuschlag
- Trockeneiszuschlag
- Gefahrgutzuschlag
- Expressversand

SZABO-SCANDIC HandelsgmbH

Quellenstraße 110, A-1100 Wien

T. +43(0)1 489 3961-0

F. +43(0)1 489 3961-7

mail@szabo-scandic.com

www.szabo-scandic.com

[linkedin.com/company/szaboscandic](https://www.linkedin.com/company/szaboscandic) 

CD80 monoclonal antibody (M01), clone 1G1

Catalog # : H00000941-M01

規格 : [100 ug]

[List All](#)

Specification

Product Description: Mouse monoclonal antibody raised against a full length recombinant CD80.

Immunogen: CD80 (AAH42665, 35 a.a. ~ 288 a.a) full-length recombinant protein with GST tag. MW of the GST tag alone is 26 KDa.

Sequence:
 VIHVTKEVKEVATLSCGHNVSVEELAQTRIWQKEKMMVLTMMSGDMNI
 WPEYKNRTIFDITNLSVILALRPSDEGTYESVVKYEKDAFKREHLAET
 LSVKADFPPTPSISDFEIPTSNIRRICSTSGGFPEPHLSWLENGEELNAINTT
 VSQDPETELYAVSSKLDNFNMTTNHSFMCLIKYGHLRVNQTFNWNTTKQE
 HFDPDLLPSWAITLISVNGIFVICCLTYCFAPRCRERRRNERLRRESVRPV

Host: Mouse

Reactivity: Human

Isotype: IgG1 Kappa

Quality Control Testing: Antibody Reactive Against Recombinant Protein.

Storage Buffer: In 1x PBS, pH 7.4

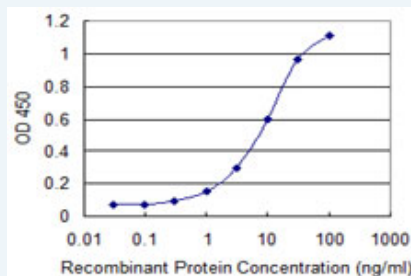
Storage Instruction: Store at -20°C or lower. Aliquot to avoid repeated freezing and thawing.

MSDS: [Download](#)

Datasheet: [Download](#)

Applications

Sandwich ELISA (Recombinant protein)



Detection limit for recombinant GST tagged CD80 is 0.3 ng/ml as a capture antibody.

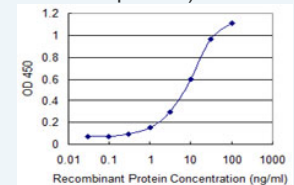
[Protocol Download](#)

ELISA

In situ Proximity Ligation Assay (Cell)

Application Image

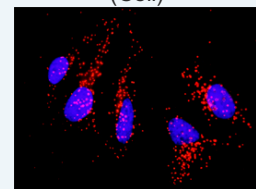
Sandwich ELISA (Recombinant protein)



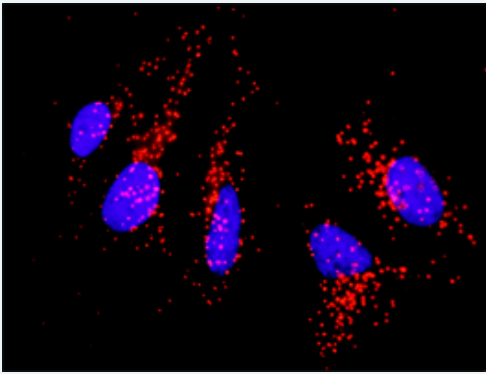
[enlarge](#)

ELISA

In situ Proximity Ligation Assay (Cell)



[enlarge](#)



Proximity Ligation Analysis of protein-protein interactions between CD86 and CD80. HeLa cells were stained with anti-CD86 rabbit purified polyclonal 1:1200 and anti-CD80 mouse monoclonal antibody 1:50. Each red dot represents the detection of protein-protein interaction complex, and nuclei were counterstained with DAPI (blue).

Gene Information

Entrez GeneID: [941](#)

**GeneBank
Accession#:** [BC042665](#)

**Protein
Accession#:** [AAH42665](#)

Gene Name: CD80

Gene Alias: CD28LG,CD28LG1,LAB7

**Gene
Description:** CD80 molecule

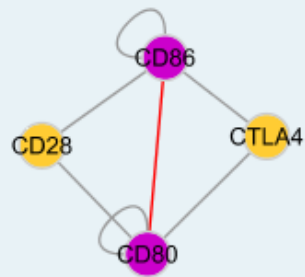
Omim ID: [112203](#)

Gene Ontology: [Hyperlink](#)

Gene Summary: The B-lymphocyte activation antigen B7-1 (formerly referred to as B7) provides regulatory signals for T lymphocytes as a consequence of binding to the CD28 (MIM 186760) and CTLA4 (MIM 123890) ligands of T cells.[supplied by OMIM]

**Other
Designations:** B-lymphocyte activation antigen B7,CD80 antigen,CD80 antigen (CD28 antigen ligand 1, B7-1 antigen),costimulatory factor CD80,costimulatory molecule variant IgV-CD80

Interactome



Gene Pathway

[Allograft rejection](#) [Autoimmune thyroid disease](#) [Cell adhesion molecules \(CAMs\)](#)
[Graft-versus-host disease](#) [Systemic lupus erythematosus](#)
[Toll-like receptor signaling pathway](#) [Type I diabetes mellitus](#)

Related Disease

[Arthritis, Rheumatoid](#) [Asthma](#) [Asthma Bronchiolitis, Viral](#) [Carcinoma, Hepatocellular](#)
[Celiac Disease](#) [Disease Progression](#) [Genetic Predisposition to Disease](#) [Hepatitis C](#)
[Infant, Premature, Diseases](#) [Liver Neoplasms](#) [Lung Neoplasms](#)
[Lupus Erythematosus, Systemic](#) [Multiple Sclerosis](#) [Papillomavirus Infections](#)
[Pulmonary Disease, Chronic Obstructive Respiratory](#) [Syncytial Virus Infections](#) [Sarcoidosis](#)
[Urinary Bladder Neoplasms](#)

... see more

[服務條款](#) | [隱私權政策](#) | [著作及商標](#) | [網站地圖](#)

©2016 亞諾法生技股份有限公司 Abnova Corporation. 版權所有.