



# SZABO SCANDIC

Part of Europa Biosite

## Produktinformation



Forschungsprodukte & Biochemikalien



Zellkultur & Verbrauchsmaterial



Diagnostik & molekulare Diagnostik



Laborgeräte & Service

Weitere Information auf den folgenden Seiten!  
See the following pages for more information!



### Lieferung & Zahlungsart

siehe unsere [Liefer- und Versandbedingungen](#)

### Zuschläge

- Mindermengenzuschlag
- Trockeneiszuschlag
- Gefahrgutzuschlag
- Expressversand

### SZABO-SCANDIC HandelsgmbH

Quellenstraße 110, A-1100 Wien

T. +43(0)1 489 3961-0

F. +43(0)1 489 3961-7

[mail@szabo-scandic.com](mailto:mail@szabo-scandic.com)

[www.szabo-scandic.com](http://www.szabo-scandic.com)

[linkedin.com/company/szaboscandic](https://www.linkedin.com/company/szaboscandic) 

## CD86 (Human) Matched Antibody Pair

Catalog # : H00000942-AP41

規格 : [ 1 Set ]

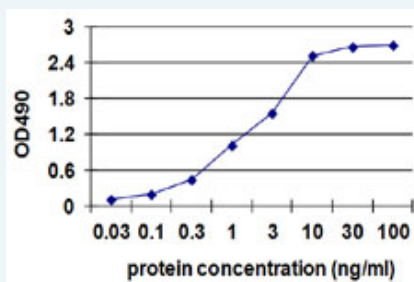
[List All](#)

### Specification

**Product Description:** This antibody pair set comes with matched antibody pair to detect and quantify protein level of human CD86.

**Reactivity:** Human

**Quality Control Testing:** Standard curve using recombinant protein ( H00000942-Q02 ) as an analyte.



Sandwich ELISA detection sensitivity ranging from 0.03 ng/ml to 100 ng/ml.

**Supplied Product:** Antibody pair set content:  
 1. Capture antibody: mouse monoclonal anti-CD86, IgG1 Kappa (100 ug)  
 2. Detection antibody: biotinylated mouse monoclonal anti-CD86, IgG1 Kappa (50 ug)  
 \*Reagents are sufficient for at least 3-5 x 96 well plates using recommended protocols.

**Storage Instruction:** Store reagents of the antibody pair set at -20°C or lower. Please aliquot to avoid repeated freeze thaw cycle. Reagents should be returned to -20°C storage immediately after use.

**MSDS:**  [Download](#)

### Applications

ELISA Pair (Recombinant protein)

 [Protocol Download](#)

### Gene Information

**Entrez GeneID:** [942](#)

**Gene Name:** CD86

**Gene Alias:** B7-2,B70,CD28LG2,LAB72,MGC34413

**Gene Description:** CD86 molecule

**Omim ID:** [601020](#)

**Gene Ontology:** [Hyperlink](#)

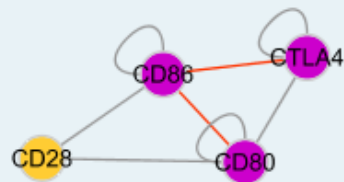
### Application Image

ELISA Pair (Recombinant protein)

**Gene Summary:** This gene encodes a type I membrane protein that is a member of the immunoglobulin superfamily. This protein is expressed by antigen-presenting cells, and it is the ligand for two proteins at the cell surface of T cells, CD28 antigen and cytotoxic T-lymphocyte-associated protein 4. Binding of this protein with CD28 antigen is a costimulatory signal for activation of the T-cell. Binding of this protein with cytotoxic T-lymphocyte-associated protein 4 negatively regulates T-cell activation and diminishes the immune response. Alternative splicing results in two transcript variants encoding different isoforms. Additional transcript variants have been described, but their full-length sequences have not been determined. [provided by RefSeq]

**Other Designations:** B-lymphocyte activation antigen B7-2,B7-2 antigen,CD28 antigen ligand 2,CD86 antigen,CD86 antigen (CD28 antigen ligand 2, B7-2 antigen),CTLA-4 counter-receptor B7.2

### Interactome



### Gene Pathway

[Allograft rejection](#) [Autoimmune thyroid disease](#) [Cell adhesion molecules \(CAMs\)](#)  
[Graft-versus-host disease](#) [Systemic lupus erythematosus](#)  
[Toll-like receptor signaling pathway](#) [Type I diabetes mellitus](#)

### Related Disease

[Acute Disease](#) [Arthritis, Rheumatoid](#) [Asthma](#) [Asthma](#) [Atherosclerosis](#) [Atherosclerosis](#)  
[Bronchiolitis, Viral](#) [Cardiovascular Diseases](#) [Chronic Disease](#) [Colorectal Neoplasms](#)  
[Coronary Artery Disease](#) [Diabetes Mellitus, Type 2](#) [Disease Progression](#) [Drug Eruptions](#)  
[Edema](#) [Genetic Predisposition to Disease](#) [Hepatitis B](#) [Hepatitis C](#) [Hypersensitivity](#)

... see more