



SZABO SCANDIC

Part of Europa Biosite

Produktinformation



Forschungsprodukte & Biochemikalien



Zellkultur & Verbrauchsmaterial



Diagnostik & molekulare Diagnostik



Laborgeräte & Service

Weitere Information auf den folgenden Seiten!
See the following pages for more information!



Lieferung & Zahlungsart

siehe unsere [Liefer- und Versandbedingungen](#)

Zuschläge

- Mindermengenzuschlag
- Trockeneiszuschlag
- Gefahrgutzuschlag
- Expressversand

SZABO-SCANDIC HandelsgmbH

Quellenstraße 110, A-1100 Wien

T. +43(0)1 489 3961-0

F. +43(0)1 489 3961-7

mail@szabo-scandic.com

www.szabo-scandic.com

[linkedin.com/company/szaboscandic](https://www.linkedin.com/company/szaboscandic) 

CD86 purified MaxPab mouse polyclonal antibody (B01P) MaxPab®

Catalog # : H00000942-B01P

規格 : [50 ug]

[List All](#)

Specification

Product Description: Mouse polyclonal antibody raised against a full-length human CD86 protein.

Immunogen: CD86 (AAH40261.1, 1 a.a. ~ 329 a.a) full-length human protein.

Sequence:
 MDPQCTMGLSNILFVMAFLLSGAAPLKIQAYFNETADLPCQFANSQSQS
 LSELVWFVWDQENLVNEVYLGKEKFDVSHSKYMGRTSFDSDSWTLRL
 HNLQIKDKGLYQCIIHKKPTGMIRIHQMNSELSVLANFSQPEIVPISNITENV
 YINLTCSSIHGYPEPKMSVLLRRTKNSTIEYDGIMQKSQDNVTELYDVSISL
 SVSFPDVTSNMTIFCILETDKTRLLSSPFSIELEDPPDPHWPITAVLPT
 VIICVMVFCLILWKWKKKRPRNSYKCGTNTMERESEQTKKREKIHIPER
 SDETQRVFKSSKTSKCDKSDTCF

Host: Mouse

Reactivity: Human

Quality Control Testing: Antibody reactive against mammalian transfected lysate.

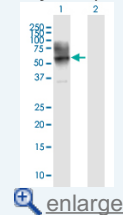
Storage Buffer: In 1x PBS, pH 7.4


Storage Instruction: Store at -20°C or lower. Aliquot to avoid repeated freezing and thawing.

Datasheet:  [Download](#)

Application Image

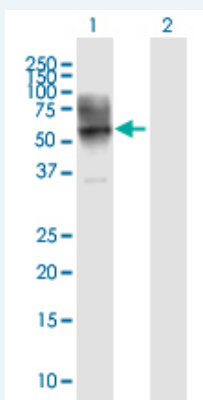
Western Blot (Transfected lysate)



 [enlarge](#)

Applications

Western Blot (Transfected lysate)



Western Blot analysis of CD86 expression in transfected 293T cell line ([H00000942-T01](#)) by CD86 MaxPab polyclonal antibody.

Lane 1: CD86 transfected lysate(36.19 KDa).

Lane 2: Non-transfected lysate.

 [Protocol Download](#)

Gene Information

Entrez GeneID: [942](#)

GeneBank [BC040261.1](#)

Accession#:

Protein [AAH40261.1](#)

Accession#:

Gene Name: CD86

Gene Alias: B7-2,B70,CD28LG2,LAB72,MGC34413

Gene Description: CD86 molecule

Description:

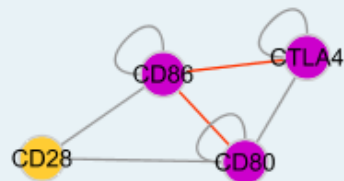
Omim ID: [601020](#)

Gene Ontology: [Hyperlink](#)

Gene Summary: This gene encodes a type I membrane protein that is a member of the immunoglobulin superfamily. This protein is expressed by antigen-presenting cells, and it is the ligand for two proteins at the cell surface of T cells, CD28 antigen and cytotoxic T-lymphocyte-associated protein 4. Binding of this protein with CD28 antigen is a costimulatory signal for activation of the T-cell. Binding of this protein with cytotoxic T-lymphocyte-associated protein 4 negatively regulates T-cell activation and diminishes the immune response. Alternative splicing results in two transcript variants encoding different isoforms. Additional transcript variants have been described, but their full-length sequences have not been determined. [provided by RefSeq]

Other Designations: B-lymphocyte activation antigen B7-2,B7-2 antigen,CD28 antigen ligand 2,CD86 antigen,CD86 antigen (CD28 antigen ligand 2, B7-2 antigen),CTLA-4 counter-receptor B7.2

Interactome



Gene Pathway

[Allograft rejection](#) [Autoimmune thyroid disease](#) [Cell adhesion molecules \(CAMs\)](#)
[Graft-versus-host disease](#) [Systemic lupus erythematosus](#)
[Toll-like receptor signaling pathway](#) [Type I diabetes mellitus](#)

Related Disease

[Acute Disease](#) [Arthritis, Rheumatoid](#) [Asthma](#) [Asthma](#) [Atherosclerosis](#) [Atherosclerosis](#)
[Bronchiolitis, Viral](#) [Cardiovascular Diseases](#) [Chronic Disease](#) [Colorectal Neoplasms](#)
[Coronary Artery Disease](#) [Diabetes Mellitus, Type 2](#) [Disease Progression](#) [Drug Eruptions](#)
[Edema](#) [Genetic Predisposition to Disease](#) [Hepatitis B](#) [Hepatitis C](#) [Hypersensitivity](#)

... see more

[服務條款](#) | [隱私權政策](#) | [著作及商標](#) | [網站地圖](#)

©2016 亞諾法生技股份有限公司 Abnova Corporation. 版權所有.