



# SZABO SCANDIC

Part of Europa Biosite

## Produktinformation



Forschungsprodukte & Biochemikalien



Zellkultur & Verbrauchsmaterial



Diagnostik & molekulare Diagnostik



Laborgeräte & Service

Weitere Information auf den folgenden Seiten!  
See the following pages for more information!



### Lieferung & Zahlungsart

siehe unsere [Liefer- und Versandbedingungen](#)

### Zuschläge

- Mindermengenzuschlag
- Trockeneiszuschlag
- Gefahrgutzuschlag
- Expressversand

### SZABO-SCANDIC HandelsgmbH

Quellenstraße 110, A-1100 Wien

T. +43(0)1 489 3961-0

F. +43(0)1 489 3961-7

[mail@szabo-scandic.com](mailto:mail@szabo-scandic.com)

[www.szabo-scandic.com](http://www.szabo-scandic.com)

[linkedin.com/company/szaboscandic](https://www.linkedin.com/company/szaboscandic) 

# SIGLEC6 MaxPab mouse polyclonal antibody (B01) MaxPab®

Catalog # : H00000946-B01

規格 : [ 50 uL ]

[List All](#)

## Specification

**Product Description:** Mouse polyclonal antibody raised against a full-length human SIGLEC6 protein.

**Immunogen:** SIGLEC6 (ENSP00000344064, 1 a.a. ~ 437 a.a) full-length human protein.

**Sequence:** MQGAQEASASEMLPLLLPLLWAGALAQERRFQLEGPESLTVQEGLCVL VPCRLPTTLPASYYGYGWYFLEGADVPVATNDPDEEVQEETRGRFHLL WDP RRKNC SL SIRDARRRDNAA YFFRLKSKWMMKYGYTSSKLSVRVMAL THRPNISIPGTLESGHPSNLTCSVPWWCEQGTPIFSWMSAAPTSLGPRT TQSSVLITIPRPQDHSTNLTQVTFPGAGVTMERTIQLNVSSFKILQNTS SLPVLEGQALRLLCDADGNPPAHL SWFQGFALNATPISNTGVLELPQV GSAEEGDFTCRAQHPLGSLQISLSLFVHWKPEGRAGGVLGAVWGASIT TLVFLCVCFIFRVKTRRKKAAQPVQNTDDVNPVMVSGSRGHQHGFQTGI VSDHPAEAGPISEDEQELHYAVLHFHKVQPQEPKVTDEYSEIKIHK

**Host:** Mouse

**Reactivity:** Human

**Quality Control Testing:** Antibody reactive against mammalian transfected lysate.

**Storage Buffer:** No additive

**Storage Instruction:** Store at -20°C or lower. Aliquot to avoid repeated freezing and thawing.

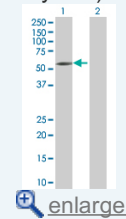
**Note:** For IHC and IF applications, antibody purification with Protein A will be needed prior to use.

**MSDS:** [Download](#)

**Datasheet:** [Download](#)

## Application Image

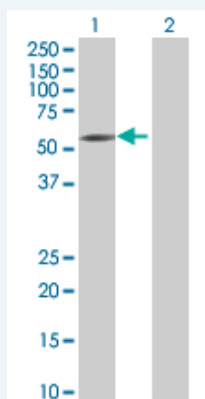
Western Blot (Transfected lysate)



[enlarge](#)

## Applications

### Western Blot (Transfected lysate)



Western Blot analysis of SIGLEC6 expression in transfected 293T cell line (H00000946-T01) by SIGLEC6 MaxPab polyclonal antibody.

Lane 1: SIGLEC6 transfected lysate(48.07 KDa).  
Lane 2: Non-transfected lysate.

 [Protocol Download](#)

---

### Gene Information

---

**Entrez GeneID:** [946](#)

---

**GeneBank  
Accession#:** [ENST00000346477](#)

---

**Protein  
Accession#:** [ENSP00000344064](#)

---

**Gene Name:** SIGLEC6

---

**Gene Alias:** CD327,CD33L,CD33L1,CDw327,OBBP1,SIGLEC-6

---

**Gene  
Description:** sialic acid binding Ig-like lectin 6

---

**Omim ID:** [604405](#)

---

**Gene Ontology:** [Hyperlink](#)

---

**Other  
Designations:** CD33 antigen-like 1,CDw327  
antigen,OTTHUMP00000164940,OTTHUMP00000164941,OTTHUMP0000164942,Obesity-binding protein 1

---

---

[服務條款](#) | [隱私權政策](#) | [著作及商標](#) | [網站地圖](#)

©2016 亞諾法生技股份有限公司 Abnova Corporation. 版權所有.