



SZABO SCANDIC

Part of Europa Biosite

Produktinformation



Forschungsprodukte & Biochemikalien



Zellkultur & Verbrauchsmaterial



Diagnostik & molekulare Diagnostik



Laborgeräte & Service

Weitere Information auf den folgenden Seiten!
See the following pages for more information!



Lieferung & Zahlungsart

siehe unsere [Liefer- und Versandbedingungen](#)

Zuschläge

- Mindermengenzuschlag
- Trockeneiszuschlag
- Gefahrgutzuschlag
- Expressversand

SZABO-SCANDIC HandelsgmbH

Quellenstraße 110, A-1100 Wien

T. +43(0)1 489 3961-0

F. +43(0)1 489 3961-7

mail@szabo-scandic.com

www.szabo-scandic.com

[linkedin.com/company/szaboscandic](https://www.linkedin.com/company/szaboscandic) 

SIGLEC6 purified MaxPab rabbit polyclonal antibody (D01P) MaxPab®

Catalog # : H00000946-D01P

規格 : [100 ug]

[List All](#)

Specification

Product Description: Rabbit polyclonal antibody raised against a full-length human SIGLEC6 protein.

Immunogen: SIGLEC6 (ENSP00000344064, 1 a.a. ~ 437 a.a) full-length human protein.

Sequence: MQGAQEASASEMLPLLLPLLWAGALAQERRFQLEGPESLTVQEGLCVL VPCRLPTTLPASYYGYGYWFLEGADVPVATNDPDEEVQEETRGRFHLL WDP RRKNC SL SIRDARRRDNAA YFFRLKSKWMMKYGYTSSKLSVRVMAL THRPNISIPGTLESGHPSNLTCSVPWWCEQGTPIFSWMSAAPTSLGPRT TQSSVLITPRPQDHTNLT CQVTFPGAGVTMERTIQLNVSSFKILQNTS SLPVLEGQALRLLCDADGNPPAHL SWFQGFALNATPISNTGVLELPQV GSAEEGDFTCRAQHPLGSLQISLSLFVHWKPEGRAGGVLGAVWGASIT TLVFLCVCVIFR.VKTRRKAAQPVQNTDDVNPVMVSGSRGHQH.QFTGI VSDHPAEAGPISEDEQELHYAVLHFHKVQPQEPKVTDT EYSEIKIHK

Host: Rabbit

Reactivity: Human

Quality Control Testing: Antibody reactive against mammalian transfected lysate.

Storage Buffer: In 1x PBS, pH 7.4

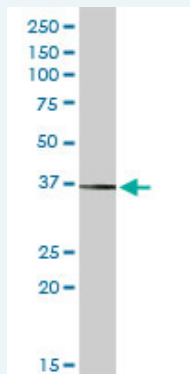
Storage Instruction: Store at -20°C or lower. Aliquot to avoid repeated freezing and thawing.

MSDS:  [Download](#)

Datasheet:  [Download](#)

Applications

Western Blot (Cell lysate)

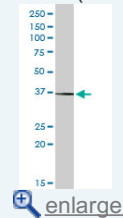


SIGLEC6 MaxPab rabbit polyclonal antibody. Western Blot analysis of SIGLEC6 expression in A-431.

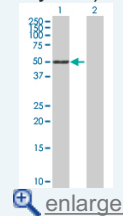
 [Protocol Download](#)

Application Image

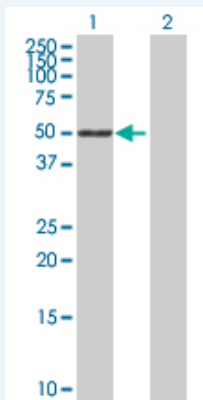
Western Blot (Cell lysate)



Western Blot (Transfected lysate)



Western Blot (Transfected lysate)



Western Blot analysis of SIGLEC6 expression in transfected 293T cell line ([H00000946-T01](#)) by SIGLEC6 MaxPab polyclonal antibody.

Lane 1: SIGLEC6 transfected lysate(48.30 kDa).

Lane 2: Non-transfected lysate.

 [Protocol Download](#)

Gene Information

Entrez GeneID: [946](#)

GeneBank [ENST00000346477](#)

Accession#:

Protein [ENSP00000344064](#)

Accession#:

Gene Name: SIGLEC6

Gene Alias: CD327,CD33L,CD33L1,CDw327,OBBP1,SIGLEC-6

Gene sialic acid binding Ig-like lectin 6

Description:

Omim ID: [604405](#)

Gene Ontology: [Hyperlink](#)

Other CD33 antigen-like 1,CDw327

Designations: antigen,OTTHUMP00000164940,OTTHUMP00000164941,OTTHUMP0000164942,Obesity-binding protein 1

[服務條款](#) | [隱私權政策](#) | [著作及商標](#) | [網站地圖](#)

©2016 亞諾法生技股份有限公司 Abnova Corporation. 版權所有.